

National Spatial Data Infrastructure

# **Content Standard for Digital Geospatial Metadata Workbook**

(For use with FGDC-STD-001-1998)

**Version 2.0**

**Federal Geographic Data Committee**

**May 1, 2000**

---

Federal Geographic Data Committee

Department of Agriculture • Department of Commerce • Department of Defense • Department of Energy  
Department of Health & Human Services • Department of Housing and Urban Development  
Department of the Interior • Department of Justice • Department of State  
Department of Transportation • Environmental Protection Agency  
Federal Emergency Management Agency • Library of Congress  
National Aeronautics and Space Administration • National Archives and Records Administration  
National Science Foundation • Tennessee Valley Authority

# Metadata

Metadata — describe the content, quality, condition, and other characteristics of data.

## Major uses of metadata:

- organize and maintain an organization's investment in data.
- provide information to data catalogs and clearinghouses.
- provide information to aid data transfer.



*Definition:* Metadata are "data about data" They describe the content, quality, condition, and other characteristics of data. Metadata help a person to locate and understand data.

### *Major uses of metadata:*

*Organize and maintain and organization's investment in data.* Metadata help insure an organization's investment in data. As personnel change or time passes, information about an organization's data will be lost and the data may lose their value. Later workers may have little understanding of the content and uses for a digital data base and may find that they can't trust results generated from these data. Complete metadata descriptions of the content and accuracy of a geospatial data set will encourage appropriate use of the data. Such descriptions also may provide some protection for the producing organization if conflicts arise over the misuse of data.

*Provide information to data catalogs and clearinghouses.* Applications of geographic information systems often require many themes of data. Few organizations can afford to create all data they need. Often data created by an organization also may be useful to others. By making metadata available through data catalogs and clearinghouses, organizations can find data to use, partners to share data collection and maintenance efforts, and customers for their data. The FGDC is sponsoring the development of the National Geospatial Data Clearinghouse through which data producers can provide metadata to others using the Internet.

*Provide information to aid data transfer.* Metadata should accompany the transfer of a data set. The metadata will aid the organization receiving the data process and interpret data, incorporate data into its holdings, and update internal catalogs describing its data holdings.

## Examples of Metadata

### Identification

Title? Area covered? Themes? Currentness? Restrictions?

### Data Quality

Accuracy? Completeness? Logical Consistency? Lineage?

### Spatial Data Organization

Indirect? Vector? Raster? Type of elements? Number?

### Spatial Reference

Projection? Grid system? Datum? Coordinate system?

### Entity and Attribute Information

Features? Attributes? Attribute values?

### Distribution

Distributor? Formats? Media? Online? Price?

### Metadata Reference

Metadata currentness? Responsible party?



Metadata describe different aspect of data, including:

*Identification* -- What is the name of the data set? Who developed the data set? What geographic area does it cover? What themes of information does it include? How current are the data? Are there restrictions on accessing or using the data?

*Data Quality* -- How good are the data? Is information available that allows a user to decide if the data are suitable for his or her purpose? What is the positional and attribute accuracy? Are the data complete? Were the consistency of the data verified? What data were used to create the data set, and what processes were applied to these sources?

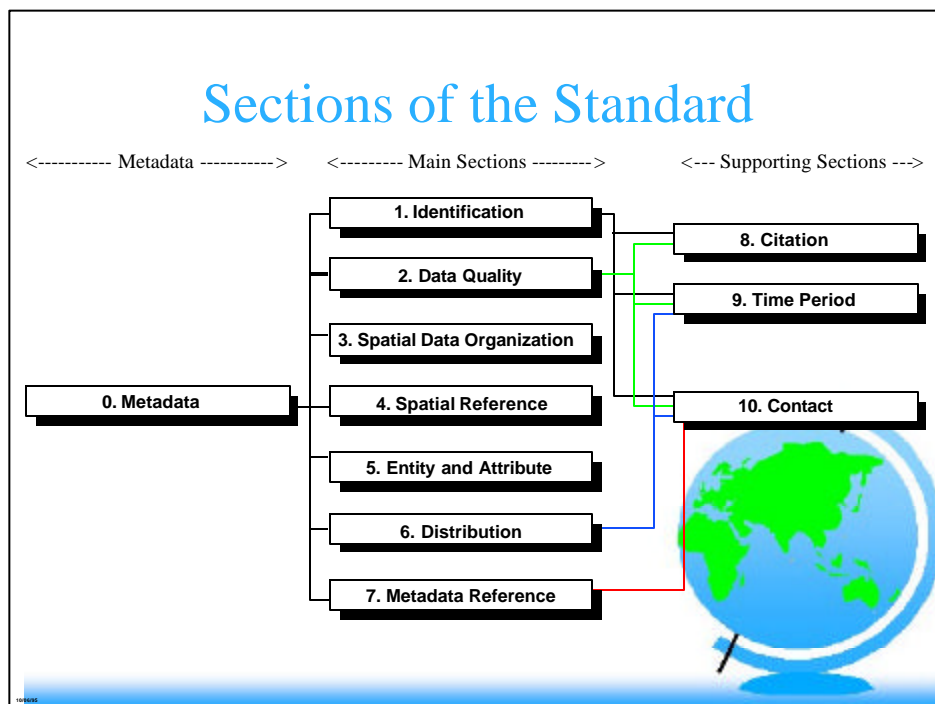
*Spatial Data Organization* -- What spatial data model was used to encode the spatial data? How many spatial objects are there? Are methods other than coordinates, such as street addresses, used to encode locations?

*Spatial Reference* -- Are coordinate locations encoded using longitude and latitude? Is a map projection or grid system, such as the State Plane Coordinate System, used? What horizontal and vertical datums are used? What parameters should be used to convert the data to another coordinate system?

*Entity and Attribute Information* -- What geographic information (roads, houses, elevation, temperature, etc.) is included? How is this information encoded? Were codes used? What do the codes mean?

*Distribution* -- From whom can I obtain the data? What formats are available? What media are available? Are the data available online? What is the price of the data?

*Metadata Reference* -- When were the metadata compiled? By whom?



The standard has 11 sections numbered 0 through 10.

Section 0, "Metadata," provides the starting point. It is composed of the main sections of the standard.

Sections 1 through 7 are the main sections of the standard.

Sections 8 through 10 support other sections. They provide a common method to define citation, temporal, and contact information. These sections are never used alone.

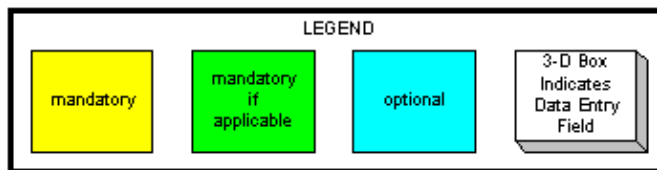
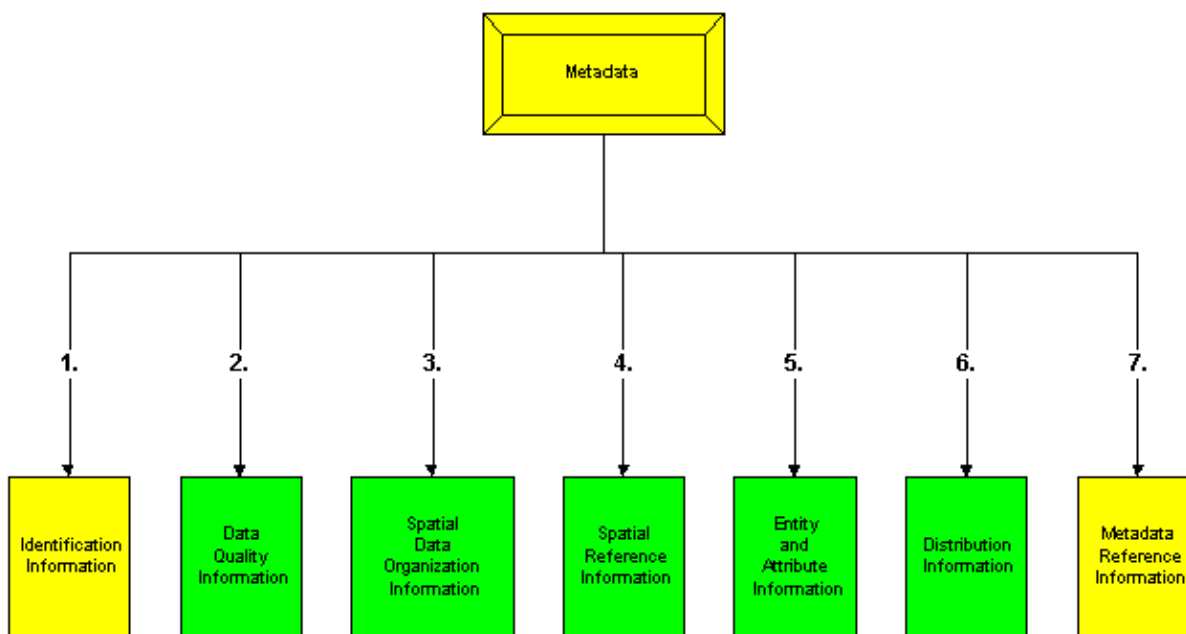
# Graphical Representation of: The Federal Geographic Data Committee's Content Standards for Digital Geospatial Metadata

FGDC-STD-001-1998

June 1998 Version

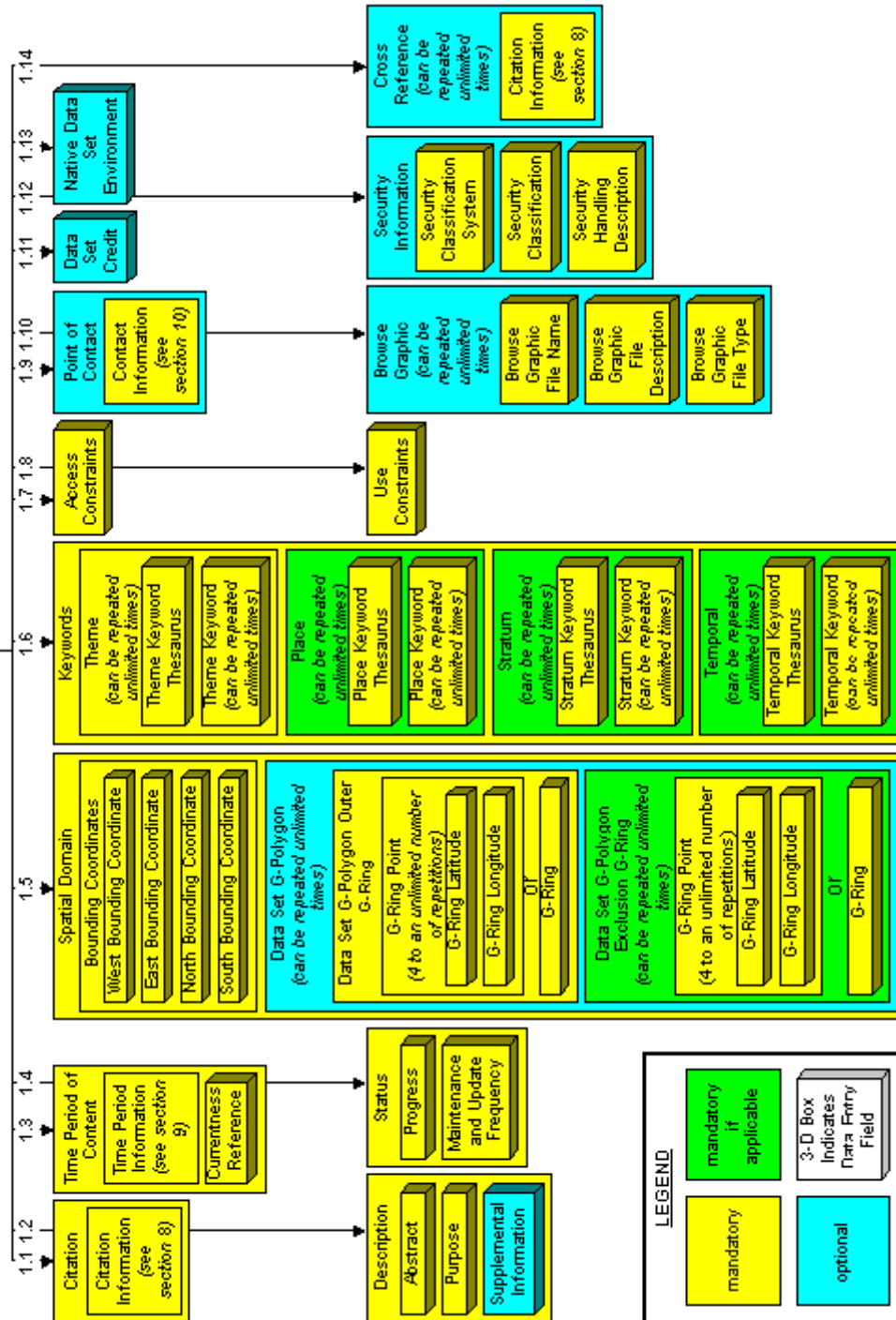
Prepared by Susan Stitt  
Technology Transfer Center  
National Biological Information Infrastructure

In Conjunction with the FGDC Standards Working Group



## Section 1

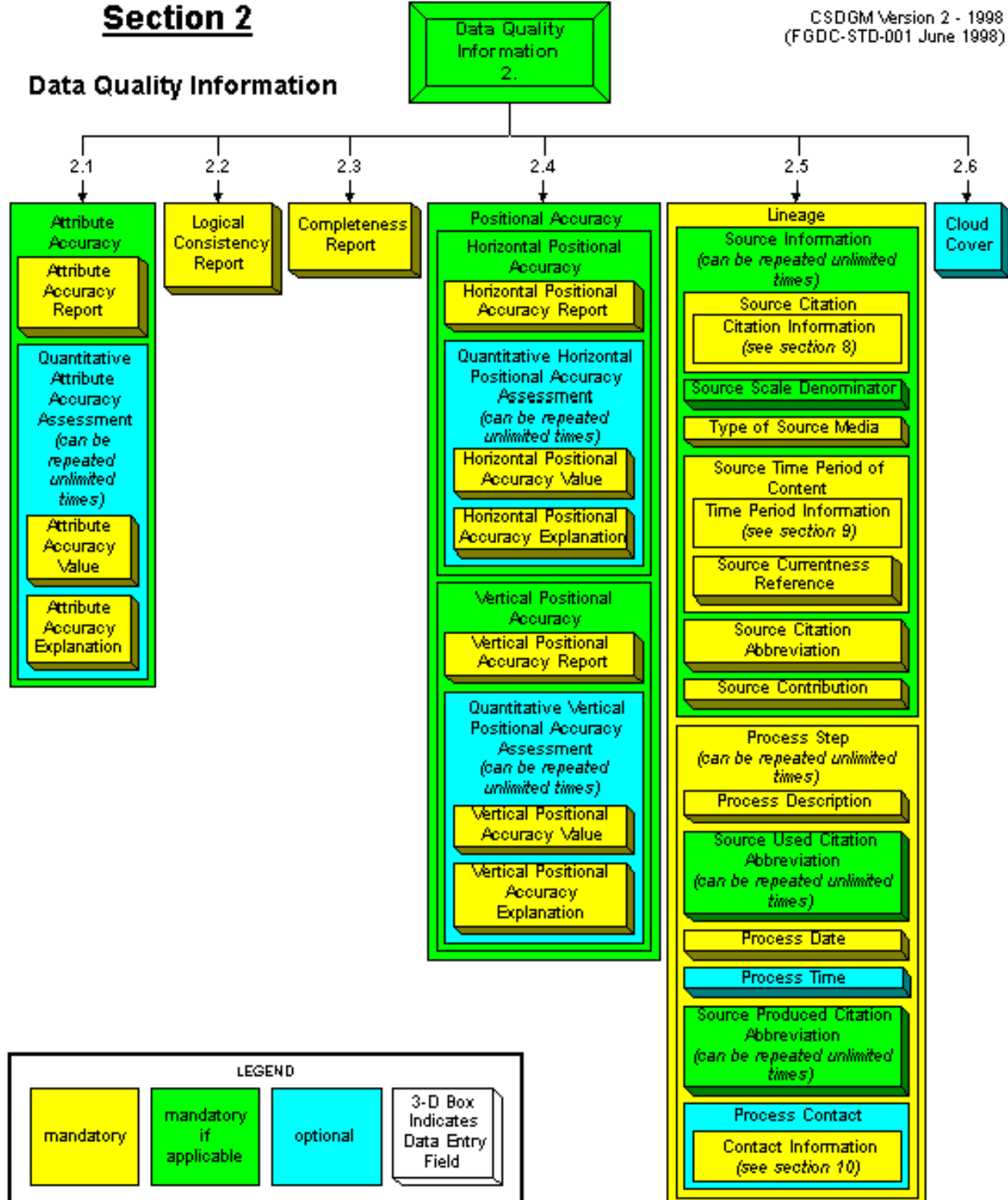
### Identification Information



## Section 2

CSDGM Version 2 - 1998  
(FGDC-STD-001 June 1998)

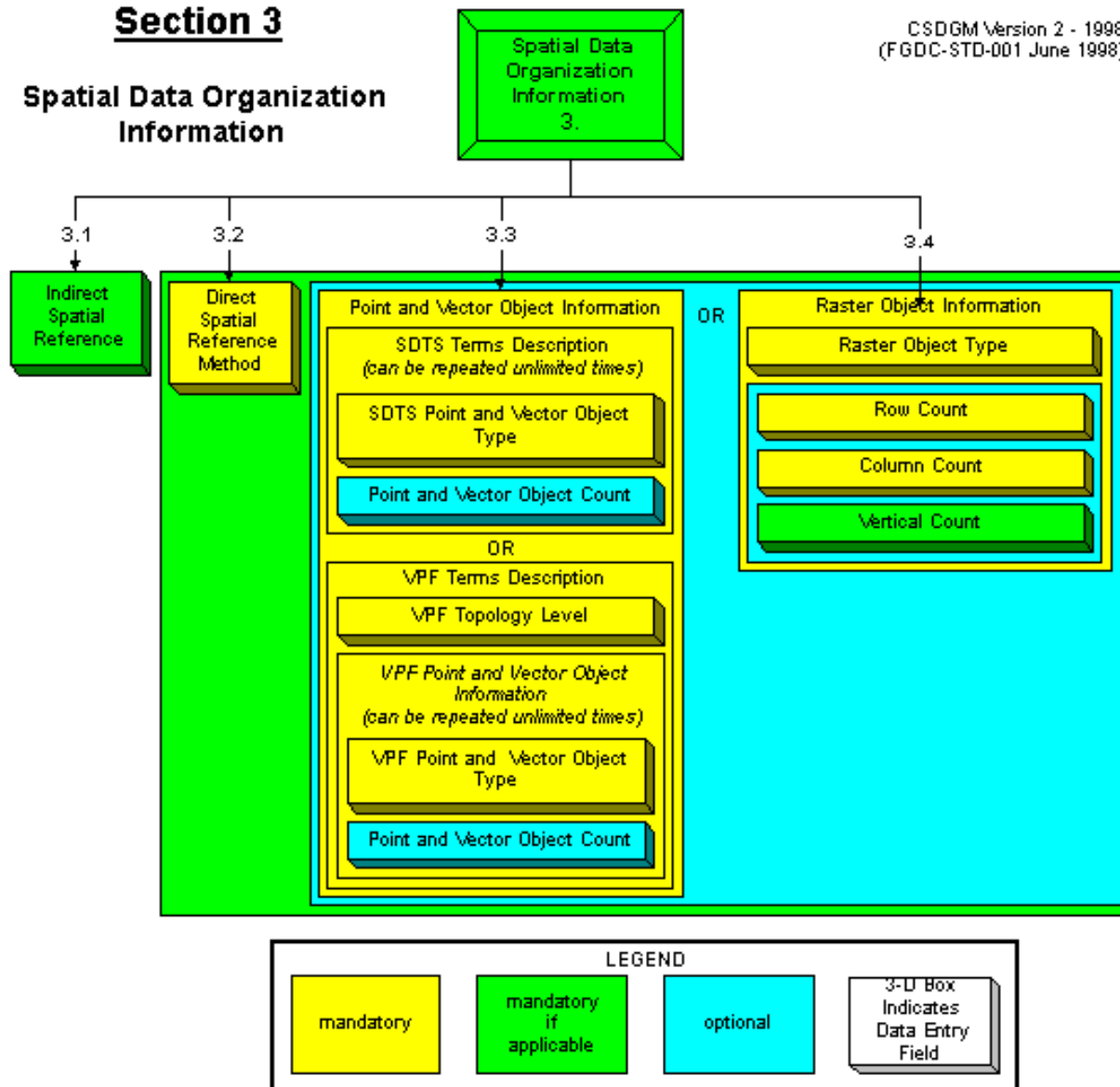
### Data Quality Information



## Section 3

### Spatial Data Organization Information

CSDGM Version 2 - 1998  
(FGDC-STD-001 June 1998)

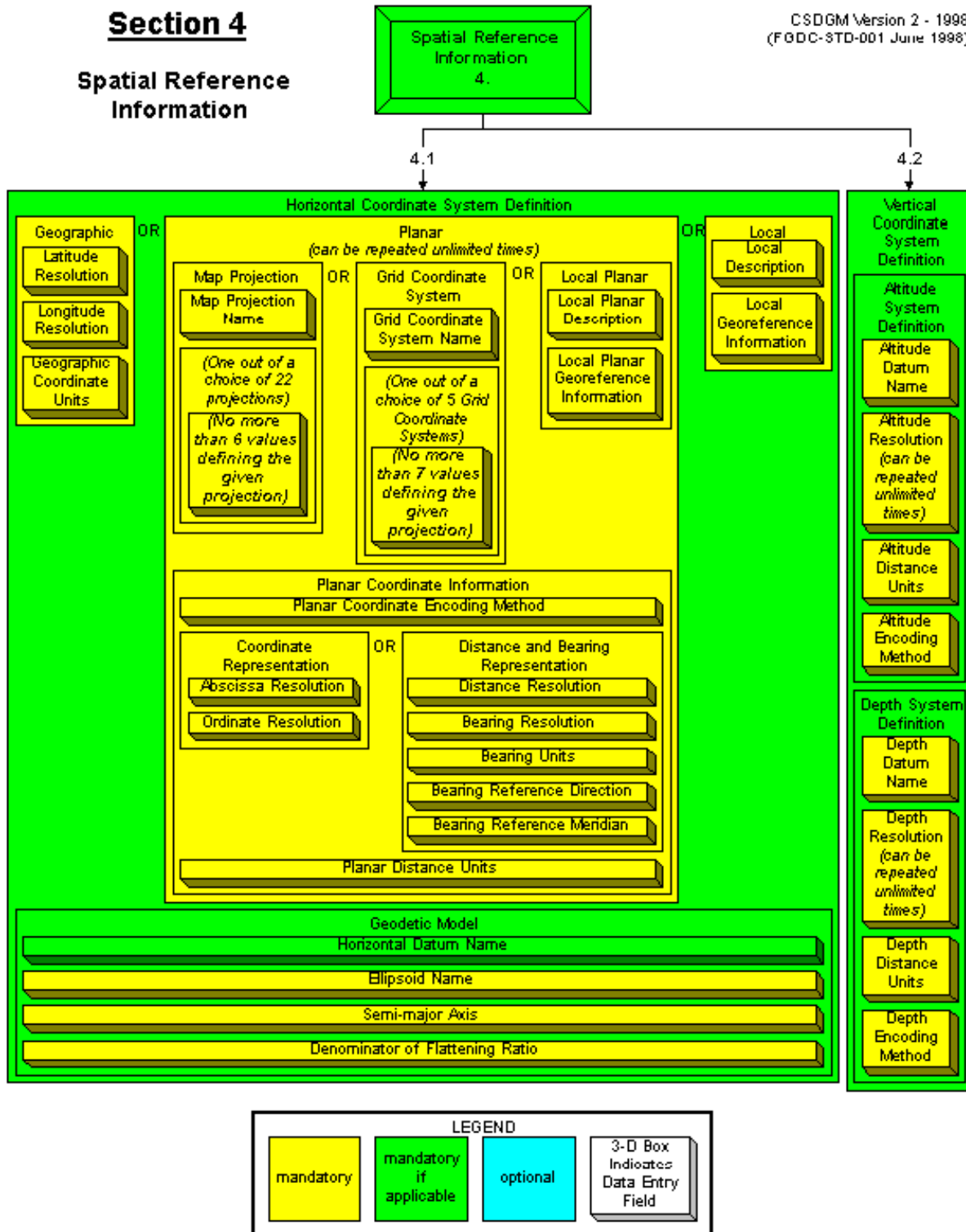




## Section 4

### Spatial Reference Information

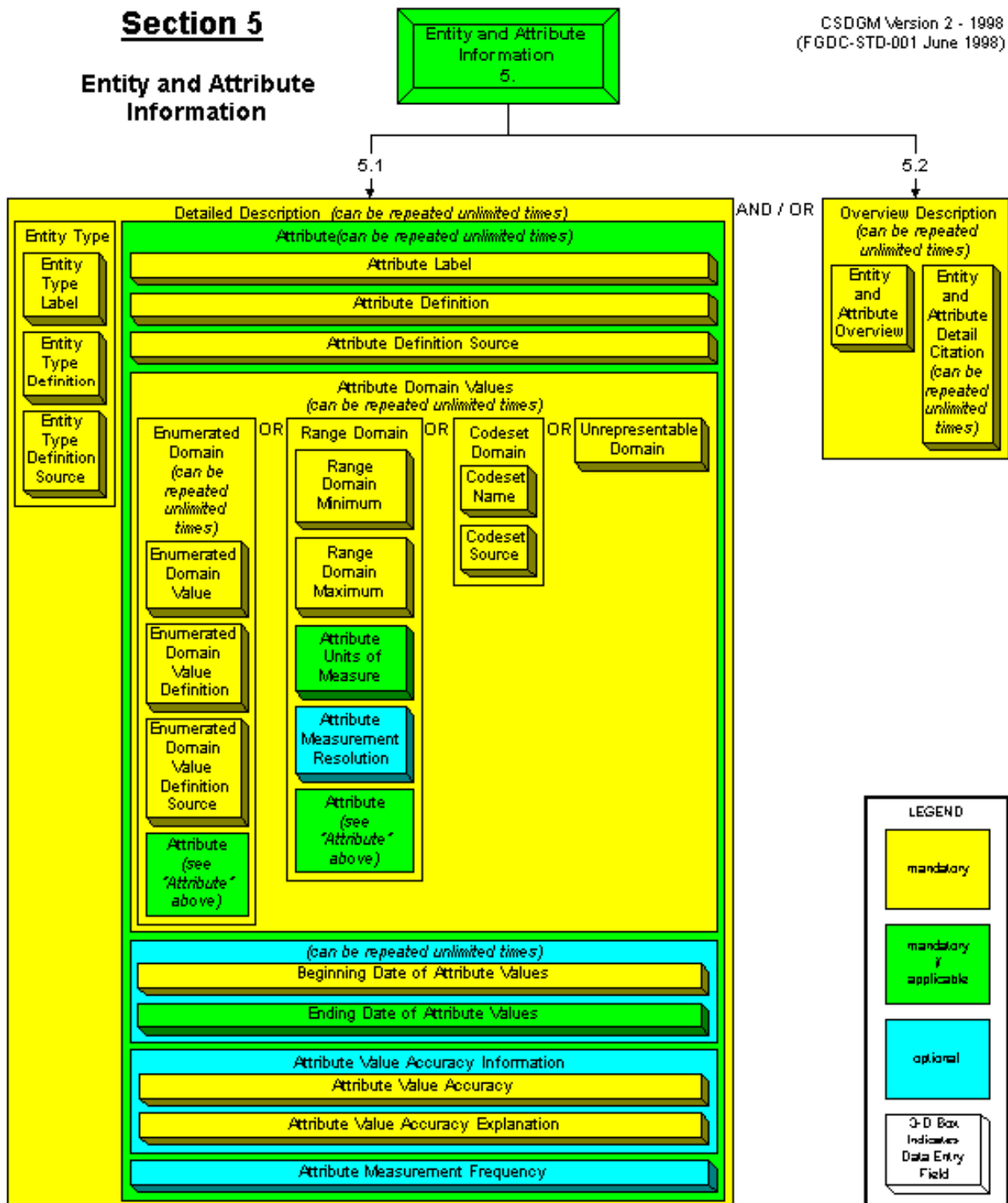
CSDGM Version 2 - 1998  
(FGDC-STD-001 June 1998)

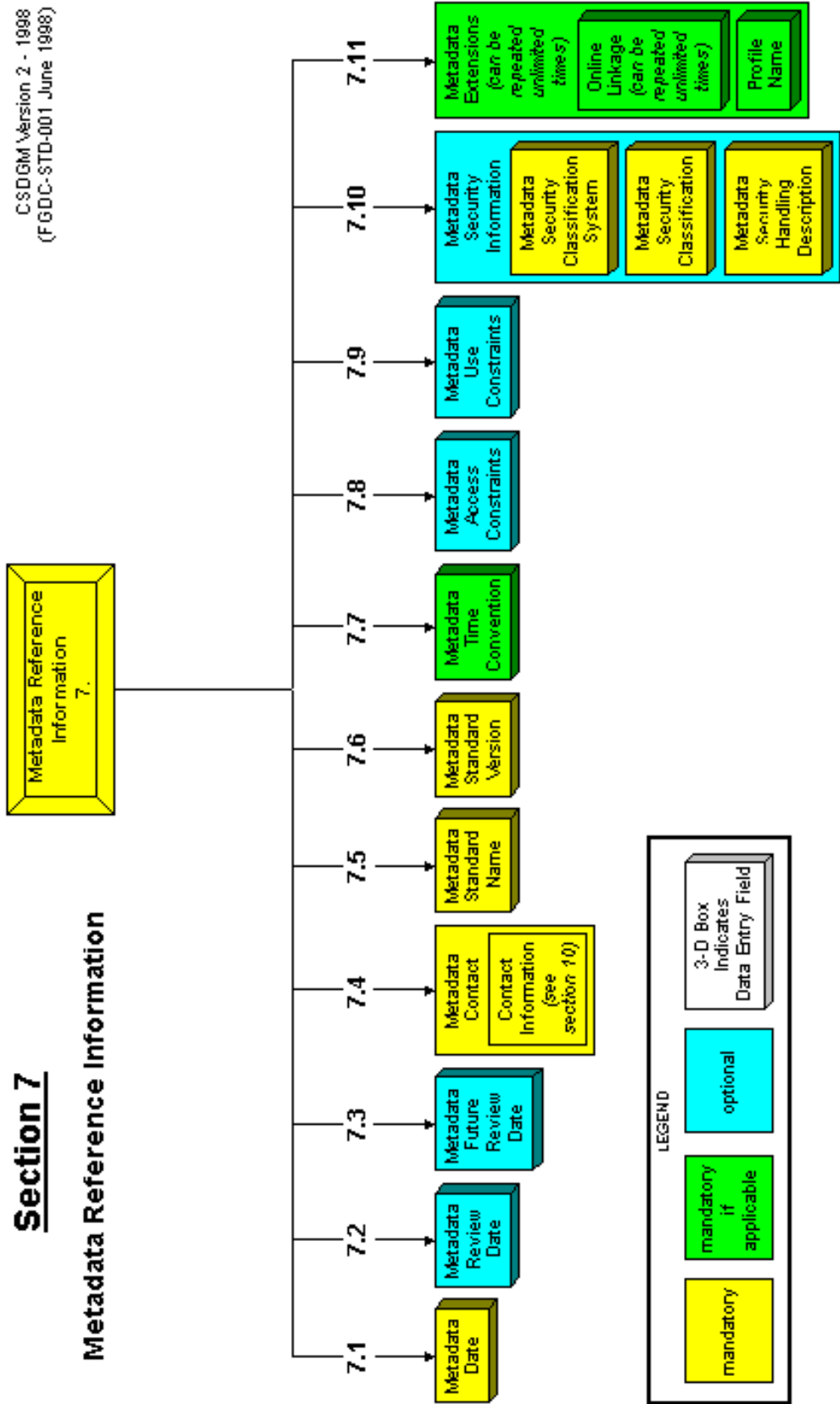


## Section 5

### Entity and Attribute Information

CSDGM Version 2 - 1998  
(FGDC-STD-001 June 1998)





**Section 8****Citation Information**

<b>Citation Information</b>
Originator <i>(can be repeated unlimited times)</i>
Publication Date
Publication Time
Title
Edition
Geospatial Data Presentation Form
<b>Series Information</b>
Series Name
Issue Identification
<b>Publication Information</b>
Publication Place
Publisher
Other Citation Details
Online Linkage <i>(can be repeated unlimited times)</i>
<b>Larger Work Citation</b>
Citation Information <i>(see Section 8)</i>

**Section 9****Time Period Information**

<b>Time Period Information</b>
Single Date / Time
Calendar Date
Time of Day
OR
Multiple Dates / Times
Single Date / Time (2 or more repetitions)
Calendar Date
Time of Day
OR
Range of Dates / Times
Beginning Date
Beginning Time
Ending Date
Ending Time

**Section 10****Contact Information**

<b>Contact Information</b>
Contact Person Primary
Contact Person
Contact Organization
OR
Contact Organization Primary
Contact Organization
Contact Person
Contact Position
Contact Address <i>(can be repeated unlimited times)</i>
Address Type
Address <i>(can be repeated unlimited times)</i>
City
State or Province
Postal Code
Country
Contact Voice Telephone <i>(can be repeated unlimited times)</i>
Contact TDD/TTY Telephone <i>(can be repeated unlimited times)</i>
Contact Facsimile Telephone <i>(can be repeated unlimited times)</i>
Contact Electronic Mail Address <i>(can be repeated unlimited times)</i>
Hours of Service
Contact Instructions

**LEGEND**

mandatory	mandatory if applicable	optional	3-D Box Indicates Data Entry Field
-----------	-------------------------	----------	------------------------------------