

**MEETING AGENDA  
DIVISION OF NATURAL SCIENCES AND MATHEMATICS  
WESTERN OREGON UNIVERSITY**

February 5, 2013; NS122 4:00 PM – NOTE TIME AND ROOM

**I. ROLL CALL / APPROVAL OF AGENDA**

**II. APPROVAL OF NOVEMBER 2012 MINUTES (No meetings convened in December or January)**

p. 2-4

**III. ANNOUNCEMENTS**

- a. 2013-14 schedules submitted; Fall Schedule entry on banner begins March 14, 2013
- b. Annual Reporting Process: Faculty Annual Reports Due to Dept.+Division Chairs June 30, 2013; Dept. Reports Due to Division Chair July 19, 2013; Division Report Due to Dean August 2, 2013
- c. WOU Office of Admissions 2012-2013 Recruitment Dates: Winter Preview Day II Feb. 23, Spring Preview Day May 4, T-SOAR May 18, SOAR: June 28, July 12-13, July 27.
- d. Chain of Communication: Faculty/Staff - Dept. Chair - Div. Chair –Dean-Provost –President
- e. Faculty Development Grants: Travel II and Reassignment Due April 8, 2013
- f. NSM Division Travel Supplement Deadlines: April 23, 2013 (following last year pattern)
- g. Vans spring term – field trips – April and May – 2 van rental for 2 months.
- h. Niki / Office Coordinator announcements; Niki retirement / position status for 2013

**IV. OLD BUSINESS**

- a. Review of December NSM Memo / Action List p. 5-6
- b. DeVolder Family Science Center – Construction/Budget Updates p. 7-8
- c. NS Building Renovation Planning
- d. NSM Infrastructure Plans / Updates: NS204 AIC-Funded Instructor Station Spring Break > p. 9-13
- e. ARC - Applied Baccalaureate programs revisited p. 14-19
- f. NWCCU Accreditation Revisited

**V. NEW BUSINESS**

- a. Administrative Reorganization / Dean LAS Search Process
- b. 2013 Spring NSM Student Awards Honors Night – Faculty Facilitator and Organizer needed?
- c. Pending Staff Searches: Niki/APA Replacement; Request for 0.5 FTE OSII position for DeVolder
- d. Completing Math Requirement

**VI. REPORTS**

- a. NSM Budget Report p. 21
- b. Faculty Senate
- c. Faculty Development Committee
- d. Academic Infrastructure Committee
- e. AFT/WOU
- f. Curriculum Committee
- g. Academic Requirements Committee
- h. PRC / Tenure and Promotion
- i. PURE/Academic Showcase
- j. Complaints

**VII. FINAL COMMENTS AND ADJOURNMENT**

Sharon

Dean Smith  
Mike Bartzley  
Bozeng  
PATY  
ALLEN  
1

## MEETING MINUTES

### DIVISION OF NATURAL SCIENCES AND MATHEMATICS

### WESTERN OREGON UNIVERSITY

November 6, 2012; NS122 3:30 PM - NOTE TIME CHANGE

#### I. ROLL CALL / APPROVAL OF AGENDA

In attendance:

Breeann Flesch, Rahim Kazerouni, Jeff Templeton, Bryan Dutton, Erin Baumgartner, Kristin Latham, Michael Baltzley, Patty Flatt, Steve Taylor, Arlene Courtney, Ava Howard, Karen Haberman, Matt Ciancetta, Laurie Burton, Cheryl Beaver, Mike Ward & Sharon Price

#### II. APPROVAL OF OCTOBER MINUTES

#### III. ANNOUNCEMENTS

a. Post-Tenure Review / Promotion and Tenure Files (Due: 3rd Friday in Nov. 11/16/12) Contact Steve or Jeff Templeton if you have questions. (1 binder and no staples please)

b. Sabbatical requests / proposals; (OUS "pink form" + Provost Supplement to Div. Chair / Dean by 12/17/12)

c. Spring 2013 schedule revisions, summer 2013 schedule, 2013-14 schedule due to Niki Winter available now on line.

See Page 4 for details or check with Niki personally on this if you have questions.

d. Annual Reporting Process: Faculty Annual Reports Due to Dept.+Division Chairs June 30, 2013; Dept.

Reports Due to Division Chair July 19, 2013; Division Report Due to Dean August 2, 2013

e. WOU Office of Admissions 2012-2013 Recruitment Dates: Fall Preview Day II Nov. 10, begins at 9:20am Winter Preview Day

I Jan. 26, Winter Preview Day II Feb. 23, Spring Preview Day May 4, T-SOAR May 18, SOAR: June 28, July

12-13, July 27. Page 5 - 6

f. Chain of Communication: Faculty/Staff - Dept. Chair - Div. Chair -Dean-

Provost -President

- g. Faculty Development Grants: Travel I Friday, October 26, 2012; Research Jan. 25, 2013; Travel II and Reassignment April 8, 2013 - being reviewed at this time.
- h. NSM Division Travel Supplement Deadlines: Nov. 27, 2012 and April 23, 2013 (following last year pattern) See Page 7
- i. AIC Remodel Proposals Due Nov. 12, 2012; See Page 8 AIC Equipment Proposals Due Feb. 1, 2013 (to be discussed later)
- j. Niki / Office Coordinator announcements - None at this time. Niki will report on this at the next meeting.

#### IV. OLD BUSINESS

- a. DeVolder Family Science Center - Construction/Budget Updates - weekly meetings held. Supports being poured. 1 week delayed due to piping issue. Moving along nicely though. 2 weeks we may start to see steel going up.
- b. NS Building Renovation Planning - things being shuffled and remodeling. Will use as is for now until budget allows.  
See Page 10 - 13 . . . Page 13 has table with usage charts.
- c. SPOC-WOU Follow-up: Pre-Engineering Feasibility Statement; (financially not possible at this time)  
2+2 China Programs See Page 15-16
- d. ARC - "Diversity" Course Guidelines See Page 17 - 21 Jeff Templeton sent information - old materials are on attached sheets. Committee is willing to entertain recommendations on improving the current documents. It is being reviewed by Faculty Senate.
- e. NSM Infrastructure Plans - Dept. submissions - Page 14 - get all proposals in by Jan. - with highest priority listed.
- f. Applied Baccalaureate programs revisited - Guest Visitor 4 PM, Rob Winningham, Psychology AB - 2009 OR Legislative session passed laws allowing 4 year degrees. See attachment for details. Also see Page 22 - 23 where Social Science weighed in on this.

## V. NEW BUSINESS

- a. Science Olympiad April 2013 - volunteers and facilities debriefing  
See page 24

Patty has volunteered to do 1 activity. Leadership needed. . . and student participation has not been volunteered. Rooms will need to be restricted. Steve will be responding on this. Erin is willing to get students (10 - 15) to help in her GS 325 class.

Mike LeMaster is willing to come to help the day of the event.

- b. Spring Term - Accreditation Revisited - Steve has all the reports and assessments all in files. Everything is assembled and ready to go for this.

## VI. REPORTS

- a. NSM Budget Report - See page 25
- b. Faculty Senate g. Academic Requirements Committee Legislative in progress of separating some of the OUS systems. Student health care - isn't automatically applied as University enrollment. Mark's work will be divided while needing to be out.
- c. Faculty Development Committee h. PRC / Tenure and Promotion (Files Due on Nov. 18)
- d Academic Infrastructure Committee i. Building Committee (Div. + Dept. Chairs) If equipment requires installation - you must get consultation estimate from physical plant. Quotes must be done by Trisha in writing - don't wait til last minute.
- e. AFT/WOU (workload committee) j. PURE/Academic Showcase - bargaining team meeting end of Nov.
- f. Curriculum Committee - Matthew Ciancetta had nothing to report
- g. Complaints - Steve's complaint in timing of student publications in PURE Journal
- h. AIC - See page 5

## VII. FINAL COMMENTS AND ADJOURNMENT

**Western Oregon University**  
**Division of Natural Sciences and Mathematics**  
**Memorandum**

From: Steve Taylor, Chair  
To: Division Faculty and Staff  
Date: December 5, 2012  
RE: December 2012 Business / Pending Action List

Colleagues:

In lieu of our monthly division meeting, please see below for a compilation of old business, new business and other related action items for when we return after winter break. Note. I will be traveling from December 13 to January 3, and the university is closed the week of Dec. 24. Templeton and Dutton will serve as signatories in my absence / checking the "in-box" in NS104 as needed.

Best wishes for happy holidays with family and friends, s.t.

**I. OLD BUSINESS**

- Applied Baccalaureate preliminary comments due to Dean Scheck by December 13 (as per email dated Nov. 27, 2012); additional division input on the AB topic will occur through the Academic Requirements Committee, Curriculum Committee and Faculty Senate in winter and spring terms.
- ARC Diversity Guidelines – comment and review period still in process at the committee level, Jeff Templeton representing NSM Division.
- Faculty Development and division travel supplements have been allocated for fall term. All proposals from the division were funded at a significant and equitable level. Another round of travel proposals will be reviewed in spring term. Thanks to the department chairs for their service in problem solving the budget allocation, good team work.
- Class scheduling for summer 2013 mostly complete, spring 2013 corrections in process, 2013-2014 schedules in process; department schedulers are working on it. Spring corrections to Niki by Dec. 17, 2013-14 schedule to Niki by Jan. 14. Thanks to all for work on the scheduling logistics, it's an ongoing chore to keep it moving forward in the system we have to work with.
- Sabbatical requests due to Dean by Dec. 17, 2012; copy to division chair.
- AIC remodeling proposals: NS204 / Biology smart-lab proposal was ranked as the #2 recommendation for funding by AIC. Follow-up administrative action pending. AIC round 2 equipment proposals: will be due early in winter term.
- DeVolder Family Science Center Update: project on schedule, structural steel near completion, upper story floors will be poured in coming weeks, exterior finish upgraded from manufactured concrete product to brick due to cost savings. Project in budget and moving forward.
- China 2+2 Biology proposal: department is in process of finalizing a response to the Dean. They are in the process of developing a prescriptive model that will accommodate

the potential for Chinese students to engage the curriculum, while minimizing logistical impacts to the greater program goals.

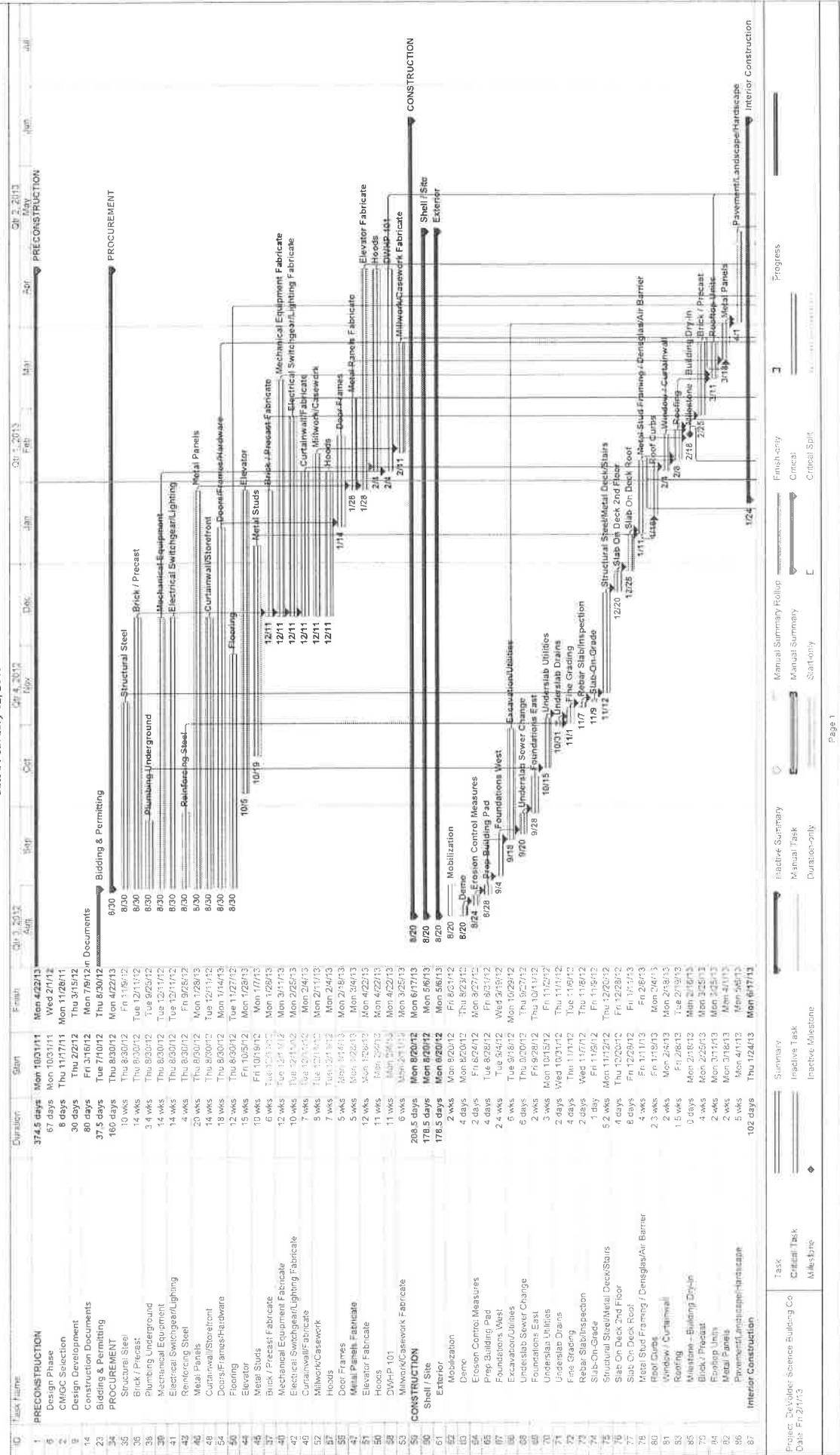
- NWCCU accreditation process: the Dean mentioned last week that the spring exercise will not involve a campus visit, but conducted via web dissemination. As discussed at last division meeting, Taylor is bird-dogging this situation and has compiled all available departmental materials, reports, SWOT analyses, etc. More information as the story unfolds.

## II. NEW BUSINESS

- NS016 upgrade: the old, narrow desks in NS016 will be replaced with elongated table-chair configuration over winter break. ADA and fire code requirements will reduce the currently over-stocked 35 seats to ~25-28 seats. Moveable tables will allow more creative use of the room, to move them into group configurations for project-style work, or arrange in linear fashion for traditional lecture mode. Niki has checked the room use history and contacted the relevant stakeholders to inform them of the seating change. Any NSM classes over the new seat capacity will be able to reschedule into NS122, based on historic data.
- Next Generation Science Standards review: there is a national state-driven project to unify and update science standards at the national level. Oregon Dept. of Ed. has been involved as a “core member” over the past year or so. The third and final draft of the standards will be released in January, and open for a 3-week public review period. The new standards are largely in line with the existing Oregon State Standards, which were updated a couple years ago. I will send out a call for comments when the next draft is released through the Oregon Dept. of Ed. More later for comment opportunities in January. The web site is: <http://www.nextgenscience.org/>
- Multiple course sequence catalog descriptions / update: The Associate Provost and Registrar are asking departments to review their course sequence catalog descriptions. There is an issue with multiple-course sequences that have a generalized catalog description, without any details on the content of each course in the sequence. The registrar is running into logistical difficulties articulating transfer credits, so there may be a move to separate out more detailed content descriptions for each course in a sequence. More on this in January, the Dean sent out a heads up on the issue last week. For now, we'll let it rest until there is more direction from the administration, heads up only at this point.

## III. OTHER ACTION ITEMS ON THE HORIZON

- Niki replacement search in spring term.
- Updated budget, S&S and new staffing requests for FY2013-2014 to accommodate the new science building
- Spring term activities to start packing supplies and instruments for move to new science building in early summer
- Summer move of chemistry and Bio A&P to new building
- Summer/Fall 2013 shuffling and realignment of Earth & Physical Science and Biology into vacated space in old NS Building

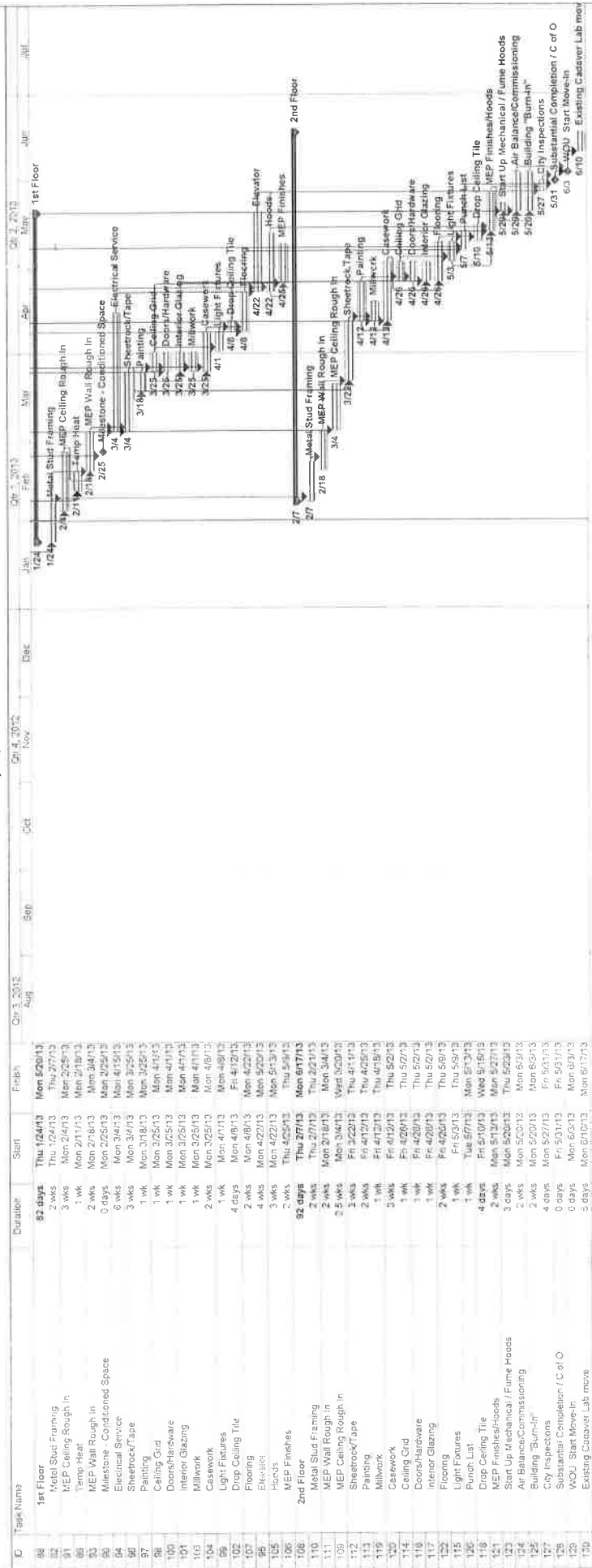




# Western Oregon University DeVolder Family Science Center

## Construction Schedule

dated February 02, 2013



Task	Summary	Inactive Summary	Manual Summary Rollup	Finish-only	Progress
Project DeVolder Science Building Co	Summary	Inactive Task	Manual Summary	Critical	
Task	Inactive Task	Manual Task	Manual Summary	Critical	
Milestone	Inactive Milestone	Duration-only	Start-only	Critical Split	

g





**Memorandum**

**To:** President Weiss, Provost Neely, Associate Provost McDonald, Dean Scheck, Eric Yahnke (Finance), Tom Neal (Physical Plant), Tommy Love (University Advancement)  
**From:** Steve Taylor, Chair, Division of Natural Sciences & Mathematics  
**Date:** December 7, 2012  
**RE:** 2012-13 NSM Division Infrastructure and Staffing Plan

Colleagues:

Please find enclosed an updated compilation of infrastructure and staffing needs in the Division of Natural Sciences and Mathematics (NSM). The departments in our division (Biology, Chemistry, Earth and Physical Science, Mathematics) have collectively compiled a list of equipment, building and staffing needs. This is an update to our plan that was circulated the past several years at this time, and now incorporates the pending developments associated with opening of the new DeVolder Family Science Center and concomitant reorganization of the "old" Natural Science Building in Fall 2013. We made significant infrastructure advances in the past year, including new building design and instrumentation purchases. While we understand that state budgets are currently in flux, we think it important that we keep our eye on the future and continue cultivating a vision of campus excellence.

We currently have over 600 students participating in our division majors and pre-professional programs, while producing greater than 38,000 student-credit-hours (SCH) per academic year (2011-2012 enrollments, including DEP courses). Between our introductory math offerings, LACC lab science sequences, and upper-level majors courses, NSM directly impacts ~80% of the WOU student body in any given term. In the interest of university recruitment, retention and student training for the 21<sup>st</sup> century marketplace, we feel it important to maintain division equipment, facilities and staffing at the highest levels possible. It is in the spirit of continued dialogue and university advancement that the Division of Natural Sciences and Mathematics submits this updated compilation for review. A summary of 2011-2012 enrollment trends and planned infrastructure/staffing needs are summarized as follows:

**I. Enrollment Trends**

	WOU 2011-12 Enrollments	NSM Division 2011-12 Enrollments	NSM Division 2011-2012 SCH
Fall	6230	4979	13,401
Winter	5849	4904	13,066
Spring	5564	4240	11,634
		<b>Total</b>	<b>38,101</b>

**II. Construction-Related Equipment Needs in New DeVolder Family Science Center**

A. Office and laboratory computers	\$169,600
B. Computing Hardware, Peripherals	\$15,400
B. Telecomm/Office Phones	\$6,300
C. Smart-lab console and multimedia	\$154,000
D. Laboratory instrumentation	\$239,500
<b>Total</b>	<b>\$584,800</b>

**III. Remodeling Needs in Old Natural Sciences Building / DeVolder Reorganization Plan**

A. NS103 Lecture Hall	~\$80,000
B. NS114 Science Ed.-Honors	~\$30,000
C. NS115 ES100 Lab	~\$30,000
D. NS116 ES100 Lab	~\$30,000
E. NS123 BI100 Lab	~\$30,000
F. NS125 BI100 Lab	~\$30,000
G. NS202 Biology Lab	~\$30,000
H. NS204 Biology Lab	~\$30,000
I. NS206 Bio Instrument Lab	~\$10,000
J. Biology Greenhouse Repairs and Upgrades	~\$24,000
<b>Total</b>	<b>~\$324,000</b>

**IV. Existing Technology and Equipments Needs in NSM Division Program Areas**

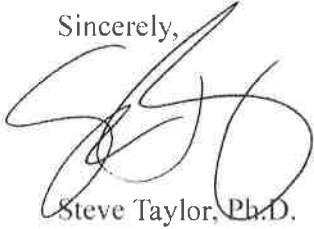
A. Mathematics Computing Hardware, Smartboards, Student I-Pad Stations	\$ 27,000
B. Biology Laboratory Student Computer Upgrades/Additions	\$18,000
C. Biology Laboratory Equipment and Microscopes	\$142,000
D. Earth Science Equipment, Microscopes and Storage Cabinets	\$ 99,400
<b>Total</b>	<b>\$286,400</b>

**V. Anticipated NSM Division Staffing Requests for 2013**

A. Continued, ongoing request for much needed Earth and Physical Science tenure line to offset anomalously high dependence on adjunct instructors (salary + OPE estimate assumes step 3)	\$70,400/yr
B. Conversion of Visiting Assistant Professor in Mathematics to Tenure Track (salary + OPE estimate assumes step 3)	\$70,400/yr
C. Retirement replacement of Administrative Program Assistant (salary + OPE estimate assumes mid-step)	\$58,267/yr
D. New Office Specialist II position to support operations in DeVolder Family Science Center upon opening in Fall 2013 (salary + OPE estimate assumes mid-step)	\$54,725/yr
E. Potential request for new Forensic Science tenure line, dependent upon successful 2013-15 funding allocations from state legislature as part of OUS budget package (salary + OPE estimate assumes step 3)	\$70,400/yr

Attached are detailed equipment lists and justification statements in support of the summary provided above. Please contact me if you have any questions or would like to discuss this planning document further. Select priority elements of this planning document will be submitted by departments to the Academic Infrastructure Committee as part of their 2012-2013 proposal process. Your commitment to advancing the science and mathematics programs at Western Oregon University is greatly appreciated.

Sincerely,

A handwritten signature in black ink, appearing to be 'S. Taylor', written over the word 'Sincerely,'.

Steve Taylor, Ph.D.  
Professor of Geology  
Chair, Division of Natural Sciences and Mathematics

2012-2013 Department Chairs: Bryan Dutton, Biology; Arlene Courtney, Chemistry; Jeff Templeton, Earth and Physical Science; Cheryl Beaver, Mathematics

Natural Science Building Reorganization / Utilization Plan - Fall2013			
BUILDING	PROGRAM	ROOM TITLE	ROOM NUMBER
DFSC	Biology	Lab: A&P	101, 105
DFSC	Biology	Lab: Cadaver Storage	103
DFSC	Biology	Lab: Prep Room	102, 104
DFSC	Biology	Offices	114, 115, 117, 118
DFSC	Biology	Research Lab	116
NSB	Biology	BI100 Lab	123
NSB	Biology	BI200-300-400 Lab	204
NSB	Biology	BI213 - Animal Dissection Lab, Upper Division Biology	006
NSB	Biology	Biology Adjunct/Faculty	119
NSB	Biology	Biology Adjunct/Faculty	119A
NSB	Biology	Biology Faculty Office/Research Space	010A
NSB	Biology	Biology Faculty Office/Research Space	011
NSB	Biology	Biology Instrumentation Room	206A
NSB	Biology	Biology Instrumentation Room	206B
NSB	Biology	Biology Lab Preparation	124
NSB	Biology	Biology Lab Preparation	124A
NSB	Biology	Chemical Storage	203A
NSB	Biology	Dedicated BI100 Lab	125
NSB	Biology	Dedicated Preserved Animal Specimen Room	005
NSB	Biology	Greenhouse	302
NSB	Biology	Greenhouse	302A
NSB	Biology	Greenhouse	302B
NSB	Biology	Lab Preparation	203
NSB	Biology	Lab: Microbiology	201
NSB	Biology	Lab: Microbiology	201A
NSB	Biology	Lab: Upper Division / Collections	004
NSB	Biology	Lab: Upper Division Biology	202
NSB	Biology	Marine Bio / Invertebrate Workroom	003
NSB	Biology	Marine Bio / Invertebrate Workroom	003A
NSB	Biology	Office	001
NSB	Biology	Office	002
NSB	Biology	Office	021A
NSB	Biology	Office	021B
NSB	Biology	Office	021C
NSB	Biology	Office	117
NSB	Biology	Office	118
NSB	Biology	Office	120
NSB	Biology	Office	219
NSB	Biology	Office	220
NSB	Biology	Office	221
NSB	Biology	Office	221A
NSB	Biology	Office	222
NSB	Biology	Office	223
NSB	Biology	Office Research Lab	001A
NSB	Biology	Office Research Lab	117A
NSB	Biology	Office Research Lab	120A
NSB	Biology	Office Research Lab	219A
NSB	Biology	Office Research Lab	222A
NSB	Biology	Office-Lab Preparator	121
NSB	Biology	Storage	304
NSB	Earth and Physical Science	ES100 Lab	115
NSB	Earth and Physical Science	ES100 Lab	116
NSB	Earth and Physical Science	ES100 Preparatory/Storage	115A
NSB	Earth and Physical Science	ES100 Preparatory/Storage	115B
NSB	Earth and Physical Science	ES200-300-400 Lab	218
NSB	Earth and Physical Science	GS Labs - ES200 Labs - Upper Division Earth Science	017

NSB	Earth and Physical Science	Lab Preparation	022A
NSB	Earth and Physical Science	Lab: General Physics	217
NSB	Earth and Physical Science	Lab: Geology Workroom	018
NSB	Earth and Physical Science	Lab: GIS Research Lab	218A
NSB	Earth and Physical Science	Lab: Paleontology Workroom	019
NSB	Earth and Physical Science	Office	110
NSB	Earth and Physical Science	Office	111
NSB	Earth and Physical Science	Office	112
NSB	Earth and Physical Science	Office	209
NSB	Earth and Physical Science	Office	209A
NSB	Earth and Physical Science	Office	210
NSB	Earth and Physical Science	Office	211
NSB	Earth and Physical Science	Office	212
NSB	Earth and Physical Science	Office	214
NSB	Earth and Physical Science	Office Research Lab	110A
NSB	Earth and Physical Science	Office Research Lab	112A
NSB	Earth and Physical Science	Office Research Lab	210A
NSB	Earth and Physical Science	Office Research Lab	211A
NSB	Earth and Physical Science	Office Research Lab	213A
NSB	Earth and Physical Science	Office-Lab Preparator	113
NSB	Earth and Physical Science	Paleontology Storage	009
NSB	Earth and Physical Science	Scanner / Plotter Room	216A
NSB	Earth and Physical Science	Storage	022B
NSB	Earth and Physical Science	Storage	216B
NSB	Earth and Physical Science	Storage/Workroom	217A
NSB	GS325 Science Ed	GS 325 Science Ed. Lab	114
NSB	GS325 Science Ed	GS 325 Science Ed. Lab	114A
NSB	GS325 Science Ed	GS 325 Science Ed. Lab	114B
NSB	NSM Division	Lecture Room	016
NSB	NSM Division	Chemical Storage	020
NSB	NSM Division	Chemical Storage	020A
NSB	NSM Division	Conference Room	105
NSB	NSM Division	Copy Room	106
NSB	NSM Division	Lecture Room	101
NSB	NSM Division	Lecture Room	103
NSB	NSM Division	Lecture Room	122
NSB	NSM Division	Lecture Room	215
NSB	NSM Division	Mailroom	104A
NSB	NSM Division	NS Computer Lab	216
NSB	NSM Division	Office	104B
NSB	NSM Division	Office - Reception	104
NSB	NSM Division	Radio Station	305
NSB	NSM Division	Storage	102
NSB	OPEN	Office	109A
NSB	OPEN	Open Lab Area and Swing Space	015
NSB	OPEN	Open Office and Swing Space	010
NSB	OPEN	Open Office and Swing Space	012
NSB	OPEN	Open Office and Swing Space	012A
NSB	OPEN	Open Office and Swing Space	013
NSB	OPEN	Open Office and Swing Space	213

## Applied Baccalaureate Degrees

Applied baccalaureate degrees are distinguished by a focus on serving the needs of adults who already hold an associate's degree and now desire to pursue a bachelor's degree in order to advance their careers or, in some cases, to change careers. Most commonly the associate's degree held by the adult is an Associate of Applied Science (AAS). These degrees provide the knowledge and skills needed by students to start a career immediately after completing the degree rather than preparing them to continue to upper division courses and a bachelor's degree. It is easiest to consider the scenario where those who have received an AAS degree, started a career based on this degree, and later have decided that they would like a bachelor's degree. These adults may have some of the following career aspirations:

- To increase their responsibility level but remain focused on a technical career.
- To move into supervision or management.
- To obtain the advantages associated with a liberal arts degree including general broader knowledge and more advanced thinking and problem solving skills, possibly including a desire to continue to pursue a graduate degree.

--from Oregon Joint Board of Education steering committee report, April 19, 2010

### Admission to the Applied Baccalaureate Tract

The Applied Baccalaureate is **NOT** designed for the traditional student who currently enrolls at WOU. Admission into an Applied Baccalaureate degree track at WOU requires that the student meets the following conditions: The student has either completed an Associate of Applied Science degree (or other terminal/non-transfer associate degree) or has a minimum of 60 quarter units toward an Associate of Applied Science degree (or other terminal/non-transfer associate degree); placement of transfer units into the AB curriculum will be determined in consultation with the academic advisor for the specific AB program.

Students who have pursued and/or have completed an Oregon Transfer Module (OTM), Associate of Arts Oregon Transfer degree (AAOT), Associate of Science/Oregon Transfer Business degree, Associate of Science degree or an Associate of General Studies degree (AGS) **are not eligible** for admission into the AB track—they will continue to be admitted into our traditional BA, BS, BFA, BMus degree tracks.

### Applied Baccalaureate degrees are offered in:

Accounting  
Computer Science  
Economics  
Finance  
Gerontology  
Information Systems

International Business  
Management  
Marketing  
Psychology

Students who complete the university requirements listed below are granted this degree.

- Minimum of 180 credit hours including 62 upper-division
- Minimum of 2.00 (C) grade point average (GPA) in all work completed at WOU
- Residence: minimum of 45 of the last 60 credit hours completed through WOU
- Maximum of 124 community college transfer credits including vocational technology
- AB Core Curriculum: completion of 36 credit hours as outlined in the section on undergraduate programs
- Academic major: 55-75 credits; minimum of 36 upper-division credits
- Academic minor: optional; minimum of 12 upper-division credits unless otherwise stated

## **Applied Baccalaureate Core Curriculum**

### **Mission statement**

The AB Core provides students with a general education core experience to help them develop a foundation of basic knowledge for a more healthy and successful personal and professional life.

### **Learning Outcomes**

1. Demonstrated understanding of the liberal arts and their role in a diverse society.
2. Demonstrated effective use of oral, written and computational skills.
3. Demonstrated ability to interact collaboratively.

The AB Core is a required part of all AB degrees and comprises a minimum of 36 of the 180 credit hours necessary for graduation. Math, computer science, cultural diversity, quantitative literacy and writing intensive course requirements, where applicable, are tailored to the various applied baccalaureate degrees offered at WOU (see p XX).

It is critical that students consult with the Academic Advising and Learning Center or their academic advisor as they select AB Core courses to avoid mistakes that may prolong their time in college.

Courses completed as part of the AB Core Curriculum may also be used to fulfill requirements within a student's major or minor program (i.e., be double-counted).

## **Standard Applied Baccalaureate Core Curriculum Courses**

**Written/Oral/Visual Communication – select 3 classes (minimum of 9 units) from at least two categories**

**Writing**

WR135 or above required (4)

Minimum of 6 units of Writing Intensive required

**Communication Studies**

COM 111 Principles of Public Speaking (3)

COM 112 Interpersonal Communication (3)

Other Id/ud courses suggested by Com Studies Department

**English**

ENG 204, 205, 206 Survey of British Literature (4 each)

ENG 253, 254 Survey of American Literature (4 each)

LING 210 Introduction to Linguistics (4)

WR 222 Writing for the Sciences (4)

WR 321 Business Writing (4)

WR 322 Technical Writing (4)

WR 350 News Writing (4)

Other Id/ud courses suggested by English Department

**Art**

All studio art classes (4) [Note: List of appropriate courses will be submitted by art faculty]

Appropriate placement assessed by department

**Societal & Cultural Engagement – select 3 classes (minimum of 9 units) from at least two categories**

**Social Sciences**

ANTH 213 Language and Culture (4)

ANTH 214 Physical Anthropology (4)

ANTH 215 Archaeology (4)

ANTH 216 Cultural Anthropology (4)

ANTH 395 Medical Anthropology (4)

EC 201 Introduction to Microeconomics (4)

EC 202 Introduction to Macroeconomics (4)

GEOG 105 Introductory Physical Geography (4)

GEOG 106 Introductory Economic Geography (4)

GEOG 107 Introductory Cultural Geography (4)

HST 104 World History (4)

HST 105 World History (4)

HST 106 World History (4)



Catalog Copy for Applied Baccalaureate Degrees (1/15/2013)

HST 201 History of the United States (4)  
HST 202 History of the United States (4)  
HST 203 History of the United States (4)

HST 484 Health, Medicine and Gender in Historical Perspective (4)

PS 201 American National Government (3)  
PS 202 State and Local Government (3)  
PS 203 International Relations (3)  
PS 204 Intro to Comparative Politics (3)

PS 350 Intro to Public Policy (3)  
PS 430 The Aging Society (3)  
PS 433 Healthcare Politics and Policy (3)

SOC 223 Introduction to Sociology: Theory (3)  
SOC 224 Introduction to Sociology: Research (3)  
SOC 225 Social Problems (3)

Other ld/ud courses suggested by departments

**Modern Languages**

French, German, Spanish or other contemporary language/culture courses (1-4 each)  
Appropriate placement assessed by department

**Religion**

R 201 Introduction to the World's Religions: Eastern (3)  
R 204 Introduction to the World's Religions: Western (3)

**Performing Arts (Dance, Music, Theatre)**

D 251 Introduction to Dance (3)  
D 170, 171, 172 World Dance 1, 2, 3; to be taken in sequence (1 each)

MUS 201 Introduction to Music and Its Literature (3)  
MUS 203 Jazz History (3)  
MUS 204 Music of the World (3)

TA 110 Introduction to Theatre (3)  
TA 112 Introduction to Film (3)

Other ld/ud courses suggested by social science departments

**Critical, Quantitative, Scientific-Thinking – select 3 classes (minimum of 9 units)  
from at least two categories**

**Computer Science**

CS 122 or above (3-4)

**Math**

Math 105 or above (3-4)

**Natural Sciences**

ES 104, 105, 106 Earth System Science I, II, III (5 each)

ES 201, 202, 203 Principles of Geology (4 each)

BI 101, 102, 103 General Biology (5 each)

BI 211, 212, 213 Principles of Biology (5 each)

CH 104, 105, 106 Introduction to Chemistry (4 each)

CH 221, 222, 223 General Chemistry (5 each)

PH 201, 202, 203 General Physics (4 each)

PH 211, 212, 213 General Physics With Calculus (4 each)

Appropriate placement assessed by departments

Other ld/ud courses suggested by social science departments

**Philosophy**

PHL 101 Introduction to Philosophy: Knowledge and Reality (3)

PHL 102 Introduction to Philosophy: Personal Morality and Social Justice (3)

PHL 103 Introduction to Logic (3)

PHL 251 Ethics (3)

PHL 252 Medical Ethics (3)

PHL 255 Environmental Ethics (3)

PHL 261 Metaphysics: Theory of Being (3)

PHL 262 Epistemology: Theory of Knowledge (3)

PHL 263 Philosophy of Mind (3)

PHL 282 Philosophy of Art (3)

PHL 283 Philosophy of Religion (3)

**Technology, Life Skills- select 3 classes (minimum of 9 units) from at least two categories**

**Business, Entrepreneurship**

BA 101 Introduction to Business (3)

BA 211 Financial Accounting (4)

BA 213 Managerial Accounting (4)

BA 217 Accounting for Non-accountants (3)

BA 220 Introduction to financial Management (3)

BA 229 Personal Finance (3)

ENT 320 Entrepreneurial finance (1)

Catalog Copy for Applied Baccalaureate Degrees (1/15/2013)

ENT 330 Panning and Creating New Ventures (3)

ENT 350 Small Business Management (3)

Other ld/ud courses suggested by Business division

**Computer Science**

CS 121 or above

**Health & Physical Education**

HE 211 Techniques of Relaxation (3)

HE 227 Community and Public Health (4)

HE 325 Nutrition (4)

HE 329 Health and Social Services (4)

HE 399 Poverty and Public Health (4)

HE 375 Epidemiology (4)

HE 413 Complementary and Alternative Medicine (4)

HE 434W Diseases (4)

HE 465D International Health (4)

HE 485W Bioethics and Public Health (4)

PE 131 Individual Health and Fitness (2)

PE 111-199 activity courses (2)

Other ld/ud courses suggested by HPE division

**Psychology, Gerontology**

PSY 201 General Psychology (4)

PSY 202 General Psychology (4)

PSY 443 Group Processes (4)

GERO 360 Cognitive and Physical Changes in Aging (4)

Other ld/ud courses suggested by psychology division

Proposed wording:

Students must complete the mathematics portion of the Quantitative Literacy graduation requirement of MTH 105 (for a BA) or MTH 111 or above (for BS) by the end of their sophomore year at WOU. Students transferring in after their sophomore year must complete this part of the graduation requirement by the end of their 3<sup>rd</sup> term at WOU.

SAT and ACT scores may be used for placement only during the freshman year at WOU. If a student's first math class is delayed until after their freshman year, they will need to take the placement test. Placement test scores expire after one year.

## 2012 - 2013 NSM DIVISION BUDGET

## Budget Notes:

Budgeted amount for Supplies and Services NSM902 (July 1, 2012) **\$30,202**

2010-2011 S&S = \$52,314;

Expense **\$32,100**

ESTIMATED GENERAL OFFICE OPERATING EXPENSES **\$26,752**

Telecom (Phones and Networking)	183	\$300
Copiers (with credit)	2863	\$10,000
Office Supplies & Book Store	5115	\$7,050
Postage	32	\$300
Duplicating Services	603	\$1,500
Faculty travel	1475	\$4,000
Physical Plant - work orders	80	\$2,500
Telecommunication wiring	210	\$600
Miscellaneous	754.94	\$502

\$22,112 was removed from NSM902 and redirected to Telecomm Starting July 1, 2011; network and phone expenses will be paid for directly by WOU Telecomm, no longer a charge-back to Divisions. Divisions will be responsible for installation costs only, not the monthly network and phone connection fees.

TOTAL ESTIMATED GENERAL EXPENSES **\$26,752**

<b>MATHEMATICS</b>	NSM902 Starting	\$5,000
Money already spent	NSM902	\$2,000
NSM941 Lab Fees		\$1,087
SEP/DEP MTH70-95 - Course-Related Toner-Copier-Supplies		\$0
NSM941 Lab fees expended		\$0
Balance	Total balance	<b>\$4,087</b>

SCIENCE DEPARTMENT BUDGETS STARTING July 1, 2012 **\$185,000**

Collective Dept. Budget Total = \$146,750 \$146,750

<b>BIOLOGY</b>	NSM960 Starting	\$63,103	\$63,103
Summer lab fees rolled over into 2012-13		\$5,186	
Money already spent		\$26,834	
Balance		<b>\$41,455</b>	

43% of \$146,705 balance; % based on 2011-2012 enrollments  
~Su12 roll over; % based on July 11, 2012 enrollments

<b>CHEMISTRY</b>	NSM961 Starting	\$32,285	\$32,285
Summer lab fees rolled over into 2012-13		\$861	
Money already spent		\$16,940	
Glass Breakage + Goggle Fees		\$5,000	
Balance		<b>\$21,206</b>	

22% of \$146,705 balance; % based on 2011-2012 enrollments  
~Su12 roll over; % based on July 11, 2012 enrollments

Based on 2011-2012 Academic Year Totals / projected forward

<b>EARTH &amp; PHYSICAL SCIENCE</b>	NSM962 Starting	\$51,362	\$51,362
Summer lab fees rolled over into 2012-13		\$1,834	
Money already spent		\$13,653	
Balance		<b>\$39,543</b>	

35% of \$146,705 balance; % based on 2011-2012 enrollments  
~Su12 roll over; % based on July 11, 2012 enrollments

#### NATURAL SCIENCE STUDENT INFRASTRUCTURE AND OVERHEAD

<b>STUDENT LAB NETWORK</b>		\$2,000	\$2,000
Money already spent		\$0	
Balance		<b>\$2,000</b>	

<b>STUDENT PAPER</b>		\$5,000	\$5,000
Money already spent		\$0	
Balance		<b>\$5,000</b>	

<b>FIELD TRIP</b>		\$6,000	\$6,000
Money already spent		\$3,564	
Balance		<b>\$2,436</b>	

<b>EQUIPMENT REPAIR</b>		\$4,000	\$4,000
Money already spent			
Balance		<b>\$4,000</b>	

<b>Millipore DI Water Purifier</b>		\$4,000	\$4,000
<b>MedEquip Maintenance</b>		\$2,300	\$2,300
<b>NW Natural Gas</b>		\$150	\$150
		<b>\$6,450</b>	

\$38,250 Total budget for science overhead and contingency

<b>Contingency 8% of Total NSM922 Budget</b>		<b>\$14,800</b>	\$14,800
--	--	-----------------	----------

8% budget contingency, to be released back to depts.

**TOTAL** \$185,000