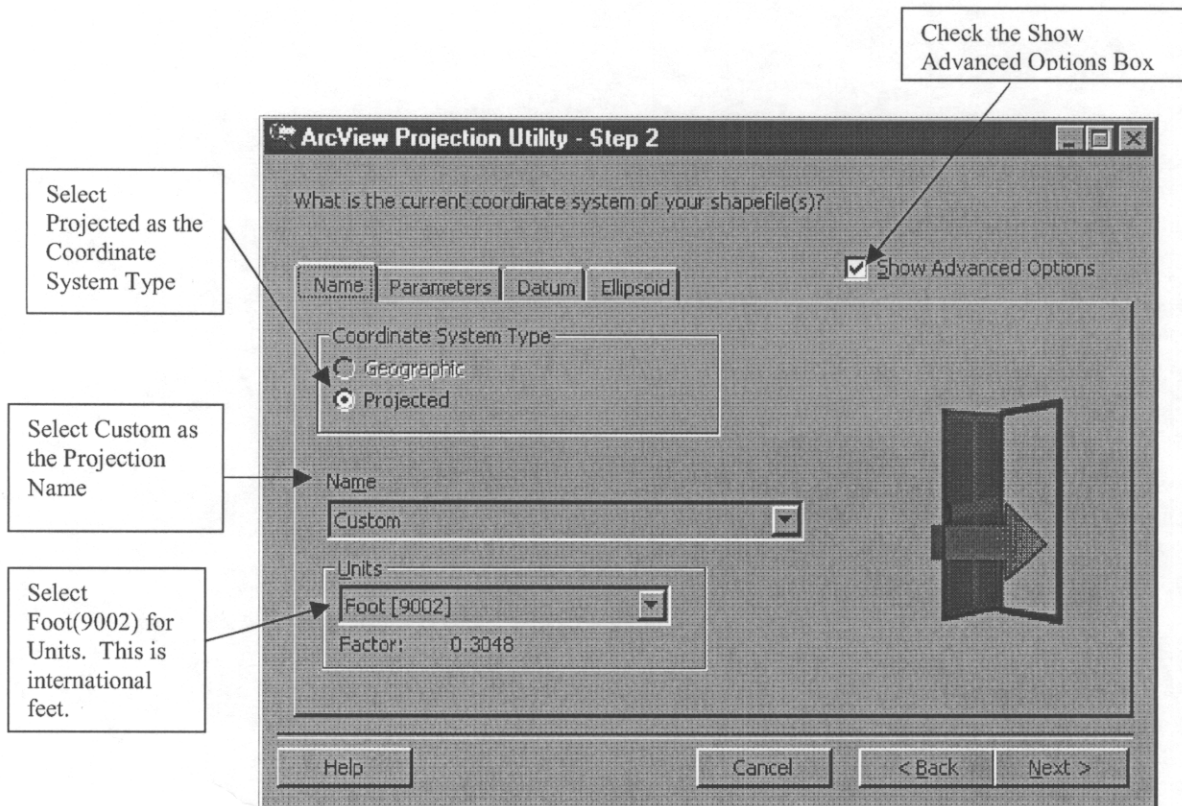


Example of projecting from Oregon Lambert, Nad83, International Feet to UTM 10, Nad27, Meters

1. From the ArcView Menu Select File, Extensions and then check the box next to the Projection Utility Wizard.
2. Select the shape file or files you want to reproject. If you select more than one shapefile they must all have the same projection. If a file with a .prj extension exists for the shapefile the projection is known.
3. Click next and fill out the form as shown in the form as shown below in the following order. 1. Select the projected button first, 2. Select Custom for the name, then select Foot(9002) for the units. Be sure to follow the order outlined.



4. Select Parameters tab and fill in the form as shown below.

ArcView Projection Utility - Step 2

What is the current coordinate system of your shapefile(s)?

Show Advanced Options

Name Parameters Datum Ellipsoid

Name:
Custom

Geographic Coordinate System:
GCS_North_American_1983 [4269]

False Easting: 1312335.958
False Northing: 0

Prime Meridian:
Greenwich [8901]
Longitude: 0.0

Base Projection:
Lambert_Conformal_Conic [43020]

Central_Meridian: -120.5
Central_Parallel: 41.75
Standard_Parallel_1: 43
Standard_Parallel_2: 45.5

Help Cancel < Back Next >

5. Select the Datum Tab and select the Geographic Transformation NAD_1983_to_NAD_1927_NADCON as shown below.

ArcView Projection Utility - Step 2

What is the current coordinate system of your shapefile(s)?

Show Advanced Options

Name Parameters Datum Ellipsoid

Name:
D_North_American_1983

Geographic Transformation:
NAD_1983_To_NAD_1927_NADCON

Datum Shift Information:
Area of Use:
NAD27 to NAD83 - CONUS

POSC Code: 108001

Delta X: na Rotation X: na
Delta Y: na Rotation Y: na
Delta Z: na Rotation Z: na
Delta Scale: na

Transformation Method: NADCON [9613]

Help Cancel < Back Next >

Handwritten notes:
~~TIPO~~
~~NAD 1927 TO NAD 1983 - NADCON~~

6. Select Next and fill out the new coordinate system parameters as shown in the form below.

ArcView Projection Utility - Step 3

Select the new coordinate system for your new shapefile(s).

Show Advanced Options

Name Parameters Datum Ellipsoid

Coordinate System Type

Geographic

Projected

Name

NAD_1927_UTM_Zone_10N [26710]

Units

Meter [9001]

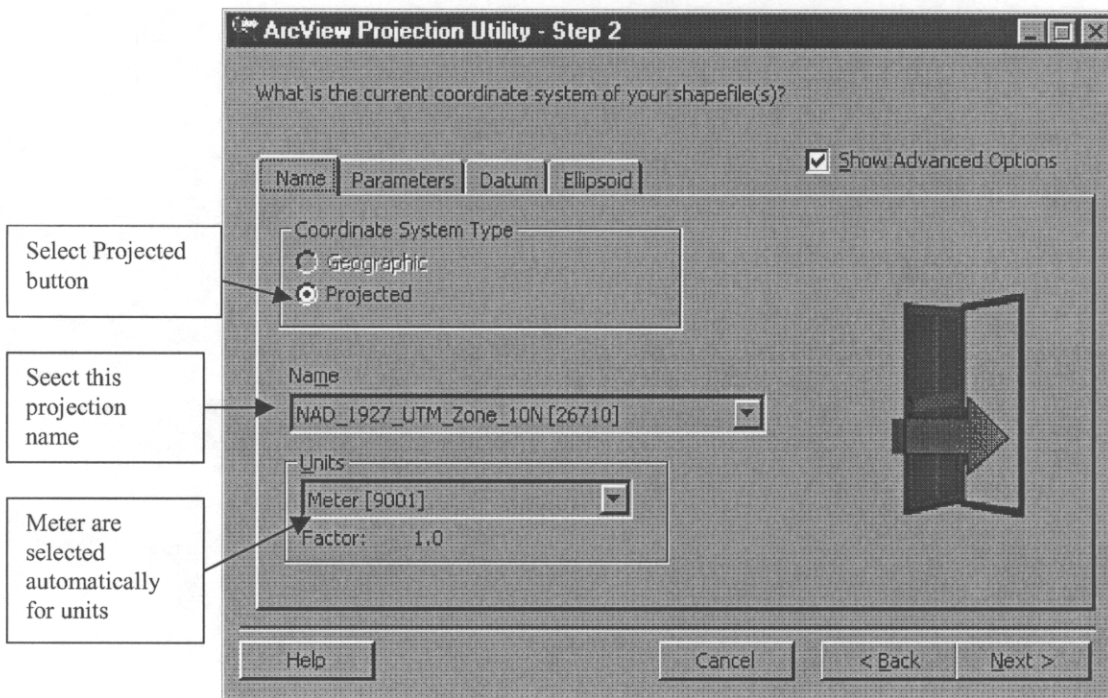
Factor: 1.0

Help Cancel < Back Next >

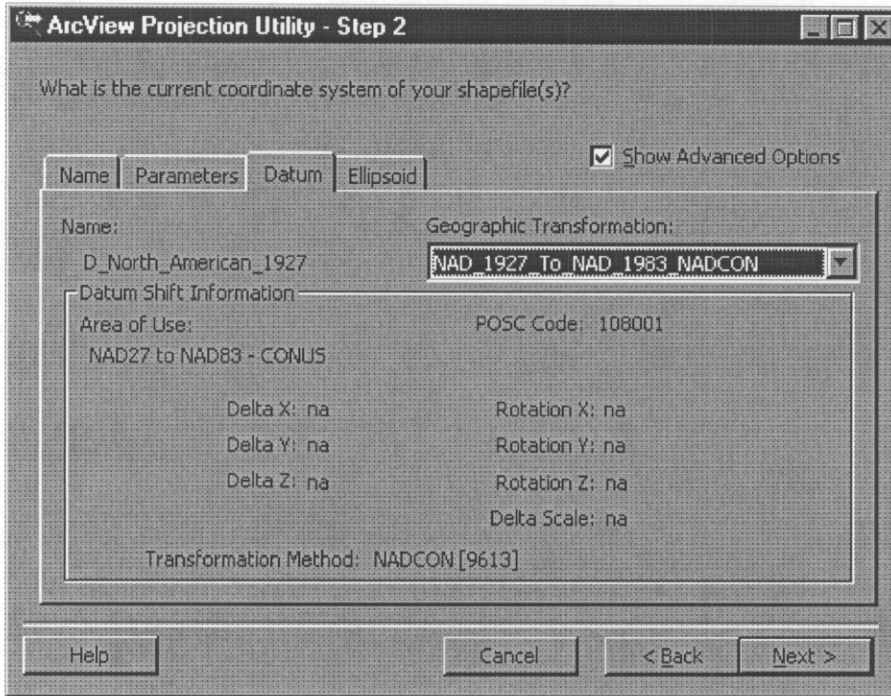
7. Select Next and select the output shape file name. If more than 1 shape file is selected to be reprojected you must enter a directory different from the one where the input shape files reside. The output files will be given the same names as the input files.
8. Select next. The parameters you have entered for the input and output projections will be displayed. If you are satisfied that they are correct select finish.

Example of projecting from UTM 10, Nad27, Meters to Oregon Lambert, Nad83, International Feet

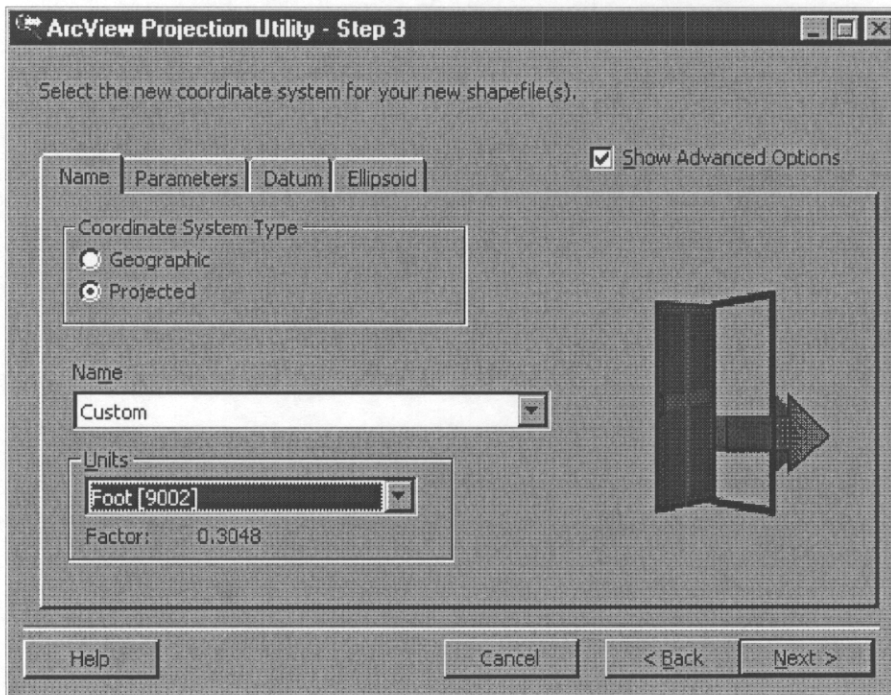
1. From the ArcView Menu Select File, Extensions and then check the box next to the Projection Utility Wizard.
2. Select the shape file or files you want to reproject. If you select more than one shapefile they must all have the same projection. If a file with a .prj extension exists for the shapefile the projection is known.
3. Click next and fill out the form as shown in the figure below in the following order.
 1. Select the projected button first, 2. Select NAD_1927_UTM_ZONE_10N[26710].



4. Select the Datum Tab and select the geographic transformation option NAD_1927_To_NAD_1983_NADCON as shown below.



5. Select Next and fill in the new coordinate system form as follows.



6. Select the Parameters Tab and fill out the form as follows.

ArcView Projection Utility - Step 3

Select the new coordinate system for your new shapefile(s).

Show Advanced Options

Name: Custom

Geographic Coordinate System: GCS_North_American_1983 [4269]

False Easting: 1312335.958

False Northing: 0.0

Prime Meridian: Greenwich [8901]

Longitude: 0.0

Base Projection: Lambert_Conformal_Conic [43020]

Central_Meridian: -120.5

Central_Parallel: 41.75

Standard_Parallel_1: 43

Standard_Parallel_2: 45.5

Help Cancel < Back Next >

7. Select Next and select the output shape file name. If more than 1 shape file is selected to be reprojected you must enter a directory different from the one where the input shape files reside. The output files will be given the same names as the input files.
8. Select next. The parameters you have entered for the input and output projections will be displayed. If you are satisfied that they are correct select finish.