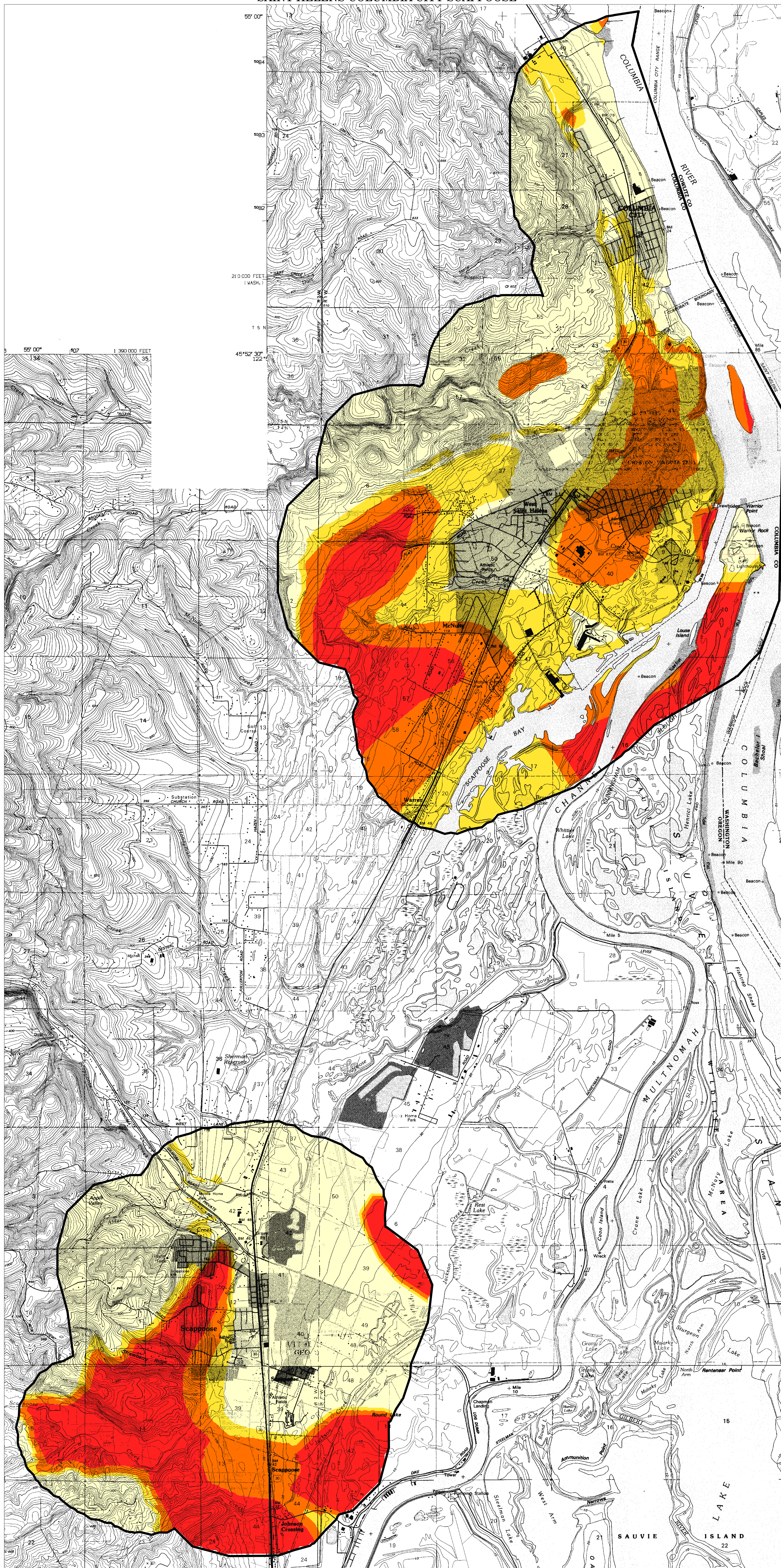


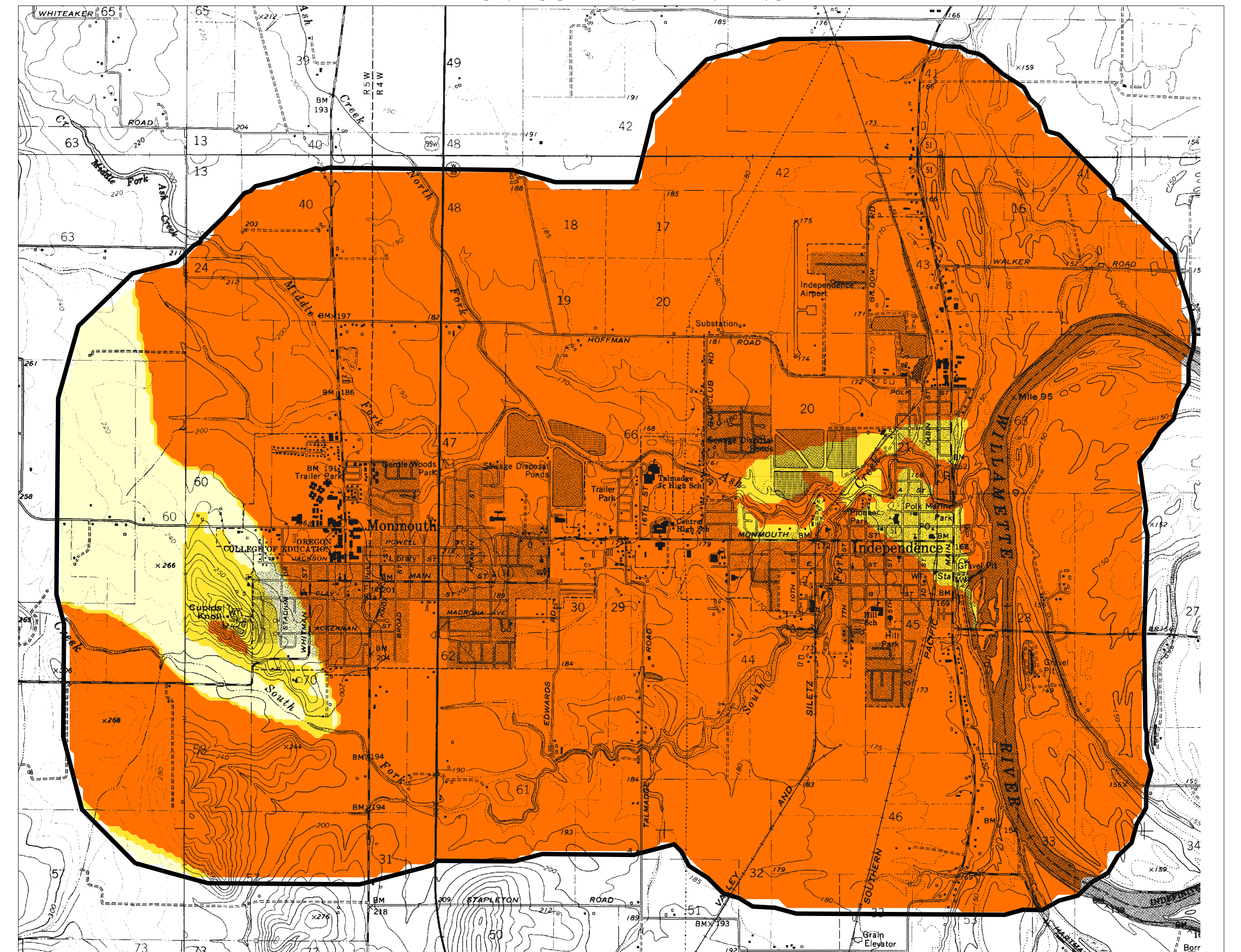
Relative Earthquake Hazard Maps for Selected Urban Areas in Western Oregon

Dallas, Hood River, McMinnville-Dayton-Lafayette, Monmouth-Independence, Newberg-Dundee, Saint Helens-Columbia City-Scappoose, Sandy, Sheridan-Willamina
1999

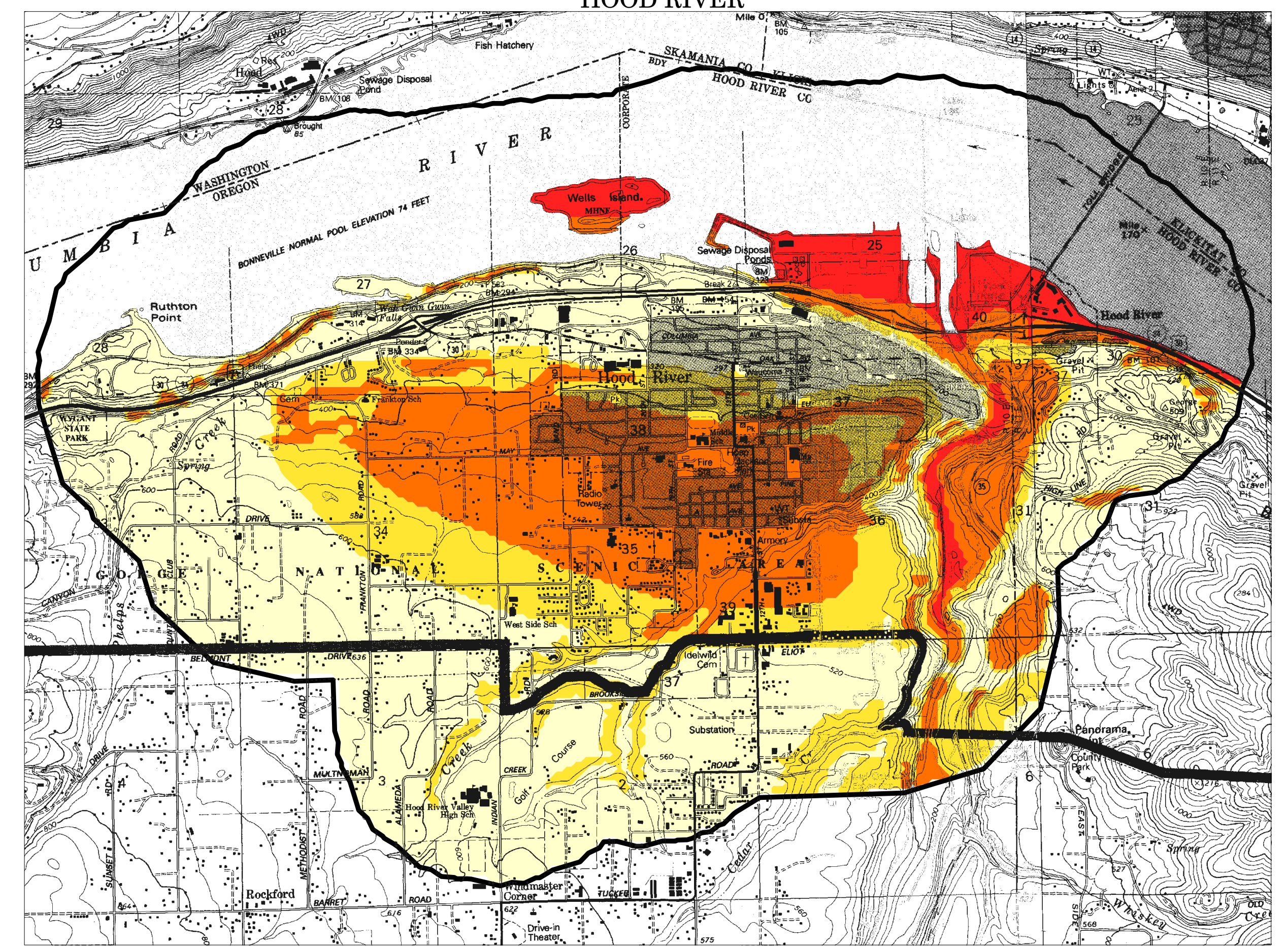
SAINT HELENS-COLUMBIA CITY-SCAPPOOSE



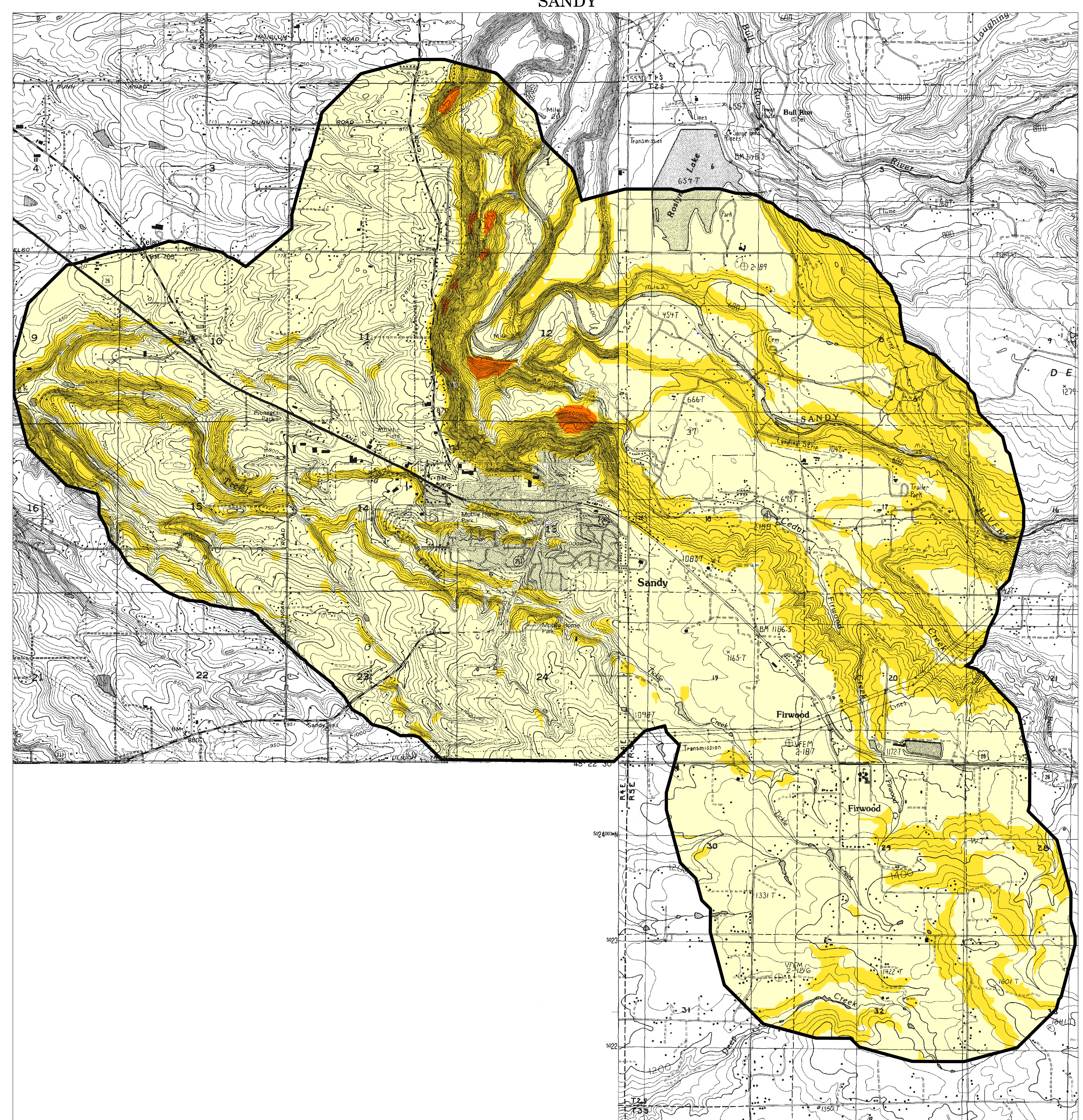
MONMOUTH-INDEPENDENCE



HOOD RIVER

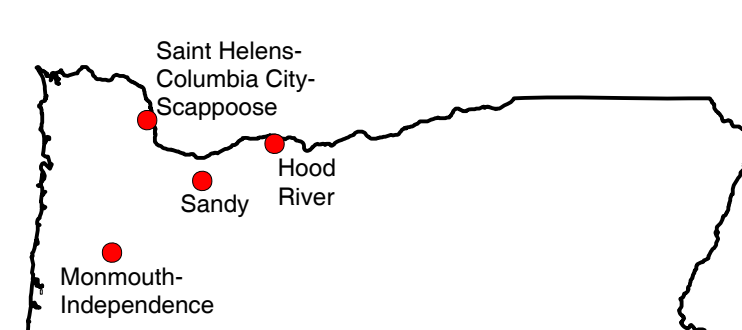


SANDY



Scale 1:24,000

0 0.5 1 Mile
Base maps by U.S. Geological Survey,
7½-minute topographic quadrangles,
Digital Raster Graphic series



Location Map

Relative Earthquake Hazard Map

Hazard zones are based on the combined effects of ground shaking amplification, liquefaction, and earthquake-induced landsliding.

- Zone A - Highest hazard
- Zone B - Intermediate to high hazard
- Zone C - Low to intermediate hazard
- Zone D - Lowest hazard

See the accompanying text for an explanation of how these zones were defined and what the various levels of hazard mean.

IMPORTANT NOTICE
This map depicts earthquake hazard zones that are the result of combining the maps of individual hazards and are based on limited geologic and geophysical data. These hazards and data are described in the accompanying report. At any given site in the map area, site-specific data could give results that differ from those shown on this map. This map cannot replace site-specific investigations. Some appropriate uses are discussed in the accompanying report. This map shows areas that are relatively more or less hazardous due to local geological conditions within a community. For a complete understanding of the earthquake hazard, see also GMS-100, Earthquake Hazard Maps for Oregon.

These maps were produced by the Oregon Department of Geology and Mineral Industries with funding by the State of Oregon and the U.S. Geological Survey (USGS), Department of the Interior, under USGS award #1434-97-GR-03118. The views and conclusions contained in this document are those of the authors and should not be interpreted as necessarily representing the official policies, either expressed or implied, of the U.S. Government.

This map is available from:
The Nature of the Northwest Information Center
800 NE Oregon Street, 45
Portland, OR 97232
503.872.0719 www.natureofnw.org
and the Baker City and Grants Pass, Oregon field offices of the Oregon Department of Geology and Mineral Industries