



OK ✓ All E. for 8/17/10  
8/18/10  
GREG SIEGUTZ DATE



**Final Report for OWEB grant #208-8001**

Oregon Plan Effectiveness: Effects of Contemporary Forest Harvest on Aquatic Ecosystems in Trask, Hinkle and Alsea Watersheds

P.I., Arne Skaugset  
Oregon State University  
Department of Forest Engineering, Resources and Management  
Corvallis, OR 97331  
arne.skaugset@oregonstate.edu  
(541) 737-3283

The Oregon Watershed Enhancement Board (OWEB) has funded the project, Effects of Contemporary Forest Harvest on Aquatic Ecosystems in Trask, Hinkle and Alsea Watersheds. This project is comprised of the watershed studies in the Watersheds Research Cooperative (WRC). In 2010, the WRC will complete its eighth year. The WRC started with the Hinkle Creek Paired Watershed Study but since has added two state-of-the-art paired watershed studies, the Alsea Revisted and the Trask, in the last several years. Since inception, the WRC has raised approximately \$8 million dollars to fund the cooperative research. The projects remain funded at a minimal level.

Hinkle Creek is, currently, going into the final two years of post-harvest data collection. The Alsea Study just installed their first harvest entry. The Trask Study is still in the calibration phase with roads and harvest scheduled for 2011 and 2012, respectively. It is a sign of the commitment of the cooperators that all three projects remain active and funded despite the current economic climate. Thank you to all of our cooperators for your continued support.

These projects have purchased instrumentation, supplies, and labor to support previously stated goals. Monies spent during the duration of the project are presented in Table 1.

Table 1

Project	
Alsea-Equipment	\$ 14,923
Alsea-Labor	\$ 26,411
Hinkle-Equipment	\$ 3,245
Trask-Equipment	\$ 287,702
Trask-Labor	\$ 67,718
<b>Total</b>	<b>\$ 400,000</b>

**A summary of accomplishments for the three paired watershed studies include:**

- **Hinkle Creek Paired Watershed Study**

- First entry on non-fish bearing stream reaches and second harvest entry on fish-bearing stream reaches completed.
- Data collection continues on post-harvest data.
- Field tour for Board of Forestry Field.
- Field tour for Society of American Foresters (SAF) in association with Oregon SAF meeting.
- Theses awarded:
  - Lance George, M.S.,Hydrology
  - Aaron Burger, M.S.,Fisheries
  - Kelly Kibler, M.S., Hydrology
  - Tim Otis, M.S.,Hydrology
  - Mark Novick, M.S.,Fisheries
  - Nicolas Zegre, PhD,Hydrology
  - Nick Som, PhD, Statistics
  - Niels Leuthold PhD, Amphibians
- Hydrology, fisheries, amphibians, statistics, and invertebrate oral presentations and posters presented at regional, national, and international meetings.
- Publications:
  - Refereed Journal Articles

- Bateman, D. S., R.E. Gresswell, and A.M. Berger. 2009. *Passive integrated transponder tag retention rates in headwater populations of coastal cutthroat trout*. North American Journal of Fisheries Management 29:653-657.
- Submitted – In Review
  - Zegre, NP, AE Skaugset, NA Som, JJ McDonnell, and LM Ganio. *In lieu of the paired catchment approach: Hydrologic model change detection at the catchment scale*. Submitted to Water Resources Research.
  - Som, N.A., Zegre, N.P., Ganio, L.M., and A.E. Skaugset. *Prediction Intervals for Change Detection in Paired Watershed Studies*. Hydrological Sciences Journal.
- Written- In Internal Review
  - Cumulative watershed effect of contemporary forest harvesting on summer stream temperatures of Hinkle Creek, Oregon. For submission to FEM.
  - Mechanisms for Change of Summer Stream Temperatures Downstream of Forest Harvest in Headwater Streams, Hinkle Creek, Oregon. For submission to Hydrologic Processes.
  - Estimating the Effects of Summer Low Flow in Headwater Streams of Hinkle Creek Following Forest Harvest. For submission to JAWRA.
  - Energy Processes and Associated Effects of Forest Harvest on Summer Stream Temperatures of a Headwater Watershed, Hinkle Creek, Oregon. For submission to FEM.
  - Som, NA, LM Ganio, R Gresswell, D Bateman, and D Hockman-Wert. Sampling Headwater Streams for Autocovariance Parameter Estimation.
  - Som, NA, LM Ganio, and R. Gresswell. Assessing Autocovariance Measures of Patch Size in Coastal Cutthroat Trout.
  - Luethold, N, M Adams, & others. Short-term response of Pacific giant salamander to timber harvest in southwestern Oregon. For submission to the Journal of Wildlife Management.
  - Luethold, N, M Adams, & others. Response of Pacific giant salamanders and tailed frogs to threat of predation under differing sediment levels.
- Continued support

- Douglas County, BLM RAC, and OFIC
- Allyn Ford, President of Roseburg Forest Products, was awarded the Environmental Excellence Award by the Associated Oregon Industries.
- **Alsea Watershed Study Revisited**
  - First harvest entry completed.
  - Data collection continues for post-harvest results.
  - Field tours for Corvallis EPA colleagues, Mid-Coast Watersheds Council, Mary's Peak Chapter of the SAF, and Mid-Coast Watersheds TMDL technical advisory committee.
  - Hydrology and forestry oral presentations and posters presented at regional and national meetings.
  - Fisheries: Purchased Mezura Palm computers to collect field data.
  - Hydrology: Purchased and installed a flume at headwater location.
- Publications:
  - Submitted – In Review
    - Hale, V.C., Schoenholtz, S.S., Ice, G.G., and Stednick, J.D. 2010. Forest harvesting and streamflow: Assessing long-term hydrologic recovery in the Oregon Coast Range. Journal of Hydrology. In review.
  - In Preparation:
    - Hale, V.C., McDonnell, J.J., and Brooks, J.R. 2010. Mechanisms of dry-season forest-stream connections in Pacific Northwest headwater catchments. In preparation for Hydrological Processes.
    - Hale, V.C. and McDonnell, J.J. 2010. Scaling runoff processes through catchment inter-comparison: importance of geology, topography, soils, and vegetation. In preparation for Water Resources Research.
    - Hale, V.C. and McDonnell, J.J. 2010. Bedrock groundwater controls on catchment storage, runoff response, and residence times in steep, headwater catchments. In preparation for Water Resources Research.
    - Hale, V.C., Schoenholtz, S.S., Ice, G.G., and Stednick, J.D. 2010. Patterns and controls on dissolved nitrate in streams draining managed and natural forests. In preparation for Journal of Hydrology.

- PhD student, Cody Hale, received the Horton award for achievement in hydrology
  - Theses awarded:
    - Cody Hale, M.S., Hydrology
- Continued funding
  - Plum Creek and NCASI
- **Trask River Watershed Study**
  - Calibration phase of study continues, including, data collection in fisheries, hydrology, macroinvertebrate, amphibians, stream chemistry, and trophic levels.
  - Hydrology: Installed eight flumes at headwater locations to measure water discharge, stream temperature, and specific conductance.
  - Climate/energy budgets: Purchased portable climate stations for calculating onsite and upstream/downstream budgets.
  - Fisheries: Purchased both full- (FDX) and half- (HDX) duplex, pit tags and associated handheld and swim through antenna readers and two Smith-Root Electrofishers to collect fisheries data.
  - Nutrients and Habitat: Purchased dissolved oxygen, temperature and specific conductance instruments, small battery-powered pumps, digital hemispherical camera and analytical software, and temperature sensors and software. Field crew performed basin-wide surveys of stream channel morphology and to characterize the riparian area.
  - Fisheries, nutrients and habitat, and macro-invertebrate oral presentations and posters presented at regional and national meetings
  - Theses awarded:
    - Heidi Vogel Anderson, M.S., Fisheries
    - Mark Raggon, M.S., Fisheries
  - Fisheries field tour for the U.S. Fish and Wildlife Service, Regional and OR/WA staff and overall study tours for private, state, and federal groups (See Table 1).
  - Continued Funding
    - Weyerhaeuser and Oregon Department of Forestry
- **Watersheds Research Cooperative**
  - Various supporters of the WRC have written letters of support for the projects.

- The WRC sponsored a conference entitled “Assessing the Response of Streams to Contemporary Forest Practices: A Conference on Paired Watershed Studies” to disseminate results of the WRC watersheds project to the public.

Table 2, Field tours in the Trask Watershed

Date	Presentation	field tour	Participants/Audience	participant Institution or Agency	number of people	Presenter or Leader
9/18/2007	x		Resource managers	BLM/ODF		Jason Dunham
12/12/07	x		researchers	USGS FRESC	20	Jason Dunham
12/18/07			forest managers and collaborators	WRC		Johnson, Dunham, Adams, Li
	x				25	
2/7/08	x		university, agency, industry	FRL committee	15	Jason Dunham
			researchers	Stream Team Monday Morning Meeting		
3/3/2008	x				25	Jason Dunham
4/2/2008	x		agency managers	BLM state Fisheries	5	Jason Dunham
5/6/2008	x		agency, university	Western Division AFS	40	Heidi Anderson
6/4/2008	x		researchers	NABS Annual Meeting	40	Li, Johnson
7/17/2008		x	Compton/Perakis	EPA/USGS	5	Sherri Johnson
			TEP, channels and ODF			
7/28/2008		x	recreation	ODF/ TEP	10	Liz Dent
						Maryanne Reiter
8/4/2008		x	North Valley Operations	Weyerhaeuser	4	
9/3/2008		x	stream ecologists	PSU/USGS/Taiwan	5	Sherri Johnson
						Ruth Jacobs,
9/3/2008		x	BLM managers	BLM/USGS	15	USGS
9/23/2008		x	Trask researchers and agencies	OSU/USGS/PSU/PNW/ODF/BLM	16	Liz Dent
10/1/2008	x		university and researchers	OSU Fisheries and Wildlife	30	Heidi Anderson
						Adams,
			industry, university, agency	WRC Workshop, OSU campus		Ashkenas, Dunham, Li, Johnson, Bilby
10/13/2008	x				150	
			Weyerhaeuser Technology			
10/28/2008		x	Lead Team	Weyerhaeuser	20	Bilby, Reiter
						Stephanie
2/14/2009	x		agency, university	TWC Oregon chapter	40?	Jenkins

**A summary of results for the watershed studies include:**

- **Trask River Watershed Study**

- Preliminary fisheries results at Trask are showing: 1) The phenology of emergence of young-of-year coastal cutthroat trout varies among years and can be substantially delayed in some sites; 2) there is a consistent pattern of higher maximum growth rates in coastal cutthroat trout from Gus Creek; 3) seasonal survival shows a weak influence of size, with larger fish showing lower probabilities of survival, consistent with work on Hinkle Creek; 4) whereas there is considerable variability in responses we have measured, it is

the pattern of variability itself that is more interesting than trends in mean or median values.

- In fisheries research, further analysis and interpretation will be conducted in 2010 and the first manuscript on annual monitoring will be prepared for publication in a scientific journal.
- In amphibian research at Trask, key response variables differ among reaches and over time. Our emphasis at this stage of the study is to characterize this heterogeneity so that we can compare it to post treatment patterns to determine treatment effects.
  - There are highly significant differences in initial body size of *Ascaphus* between reaches.
  - Within developmental stages, body size of *Ascaphus* declines steeply over the summer despite individual growth. This decline differs significantly between reaches.
  - There was a 40% increase in numbers of adult *Ascaphus* captured over 2008 despite fewer searches completed. Despite the overall increase in *Ascaphus* captures, the majority of plots were remarkably similar in the abundance of *Ascaphus* between years. The increase was due to changes at a minority of plots.
  - Movements were reduced in 2009 from 2008 for *Ascaphus* but not for *Dicamptodon*.
- Lab experiments at Oregon Hatchery Research Center (OHRC) suggest that a change of 3 degrees Centigrade during growing season for autumnal emerging invertebrates could result in changes in growth and time of emergence, though the specific changes are taxa-specific.
  - Completed analysis of OHRC experiment suggests that response to increased temperatures varies among fall emerging taxa. Earlier emergence occurred for Psychoglypha, particularly for males. For other species, as in the response of the mayfly Paraleptophlebia, current conditions may be optimal, and heated temperatures resulted in smaller sizes and/or less synchronous emergence between sexes. A manuscript is in preparation for submission to Journal of the North American Benthological Society.
- Community analyses of invertebrates in Trask streams using NMS-Ordination shows no distinctive grouping by sites among any of the four basins or by year. Spring versus summer 2007 show some seasonal differences in assemblages. Headwater benthic

assemblages are distinctive from downstream. Benthic differences between headwater and downstream sites persisted in Spring 2007 samples.

- A comparison with other Watershed Research Cooperative basins shows spring benthic invertebrates at the Trask tended to be higher in taxa richness than in the Alsea watershed, and comparable to uncut reaches at Hinkle Creek. Benthic densities were not different from those at Alsea and higher than at Hinkle.
- Stream metabolism studies indicate that all streams are strongly heterotrophic, i.e., respiration is greater than primary production. This is the norm in heavily shaded, forested streams with large inputs of terrestrial plant material.

- **Hinkle Creek Paired Watershed study**

- No impact was detected in maximum stream temperature at the watershed scale, which means that spatial variability in maximum stream temperature was greater than the treatment impact.
- Streamflow and sediment yield increased after harvesting in headwater catchments and at the basin-scale in the Hinkle Creek Paired Watershed Study.
  - Increases in streamflow were consistent with previous studies and were attributed to reduced transpiration and canopy interception.
  - Increases in sediment yield were attributed to increased stream power from the increased streamflow.
  - The largest increases in streamflow and sediment yield occurred during the winter season and corresponded with the occurrence of storms.
- There were no detectable changes in stream-bottom invertebrate measures (density, total richness and EPT richness) attributable to upstream timber harvest in tributary or mainstem sites. Similarly, examination of ordination plots gave no indication that upstream harvest affected the relative abundances of invertebrate taxa.
- There were no significant differences in annual relative growth rates of coastal cutthroat trout (*Oncorhynchus clarkii clarkia*) among pre- and post-harvest periods in the treated and reference watersheds.
- No detectable relationship between total biomass of salmonids or the density of age 1+ year old cutthroat trout and annual relative growth rate was observed.



- Downstream impacts from timber harvest on coastal cutthroat trout growth in South Fork Hinkle is minimal.

For additional information, please visit <http://watershedsresearch.org/> .

# **Cumulative Environmental Effects of Contemporary Forest Management Activities in Headwater Basins of Western Oregon**

## **The Hinkle Creek Paired Watershed Study**

**Study Leaders:** Arne E. Skaugset, OSU Department of Forest Engineering; Judith Li, OSU Department of Fisheries and Wildlife; Kermit Cromack, OSU Department of Forest Science; and Robert E. Gresswell and Michael Adams, Forest and Rangeland Ecosystem Science Center, U.S. Geologic Survey.

### **Introduction**

The Hinkle Creek Paired Watershed Study, the initial installation of the Watersheds Research Cooperative (WRC), is designed to fill a critical gap in knowledge regarding the environmental effectiveness of contemporary forest practices on intensively managed forest land. The Hinkle Creek Paired Watershed Study is being conducted on lands owned by Roseburg Forest Products (RFP), which actively manages the young, harvest-regenerated stands of Douglas-fir. Current knowledge on this subject comes primarily from studies of historic practices in the initial harvest of naturally grown forests. The needed knowledge must come from contemporary, state-of-the-art practices carried out on harvest-regenerated, young forests on forestland that will be managed intensively, in perpetuity, for the production of wood products.

The Hinkle Creek Paired Watershed Study is located in the foothills of the Cascade Mountain about 25 miles northeast of Roseburg, Oregon. The study watersheds are almost entirely owned and managed by Roseburg Forest Products; these watersheds support a harvest-regenerated stand of 55-year-old Douglas-fir, and have an existing road system. Two harvest entries are planned for the South Fork of Hinkle Creek, the treatment watershed. The first entry, planned for 2005, will consist of four harvest units located along perennial, non-fish-bearing streams. The second entry, planned for 2007, will consist of four harvest units located along the main stem or tributary fish-bearing streams. The research project will investigate the effect of these harvest entries and subsequent intensive management activities on local and cumulative effects on hydrology, water quality, aquatic habitat, fish, amphibians, and aquatic insects. The Hinkle Creek Paired Watershed Study extends until 2011.

The objectives of the Hinkle Creek Paired Watershed Study are to determine the:

- effects of forest management on the physical, chemical, and biological characteristics and habitat quality in small streams without fish,
- influence of changes in the physical, chemical, and biological characteristics and habitat quality on amphibian and invertebrate abundance, distribution, and movement, in headwater streams with and without fish, and
- role of movement in maintaining abundance and diversity of fish and amphibians as habitat quality changes throughout the stream network.

## **Statement of the Problem**

### ***Private Industrial Forestry***

During the last 15 years the philosophies of forestland management for federal forestland have bifurcated strongly with those of state and private forest lands. In response to listings of populations and stocks of fish as threatened or endangered under the Endangered Species Act (ESA), managers of federal forestland have increasingly concentrated on restoration activities and management of forest ecosystems over the scale of landscapes (FEMAT 1993). In response to these changes in federal policy, the supply of timber from federal forestlands was reduced markedly and thus, society is now increasingly dependent on state and private forest lands to provide needed solid wood products (OFRI 2003). Currently, over 75 per cent of the annual harvest in Oregon comes from the 22 per cent of the commercial forestland base owned by the private industrial forest sector (ODF 2004, OFRI 2003). Further, inventories of unmanaged residual timber and/or unmanaged, harvested-regenerated forest stands are declining and private industrial forestland owners are more dependent than ever on forest stands that they have planted and cultivated for a future resource supply (Adams et al 2002). To sustain current levels of harvest into future decades, private industrial forestland will have to be intensively managed. This intensive management includes maintaining access to the proportion of commercial forestland available to be actively managed and maintaining access to the suite of intensive forest management tools that can be carried out on that land.

### ***Environmental Effects of Forestry***

That forest management, especially timber harvest, can include negative effects is well documented (Meehan 1991, Salo and Cundy 1987). The effects of forest management on stream ecosystems include alteration of the hydrology, solar insolation and stream temperature, habitat complexity, delivery and accumulation of large wood, sediment yield, and channel morphology (Hall and Lantz 1969; Everest et al 1987; Gregory et al 1987; Bilby and Ward 1991; Chamberlin et al 1991; MacDonald et al 1991; Johnson and Jones 2000; Naiman et al 1998 a, b; Vanderbilt et al 2003). The scale and magnitude of the environmental effects are affected by the extent and intensity of the harvest, logging methods, geology, topography, watershed size, and the timing and magnitude of large, infrequent post-harvest storms (Murphy and Hall 1981; Swanson et al 1989; Hicks et al 1991). The response of fish populations to forestry-induced effects on aquatic ecosystems has been linked to declines in the diversity and abundance of fish in the Pacific Northwest (Bisson et al 1987, 1992; Nehlsen et al 1991; Sedell and Beschta 1991; Reeves et al 1993).

The persistence of native fishes in the Pacific Northwest is uncertain and many evolutionary groups of anadromous salmonids are threatened with extirpation (Nehlsen et al 1991; Frissell 1993; Thurow et al 1997). Over half the native taxa in the Columbia River basin are listed under the Endangered Species Act, are being considered for listing, or are deemed sensitive (Lee et al 1997; Thurow et al 1997). Coastal cutthroat trout are not currently listed under the Endangered Species Act, but this native salmonid is managed as a sensitive species in Oregon and California (Hall et al 1997). The environmental effects of intensive forest

management activities are believed to be factors that led directly to declines in salmonid populations and ultimately their listing under the Endangered Species Act (Independent Multidisciplinary Science Team [IMST] 1999, National Research Council 1996).

### ***Forest Practice Rules***

Because forest management activities can cause environmental effects considered detrimental and linked to declines in populations of fish, government policies and forest practice, regulations have been promulgated and altered over time to govern and regulate forest practices on commercial forestland. These policies and rules have many objectives, but one has always been to minimize, to the extent feasible and practicable, the adverse impacts of forest management activities on aquatic ecosystems and fish. The site-specific forest practice rules are called best management practices (BMPs) and serve as a tactical framework for forest management. A key element of BMPs throughout the Pacific Northwest has been and continues to be unharvested buffers along riparian corridors (Bilby and Wasserman 1989; Chamberlin et al 1991, Bisson et al 1992). The Northwest Forest Plan and the forest practice rules of all western timber producing states mandate such buffer strips. The Oregon Forest Practices Act rules mandating buffer strips were promulgated in 1973 and the latest amendment to these rules implemented in 1994. The Oregon Forest Practices Act rules require fixed-width riparian management areas that exclude management on most fish-bearing streams and other buffer areas along fish-bearing streams where management activities are strictly regulated (Beschta et al 1995).

The listing of the many species and stocks of salmonids in the Pacific Northwest in the early 1990's caused changes to occur in policies and regulations that govern forest management on federal, state, and private forestland. As mentioned previously, the listing of the salmonids, in conjunction with other listings, resulted in dramatic changes in the management philosophy for federal forestland. Federal forestland management is now structured around principles of ecosystem management across large spatial scales and increasingly concentrates on restoration activities (FEMAT 1993). State regulatory agencies and state and private forestland managers also responded to the listings of threatened and endangered salmonids. Some state forestland managers and owners of private forestland developed habitat conservation plans (HCPs) while forestry regulatory agencies in the individual states in the Pacific Northwest reviewed and upgraded their forest practice regulations. The HCPs and the upgraded forest practice rules are intended to outline forest practices that will restore and maintain populations of salmonids while simultaneously allowing forest management. A key provision of these HCPs and forest practice rules is the inclusion of buffer strips along non-fish-bearing streams (Washington Department of Natural Resources 2004, Pacific Lumber Company 1999).

Since 1994 the state of Oregon has reevaluated the forest practice rules as a part of the Governor's Salmon Plan. Two review documents have been produced; "Recovery of wild salmonids in western Oregon forests: Oregon Forest Practices Act rules and the measures in the Oregon plan for salmon and watersheds" authored by the Independent Multidisciplinary Science Team (IMST 1999) and the final report of the Forest Practices Advisory Committee on salmon and watersheds (FPAC). Additional changes in the forest practice rules have been recommended to the Board of Forestry as a result of this process and these documents.

### ***Small, Non-Fish-Bearing, Headwater Streams***

Changes in existing forest practice rules and the HCPs written to protect and restore listed salmonid species on state and private forest land have dedicated effort to appropriate levels of stream protection. Increasingly in discussions regarding forest practices and stream protection, the focus is on small, non-fish-bearing, headwater streams either perennial or intermittent. All forest practice rules and HCPs recognize the importance of fish-bearing streams. A stream classification system is included in all the rules packages and HCPs along with a matrix or list of the appropriate protection measures to assign to each classification of stream. However, in recent HCPs (Pacific Lumber Company 1999), rule revisions (Washington Department of Natural Resources 2004), and in the review of Oregon's forest practice rules (IMST 1999, FPAC), increasing attention is paid to the identification and formal protection of small, non-fish-bearing perennial and intermittent streams.

This attention is warranted because small, non-fish-bearing headwater streams can make up more than 70 per cent of the cumulative length of stream channels in forested mountain watersheds (Benda et al 1992). As mentioned previously, these small, non-fish-bearing streams can be directly affected by forest management activities (Gomi et al 2002); however the value of these small channels and their riparian habitats has rarely been addressed by existing forest management policies and forest practice rules (Beschta and Platts 1986; May and Gresswell 2003). Even though fish are not present in these streams, they still transport the water, sediment, and wood responsible for high quality aquatic habitat from hillslopes downstream to the larger, fish-bearing streams (Naiman et al. 1992; Naiman et al 1998 a, b; May and Gresswell 2003). Further, perennial and intermittent non-fish-bearing streams provide habitat for amphibians and invertebrates. Invertebrates produced in non-fish-bearing headwater streams may be an important food for fish downstream.

In reviewing the need for and levels of protection necessary for small, non-fish-bearing streams, a first step is to review the existing literature on the subject. This can be problematic. First, a preponderance of the existing literature on the effects of forest practices on aquatic habitat and fish are either research on individual stream reaches quantifying the effect of forest practices adjacent to perennial, fish-bearing streams or, in the case of paired watershed studies, are investigations of whole perennial and fish-bearing watersheds. Thus, the spatial scale of the research installation is inappropriate. Also, especially in the case of paired watershed studies, the studies investigating forest practices, hydrology, water quality, and aquatic habitat involve are outdated forest management practices.

These research shortcomings are especially relevant to the management of state and private timberlands. These forests are often the product of intensive forest management practices focused on the production of wood resources. Much of the information pertaining to the environmental effects of forest management activities in these areas is based on forest practices prior to 1990 (Macdonald et al 1991; Hicks et al 1991). Existing research on the effects of forest management practices on water quality, fish, and aquatic habitat was carried out during a time when forest management involved the initial harvest of naturally grown primary forests and the conversion of old growth or mature forest stands to younger age forests. Such forest management

practices required the initial construction of a road system, then the use of large, heavy machinery to harvest and transport large logs. Until the early 1970s, virtually no forest practice rules existed. Current practices have changed since these older studies were conducted and published. Today, smaller machinery harvests smaller, uniform logs from middle-age forests, using an existing road system upgraded or constructed to higher standards under the guidance of a comprehensive set of forest practice rules that include streamside protections.

### *Cumulative Effects*

A key issue involving the current understanding of the impacts of contemporary forest management practices is their effect on aquatic ecosystems at the scale of a complete watershed (IMST 1999). While some forest practice rules are intended to influence management at the watershed scale, for example, rules governing harvest unit size limits and adjacency constraints, most forest practice rules, or BMPs, involve site- or stand-specific practices. The environmental impacts of these site-specific practices have been studied extensively at the scale of an individual site, stand or stream reach. However, the integrated environmental response of these chronic disturbances in space and time on a watershed scale is poorly understood.

The subject of multiple environmental responses to forest management activities at multiple spatial scales falls under the definition of cumulative effects (see Reid 1993). A definition for cumulative effects is (CEQ Guidelines, 40 CFR 1508.7):

“... the impact on the environment which results from the incremental impact of the action when added to other past, present, and reasonably foreseeable future actions. . . Cumulative impacts can result from individually minor but collectively significant actions . . .”

This definition fits the problems encountered when investigating the environmental effects of contemporary forest practices on intensively managed state and private forestland. First, forest management activities are prescribed and applied on a site-specific or individual stand basis. In the current managed forest landscape, they are being applied to forestland previously affected by the initial harvest and in the reasonably foreseeable future should experience additional impacts. The current BMPs are intended to minimize on-site impacts to the extent practicable, but, at the present time when carried out correctly, these impacts are considered to be individually minor. Thus, in the framework of small, non-fish-bearing, headwater streams, the paradigm is that when harvesting occurs adjacent to several of these streams, the individual impacts may be minor, but when they accumulate downstream at a fish-bearing stream they could become significant. This scenario obviously involves multiple spatial and temporal scales, but also involves multiple response variables. For example, a key response variable in the fish-bearing stream is the fish, which are not present upstream and on-site in the non-fish-bearing stream. Multiple response variables must be defined and investigated over multiple spatial and temporal scales to adequately investigate the cumulative effects of contemporary forest practices in a contemporary managed forest landscape.

Thus, the answers to many questions regarding the ecological effects of disturbance, be it natural or forest management related, are scale dependent (White and Picket 1985; Frissell et al

1986; Hicks et al 1991). An integrated, multi-scale approach will be necessary to correctly interpret spatially extensive phenomena (Poff and Allen 1995; Caselle and Warner 1996; Wiley et al 1997). For example, the spatial and temporal patterns of inputs of large wood to streams are important because they influence channel morphology, the storage and routing of water and sediment, and provide complex habitat for many aquatic organisms (May and Gresswell 2003). Or, in some cases, the scale chosen for study may be inappropriate for the life history of the organism chosen for study. For example, many studies have focused on the relationship between physical habitat and anadromous salmonids (Nickelson et al 1992; Reeves et al 1995); however, strong inferences are difficult to develop because anadromous fish spend part of their life in the ocean where they are affected by an array of environmental variables not accounted for, which include commercial harvest (Hicks et al 1991). Freshwater fish, i.e. sculpins and potamodromous coastal cutthroat trout, live in freshwater their entire lives. Thus, they are likely to be more tightly linked to changes in terrestrial habitats than anadromous fishes, but much less effort has been expended to describe these linkages. The relationship between land management and aquatic habitat may be especially relevant for the coastal cutthroat trout because land management activities are among the factors that may have contributed to their decline (Williams and Nehlsen 1997).

Uncertainties concerning the effects of forest management activities on aquatic ecosystems are linked to the methods used in evaluations (Hall and Knight 1981; Hicks et al 1991). Hicks et al (1991) suggested three approaches for improving this type of evaluation: (1) extensive studies that use space-for-time substitutions with numerous watersheds over a short period, (2) intensive long-term studies before and after logging, and (3) design innovations to improve data collection or inferences resulting from the data. In their elemental form, both the intensive and extensive approaches have well-documented shortcomings (Osenberg and Schmitt 1996), and both study designs are strongly affected by the spatial scale of observation in an individual watershed (Hicks et al 1991; Thrush et al 1996). For example, comparison of paired sites close together on the same stream channel may be adequate for assessing local disturbances, but this design is not appropriate for watershed-scale disturbances. For larger, watershed-scale assessments, a basin-wide survey design (Hankin and Reeves 1988) may be more appropriate (Hicks et al 1991). Further, movement may affect the results of any study focused on population abundance as the primary response variable (Gowan et al 1996), even when samples occur throughout the basin. Despite the call for innovative designs, however, no published studies have examined the abundance, distribution, and movement of stream salmonids in relation to forest management.

## Objectives and Research Questions

The overarching objective of this research project is to expand the understanding of physical and biological processes in streams subjected to chronic disturbances in the form of intensive forest management activities. This will be accomplished by studying the environmental effects of contemporary forest practices applied to a privately owned and intensively managed forested watershed in western Oregon. Interpreting the effects of forest management activities on aquatic habitat, and ultimately aquatic organisms, is difficult due to the complexity of the relationships between the physical, chemical, and biological characteristics of the terrestrial, riparian, and aquatic systems, especially at the scale of complete watersheds (White and Picket 1985; Frissell et al 1986; May 1994). Because of these complexities, an integrated research project is required that will extend across the landscape at several spatial scales and will continue for an extended period of time.

To accomplish the overall objective of this project requires that several specific research tasks be undertaken. These specific tasks include understanding the site-specific response of multiple variables to forest management activities along small, non-fish-bearing streams as well as large, main stem, fish-bearing streams. The processes responsible for transporting or propagating these responses to other locations in the watershed also need to be understood. Finally, how these multiple responses to on-site activities coalesce in space and time and ultimately affect downstream variables, most importantly fish, needs to be understood. The specific objectives are to:

- Determine the on-site effects of contemporary forest management practices carried out adjacent to small, non-fish-bearing, headwater streams on water quality, aquatic habitat and aquatic biota.
- Determine the on-site effects of contemporary forest management practices carried out adjacent to large, fish-bearing, main stem streams on water quality, aquatic habitat and aquatic biota.
- Determine the cumulative off-site effects of contemporary forest management practices carried out adjacent to four small, non-fish-bearing, headwater streams on water quality, aquatic habitat, aquatic biota, and fish downstream in a large, fish-bearing, main stem stream.
- Identify the processes that propagate environmental effects downstream from non-fish-bearing headwater streams to fish-bearing main stem streams and to quantify the relative magnitude of these processes.

To accomplish these objectives, critical questions pertaining to the chronic disturbance regime imposed by contemporary forest practices need to be answered. A fundamental question is how forest management activities in small, non-fish-bearing, headwaters streams affect fish behavior and assemblages throughout a stream network. Changes in water quality, habitat quality, or food supply should affect fish in a dynamic way and these spatially and temporally



variable elements will be incorporated into the research plan by addressing the following research questions:

- How do forest practices affect changes in physical and biological characteristics of small tributary streams without fish?
- How do the changes in physical and biological characteristics of tributaries without fish influence the quality of aquatic habitat in other parts of the stream network?
- Do forest practices adjacent to non-fish-bearing streams change food availability in fish-bearing streams and if so how does that affect the behavior or growth of aquatic organisms in those streams?
- How do seasonal hydrologic changes in non-fish-bearing streams affect the distributions of aquatic organisms in fish-bearing streams because of food supply of food or habitat quality?
- Does the abundance or diversity of aquatic organisms decline in response to changed habitat quality, or do organisms relocate to areas where habitat quality remains high?

## **Research Plan**

The experimental design for this project is a nested, paired watershed study. Paired watershed studies are a proven and robust experimental technique long used to investigate the environmental effects of land use. Paired watershed studies are an integral part of understanding the environmental effects of forest management activities, especially timber harvest. The history of the use of paired watershed studies to evaluate the effect of forestry on water yield, streamflow, and water quality goes back almost a century and is long and varied.

Paired watershed studies have also been used to investigate the effects of forestry on fish and aquatic habitat, but the history and literature is less robust. The Alsea Watershed Study is a landmark paired watershed study that integrated research on the effects of forestry on hydrology and water quality as well as aquatic habitat and fish (Hall and Lantz 1969, Moring and Lantz 1975, Moring 1975). Carnation Creek on Vancouver Island in British Columbia was not a paired watershed study, but it was a watershed-scale investigation of the effects of forest practices on hydrology, water quality, aquatic habitat, and fish (Hartman 1982; Chamberlin 1988).

### *The research site*

Hinkle Creek is located 25 miles northeast of Roseburg, Oregon in the foothills of the Cascades. The watershed is almost entirely owned by Roseburg Forest Products, which intensively manages the watershed for the production of solid wood products from a stand of 55-year old, harvest-regenerated Douglas fir. The forest stand is typical of the kind of forests and

forestland currently owned and managed by private, industrial, timberland owners in western Oregon. Thus, it represents an excellent place to test the efficacy of contemporary forest practices on water quality.

The Hinkle Creek Paired Watershed Study is a nested, paired watershed study. The main study watershed has an area of 5,000 acres evenly divided into the North and South Forks of Hinkle Creek. Roseburg Forest Products has set the North Fork aside for 10 years to act as a control. The South Fork will serve as the treated watershed in the paired watershed study. Within the North Fork and South Fork watersheds, six headwater watersheds, or small watersheds drained by perennial non-fish-bearing streams, will also be established as a paired watershed study. Two of these watersheds are in the North Fork and will act as controls. Four small watersheds are located in the South Fork and will be treated. Hinkle Creek is a tributary to Calapooya Creek, which drains into the Umqua River near Oakland, Oregon downstream of the confluence of the North and South Forks of the Umqua River.

The geology of the watersheds is basalt from the Siletz volcanics formation. The soils are Typic Palehumults or Typic Haplohumults deep and well drained with loamy textures ranging from extremely gravelly to silty clay. The forest is predominately Douglas-fir with some western hemlock. The understory is composed of swordfern, rhododendron, vine maple, salal, Oregon grape, and red huckleberry. Mean annual precipitation ranges from 1,400 mm at the mouth of the watershed up to 1,900 mm at the higher elevation.

Hinkle Creek was chosen as the site of this study because:

- The landowner allowed it to take place and encouraged the project.
- The watershed is representative of the type of commercial forestland that will be managed intensively by the timber industry into the foreseeable future. The forest consists of a harvest-regenerated stand of small, uniformed size trees, primarily Douglas-fir, and the watershed has an existing road system in place.
- Active manipulation of the forest stand will take place. Roseburg Forest Products has a harvest plan prepared for the watershed that spans the life of the project and the harvesting will be carried out using accepted, contemporary, state-of-the-art harvesting methods. For the harvest plan and the timber harvesting, RFP will meet or exceed all current and expected forest practice rules.
- The harvest units will be aggressively and intensively managed. RFP will treat competing vegetation in the harvested areas using herbicides applied, primarily, by air and will reforest the harvested areas by hand planting high-quality growing stock. If the project lasts long enough, stand density will be managed by precommercial thinning.
- Considerable and growing physical infrastructure is in place and a critical mass of data has been collected. The physical infrastructure includes: fish traps on the North and South Forks at the confluence, discharge measurement by the U.S. Geologic Survey at the confluence of the North and South Forks, tagging of approximately 1,000 coastal

cutthroat trout with passive integrated transponder (PIT) tags, siting of 13 permanent antenna to monitor the movement of the tagged fish, and placement of six Montana flumes to measure discharge at small, non-fish-bearing, headwater streams, eight turbidity threshold system (TTS)) stations to measure suspended sediment, 27 temperature sensors, two rain gauges, and a micrometeorological tower. Three summers of stream temperature data, three summers of fish abundance data, two years of fish movement data, one winter of discharge and suspended sediment data, and one year of stream chemistry data have been collected to date.

Thus, Hinkle Creek is a place that is representative of private industrial forestland that will be intensively managed in the coming decade. The combination of a growing physical infrastructure, the guarantee of active manipulation, and the willingness of the landowner to participate have combined to make Hinkle Creek an excellent place to install this research project.

### ***Research Approach***

The experimental design for Hinkle Creek project is a nested, paired watershed study installed at two spatial scales. The North and South Forks of Hinkle Creek are the study watersheds at the large spatial scale. They are fourth-order watersheds with areas of 873 and 1,060 hectares, respectively. The North Fork is the control watershed and the South Fork is the treatment watershed. Six small, headwater watersheds were selected as the study watersheds at the small spatial scale. The streams at the mouths of these small study watersheds are all perennial, non-fish-bearing streams. The watersheds range in size from 35 to 147 hectares and include a large first-order watershed, four second-order watersheds, and a small third-order watershed. The four watersheds in the South Fork of Hinkle Creek will be treated and the remaining two watersheds in the North Fork will be control watersheds.

In addition to multiple spatial scales, the project is an integrated study that will investigate multiple, response variables. Two response variables are being measured at only the scale of the fourth-order watersheds – anadromous salmonids and coastal cutthroat trout. While winter steelhead are the anadromous salmonid with the highest likelihood of making it to the study watersheds, none of these fish have been observed in the North or South Forks of Hinkle Creek to date. Coastal cutthroat trout are present in the main stems of the North and South Fork and up most of the major tributaries. The extent of fish is shown on the map in Figure 2.

The most common amphibian in Hinkle Creek is the Pacific giant salamander found throughout the drainage from the confluence of the North and South Forks up into the headwaters well beyond the end of fish. Pacific giant salamanders can be a predator to invertebrates and fish and may also be prey to both groups (Parker 1993, 1994). They use aquatic and terrestrial habitats that multiply the potential impacts of timber harvest. Thus, other than fish, all the response variables will be measured throughout both watersheds at all spatial scales. In addition to the salamanders, these response variables include aquatic invertebrates, discharge, suspended sediment, stream temperature, and water chemistry. As additional watersheds are included in the WRC, other stream amphibians will be included.

In the Hinkle Creek Paired Watershed Study, the treatments will be the application of contemporary intensive forest management activities. These activities include timber harvest and the subsequent activities needed to culture the next crop, which include reforestation, site preparation, and control of competing vegetation. Control of stand density through precommercial thinning may be included if the project lasts long enough, but that activity is not foreseen during the planned life of the project at this time.

Two entries to harvest timber are planned for the South Fork of Hinkle Creek during the life of the project, one for the summer of 2005 and the second for the summer of 2007. Four harvest units are planned for the first entry all located upstream of the fish/no fish barriers. Thus, harvest in the initial entry will take place adjacent to small, non-fish-bearing, headwater streams only. Four harvest units are also planned for the 2007 entry and all four will be located adjacent to fish-bearing streams either the main stem or the tributaries. The size and location of the harvest units are the result of RFP's regular harvest planning process. Constraints on the harvest units and their location are a part of the forest practice rules and include size limitations, buffer restrictions between harvest units, and green up constraints. Consideration was given to applying artificial restrictions to reduce the variability in treatment sizes or effects on streams, but these considerations were eventually discarded. Thus, the measured response will be a response to the true application of contemporary forest practice rules, which includes rudimentary considerations for planning at a watershed or landscape scale. A map showing the two harvest entries is shown in Figure 4.

Discharge, suspended sediment, stream chemistry, and temperature data will be collected at the flume locations at each of the small, non-fish-bearing study watersheds and at the North and South Forks of Hinkle Creek at the confluence. Stream temperature will also be collected at numerous locations throughout both watersheds (see map, Figure 3). A number of response variables, including storm peak flows, storm volumes, storm sediment yield, and maximum stream temperature, will be calculated from the raw data. Calibration relationships between control and treatment watersheds will be developed for the time period before treatment begins. Calibration relationships will be standard linear models where the value of response variables in the treatment watersheds will be predicted as a function of values in the control watersheds. After treatment, a treatment effect will be determined by comparing the value of actual response variables with the value of predicted response variables using the calibration equations and values of the response variables from the control watersheds. Those response variables that include streamflow, sediment yield, and stream temperature, will be dependent variables for the analysis of the effects of forestry on physical parameters; however, they will become independent variable for the analysis of the effects of forestry on the aquatic biota. Downstream propagation of stream temperature will be evaluated using energy and water budgets. Downstream propagation of sediment effects will be evaluated using a sediment budget.

The cumulative effects of forest management activities on aquatic biota will be evaluated using a systems approach that combines watershed-scale and in-stream physical and biological variables, with the distribution and abundance of fish and aquatic invertebrates. Within-basin variation in physiography, climate, and land management will be assessed by examining the entire stream system at multiple levels in a spatial hierarchy (e.g. network, stream, segment, reach, and channel unit). The distribution, movement, and growth of coastal cutthroat trout

(*Oncorhynchus clarki clarki*) and anadromous steelhead (*Oncorhynchus mykiss*) will be measured through mark-recapture and tracking studies. These two fish species have different life histories and habitat requirements and may be affected in different ways by forest management (e.g., coastal cutthroat trout in Hinkle Creek may be nonmigratory, potamodromous, anadromous, or amphidromous, but all steelhead are anadromous).

The abundance and movements of instream aquatic biota will be estimated using varied approaches. Fish and amphibian abundance in both watersheds will be estimated by electrofishing both basins annually. Changes in distribution of fish will be evaluated by monitoring fish implanted with passive integrated transponder tags at stationary sites and mobile tracking units (Figure 2). Instream invertebrates will be sampled by capturing instream, emerging, and terrestrial invertebrates (litter inputs) that are indicators of riparian and aquatic habitat quality and are critical components of the diet of fish. The importance of aquatic and terrestrial invertebrates and amphibians to the diet of fish prior to timber harvest will be compared in headwater streams, where there are no fish, and downstream sites with only coastal cutthroat trout. The cumulative importance of these dynamics will be assessed before and after timber harvest.

Estimates of the abundance of fish and amphibians, by age class, and physical characteristics of aquatic habitat will be used to characterize habitat condition. To detect changes in fish and amphibian distribution associated with forest management activities in the watershed, relationships between fish and amphibians and their habitat will be examined at the spatial scales of geomorphic reach, stream segment, and watershed. The distribution and movement patterns of fish and amphibians (e.g., timing, direction, and distance) at fine spatial scales will be compared with substrate composition, water temperature, food availability, and geomorphic structure at the scale of stream reaches. PIT tag technology will be used to examine seasonal and annual changes in fish/habitat relationships at multiple spatial scales. Pacific giant salamanders tend to be more site-philopatric so their movements will not be examined directly but rather reach-specific abundance and condition will be the focus using the electroshocking data.

Continued sampling of fish, amphibians, and aquatic invertebrates provides the opportunity to incorporate natural variation in the project analysis. Beginning with the fish census during the summers of 2001 and 2002, the terrestrial and aquatic habitat conditions for coastal cutthroat trout demographics can be evaluated for four years prior to timber harvest and four years following harvest. Post-harvest analysis of amphibians, aquatic macroinvertebrates and steelhead will also encompass a four-year period, but pre-harvest sampling will be limited to three years for macroinvertebrates (beginning in 2002) and two years for steelhead and amphibians.

Analyses of aquatic biota data will be conducted hierarchically at three spatial scales. Initial analysis will be conducted at the watershed scale with the goal of identifying the spatial scale within each study watershed (North Fork and South Fork subbasins) that provides the most information about the distribution of aquatic biota prior to timber harvest. Baseline information on pretreatment habitat conditions and spatial patterns of aquatic biota will provide a basis for comparison as the study progresses. Preliminary data analysis will focus on univariate data, but

ultimately the focus will be on multivariate relationships among fish species, amphibians, invertebrates and habitat variables at habitat-unit, reach, and segment scales (McCune and Grace 2002). A variety of parametric and nonparametric methods will be used to differentiate among habitat classes within hierarchical groups. Relative fish abundance and physical characteristics of instream habitat will be used to determine the usefulness of these relationships to evaluate differences in habitat preference between harvested and unharvested portions of the Hinkle Creek watershed. Relationships between fish, amphibians, invertebrates and habitat will be extended to stream segment and watershed scales in an effort to relate fish habitat to management activities. Logistic regression and nonparametric techniques will be used in an effort to define aquatic biota and habitat relationships at the various spatial scales (Hosmer and Lemeshow 1989; Trexler and Travis 1993). Multivariate, repeated-measures analysis of variance will be used to test for differences in response variables among watersheds and over time.

The second level of analysis will explore watersheds in individual watershed classes (as defined in the initial stream classification). Principal components analysis (PCA) will identify watershed-scale characteristics most useful to discriminate factors that affect fish distribution (e.g., physical watershed characteristics, instream habitat characteristics, invertebrate distribution and influences of land management). Correlation matrices of physical variables will be used to reduce effects of scaling and unequal variances among variables. After preliminary analysis, variables that display low component loadings will be eliminated, and the remaining variables will be reanalyzed using varimax rotation (Tabachnick and Fidell 1989). This analytical procedure will be repeated for variables that can be used to describe fish populations (e.g., age structure, growth, and abundance). Relationships between watershed variables and fauna distribution and abundance will be investigated further with ecological response surface analysis (Bartlein et al 1986). Predictor variables will be selected from the set of watershed variables that displays the highest component loadings for each of the first three components of the PCA (Gresswell et al 1997). Specific predictor variables will be chosen on the basis of relative component loading, ease of measurement, and accuracy and precision of variable measurement.

A third level of analysis will differentiate patterns of fish, amphibians, and invertebrate abundance in treatment and control watersheds. Stream segment, stream reach, and channel-unit classes will be analyzed as discrete entities and ANOVA will be used to identify statistical differences in fish or invertebrate distribution and abundance that may exist among strata and between the two study watersheds in preliminary comparisons. Subsequent comparisons will apply repeated measures ANOVA to identify statistically significant temporal trends in fish abundance (Ramsey and Schafer 1997).

Geographic analysis of fish movement and spatial patterns in fish distribution will focus on the identification of geomorphically distinct peaks in fish distribution (Angermeier et al 2002). Spatial overlays of fish distribution and stream habitat data on three-dimensional maps generated from digital elevation models will facilitate analysis of patterns of fish abundance and channel morphology in a landscape context. Channel gradient profiles will be developed for comparison with field measurements at the channel-unit scale. Landscape metrics (e.g., valley form, aspect, slope, and upslope disturbance potential) and channel gradient profiles will be used as spatially explicit explanatory variables in statistical models of habitat relationships for fish

and amphibians. Spatial explicit maps of geology, soils, forest stand characteristics, road density, and landslide potential will be entered into the GIS and will be used to investigate the relationship between management activities and fish distribution. Additional analysis of spatial heterogeneity and the dominant scales of variation in fish and amphibian distribution will be conducted with geostatistics to identify how timber harvest may affect the spatial structure, or “patchiness”, of fish distribution in the stream network (Rossi et al 1992).

### ***Sampling methods***

*Hydrology* – To quantify the effects of timber harvest and subsequent silvicultural activities on the hydrology of the managed watersheds, streamflow will be measured on six headwater streams and two 4<sup>th</sup>-order streams. Streamflow at the confluence of the North and South Forks of Hinkle Creek, the two 4<sup>th</sup>-order streams, is measured by the U. S. Geological Survey (USGS). The USGS has installed instrumentation that measures and records stream water level or ‘stage’ at the mouth of both streams. Values of stage are recorded using data-loggers housed on-site in instrument shelters and also broadcast to the USGS offices in Medford where they are displayed in real time on the USGS website (<http://or.waterdata.usgs.gov/nwis>). The USGS is also responsible for creating and maintaining the stage/discharge rating curve for the stream gauging stations. Throughout the year at a variety and range of streamflows, the discharge in the North and South Forks of Hinkle Creek is physically measured and these values are correlated with the value of stage at the time the discharge measurement was taken. In this manner, values of stage can be converted to discharge. This conversion also occurs in real time and the current discharge at both streams is shown on the web page along with the value of stage. The USGS is responsible for collecting and maintaining the water level database as well as creating and maintaining an appropriate stage versus discharge rating curve. The raw data for stage, the stage/discharge rating curves, the data used to create the curves, and the discharge data are available from the USGS.

Streamflow is measured at the six, small, headwater streams using Montana flumes. Montana flumes are the upstream half of Parshall flumes and are used in situations when flooding of the outlet of the flume is not likely to occur. Flumes are valuable in this type of work because they readily pass sediment and organic debris so regular maintenance of the structure is not needed and they are pre-calibrated structures. Because they are pre-calibrated structures development of stage/discharge rating curves is unnecessary and once stage in the structure is known, discharge can be calculated using a pre-determined relationship. Water level is measured in the Montana flumes using a pressure transducer and the water level data is stored in a data logger located on-site in an instrument shelter.

Streamflow is also measured at nine locations along the main stem of both forks. Water level is measured and recorded using capacitance rods equipped with data loggers. The capacitance rods are installed in conjunction with the main PIT tag antennas or ‘gate readers’ in the fish-bearing main stems of the streams. Individual stage/discharge rating curves have been developed for each capacitance rod/gate reader location. The location of the capacitance rods is shown in Figure 3.

Precipitation, solar radiation, air temperature, relative humidity, and wind speed are measured and recorded at micrometeorological tower located at the approximate geographic centroid of the watersheds. Precipitation intensity is also measured at a rain gauge near the Roseburg Forest Products (RFP) boundary (not shown on map).

*Water Quality* – One of the primary water quality parameters of concern is suspended sediment discharge. Suspended sediment is measured using the turbidity threshold system (TTS) developed by the Redwood Sciences Laboratory of the Pacific Southwest Forest and Range Experiment Station (USFS Redwood Sciences Lab 2004). Suspended sediment at the six Montana flumes on the small, headwater watersheds and at the mouths of the North and South Forks of Hinkle Creek is first measured and recorded by a continuous record of turbidity using a turbidimeter suspended into the middle of the stream using a boom. Values of turbidity are stored in the data logger in the instrument shed. An intake to an ISCO water sampler is also connected to the boom and suspended in the stream. Water samples are taken by the ISCO and stored for later analysis of suspended sediment concentration. Water samples are taken at a time determined by a software program in the data logger that uses threshold values of discharge and turbidity to determine when to trigger the ISCO to take a water sample. Because a probabilistic component exists to the timing of water sample collection, the water samples are collected randomly. Suspended sediment concentration is correlated with the in-stream turbidity value when the water sample was collected to establish a suspended sediment/turbidity relationship. With this relationship, the continuous record of turbidity can be used to generate a continuous record of suspended sediment concentration. Suspended sediment/turbidity relationships are established on a storm-by-storm basis to minimize the variability in the relationship and optimize its validity. Water samples are taken during every storm and suspended sediment/turbidity relationships are constantly updated.

*Stream temperature* – A continuous record of stream temperature is collected at a minimum of 27 locations currently. The temperature is measured using commercially available thermistors with data loggers. Currently, VEMCO's are being used but other brands are available and the technology is constantly being upgraded, thus almost certainly other brands will be used before the end of the project. The thermistors are located in the streams in the spring, most often during May, and retrieved in the fall during late September and October. The sampling frequency is set for 45 minutes. The thermistors are visited regularly during the summer to insure they are functioning and they are accurate. The locations of the thermistors are shown in Figure 3.

*Stream Chemistry* – Water samples will be collected monthly at the eight locations where stream discharge is measured, which includes the six headwater streams and the main stems at the confluence of the North and South Forks of Hinkle Creek. Grab samples will be obtained using the protocol described by the Environmental Protection Agency for water sampling. Other sampling locations may be added as the results from the different streams become available. The location of the sample collection will be consistently the same and correspond to the gauging stations in the streams. The samples will be collected in a one-liter nalgene bottle that is acid washed, allowed to dry, and capped. The sample bottle will be rinsed three times with stream water before the sample is collected. Four samples will be taken per site.



The samples will be iced and placed in coolers and transported immediately to the Cooperative Chemical Analytical Laboratory at OSU for analysis. They will be stored in the dark at 4°C. Analysis will include total nitrogen (N) and phosphorus (P), base cations (Ca, K, Mg, Na), dissolved inorganic carbon (DIC), dissolved organic N (DIN), and pH. The stream chemistry data will enable comparisons with other studies in the Pacific Northwest and in other regions (Sollins et al 1980; Triska et al 1984; Swank and Vose 1997; Vanderbilt et al 2003).

*Soil Nutrients* – Soil samples will be collected in riparian zones and upslope areas corresponding with the various watersheds. Soil cores will be collected at sites selected using stratified random sampling. Representative soil pits will be dug for soil descriptions and parent materials. Samples will be placed in plastic bags and sealed. The sealed bags of soil will be transported to Corvallis where bulk density, porosity, moisture content, and hydraulic conductivity will be determined. The samples will then be sent to the Central Analytical Chemical Laboratory at OSU in the Crop and Soils Department for determination of soil carbon (C), nitrogen (N), phosphorus (P), sulfur (S), base cations (Ca, Mg, K, Na), and cation exchange capacity (CEC). The availability of N and P will also be measured. Soil baseline data for Hinkle Creek will be compared with data from other forest studies in the Pacific Northwest and with other regions (Knoepp and Swank 1995; Cromack et al 1999; Johnson and Curtis 2001; Rothe et al 2002).

*Instream Habitat Evaluation* - Hinkle Creek will be classified hierarchically into segments, geomorphic reaches, and channel units (e.g., pools and riffles). Stream segments will be defined as portions of a stream system that flow through a single bedrock type and are bound by tributary junctions or major waterfalls (Frissell et al. 1986). Prior to the initial survey of a basin, major stream segments will be identified in existing databases, topographic and geologic maps, aerial photographs, and by field reconnaissance. These stream segments will be used as the initial stratification for sampling. Stream gradient will be measured in the field (channel-unit scale) with a clinometer and it will also be measured in a geographical information system (GIS) using 10-m digital elevation models (DEM). Channel slope, bedrock geology, valley sideslope, floodplain morphology, soil type, and vegetation will be determined for each stream segment and for the watershed.

Geomorphic reaches in each segment will be classified in the field using procedures developed by Montgomery and Buffington (1997). For each stream reach, the criteria of Bisson et al (1982) will be used to delineate pools, riffles, and cascades. Extensive inventories of instream habitat will be conducted in the fish-bearing portions of the North and South Forks of Hinkle Creek during summer low flow when fish movement is limited and carrying capacity is limited by stream temperature and flow. Physical habitat variables, including the length, maximum depth, and wetted width of channels, dominant and subdominant substrate, channel type, valley segment type, and woody debris loading will be estimated or measured for all sampled habitat units. Visual estimates of the length and width of channel units will be corrected for observer bias with a subset of verified field measurements. An acoustic hypsometer and a global positioning system (GPS) will be used to increase the spatial accuracy of stream habitat surveys, and for soil pit sampling locations.

To evaluate year-to-year variation in the quality and composition of aquatic habitat quality, the study streams will be surveyed annually for four years before and four years following timber harvest. These data, in conjunction with discharge, sediment, and temperature data, will provide the template for potential changes in abundance or distribution of aquatic biota prior to timber and after harvest has occurred.

*Aquatic biota distribution and movement* - The distribution and abundance of salmonids and Pacific giant salamanders will be estimated each year during August and September with single-pass electrofishing throughout the North and South Forks of Hinkle Creek. Electroshocking at fine spatial resolution will be conducted in 12 kilometers of both streams to examine patchiness in the distribution of fish and salamanders. Single-pass electrofishing without blocknets will be used because it minimizes the stress of multiple-pass removal methods (Jones and Stockwell 1995). Relative abundance of salmonids and salamanders will be assessed in all pools and cascades, and presence/absence will be recorded for lamprey, sculpin, tailed frogs, and crayfish. The condition of a subset of salamanders will be assessed based on length and mass.

After collection, fish will be anesthetized in a solution of clove oil (Anderson et al 1997, Keene et al 1998). Salmonids will be identified to species, measured (fork length to  $\pm 1$  mm), and weighed ( $\pm 0.1$  g). Steelhead and cutthroat trout less than 80 mm will be unidentified trout. Scale samples will be collected from salmonids in each 10-mm length class between 80 and 200 mm for age and growth determination. Additional scales will be collected from 10 fish less than 80 mm and for 10 fish greater than 200 mm. Fish stomach contents be collected in sites where benthic invertebrates have been collected; 20 trout per site will be sampled. Using a lavage procedure, a fine stream of water will be squirted into the mouth of each fish and the contents of the stomach from each fish will be preserved in 75 per cent ethanol. The fish that die will be dissected, the otoliths will be collected, and age will be determined from otoliths to compare with the age obtained from scale analysis.

PIT tags will be implanted in all coastal cutthroat trout and juvenile steelhead greater than 100 mm fork length during the annual electrofishing surveys. Stationary (gate reader stations) and portable (mobile tracking units) remote tag-reading systems will monitor the movement of individual fish. A network of receiver antennas will be placed throughout the watershed (Figure 2) so that the movement of PIT-tagged fish can be monitored continuously. Mobile tracking units will be used to locate tagged individuals and obtain seasonal synoptic distribution data. Tagged fish recaptured during annual electrofishing surveys will be weighed and measured to assess growth rate and condition.

Aquatic macroinvertebrates will be sampled annually at 12 reaches in the North Fork and the South Fork during summer low flow in the first and second years. Study reaches will be paired where fish are present and absent so that aquatic invertebrate diversity and abundance can be compared among sites (Figure 2). Samples will be taken in summer, fall, winter, and spring in subsequent years. Additional sites will be added to assess longitudinal distributions along two tributaries, particularly downstream of harvest units. Six benthic samples/reach/season will be taken with Surber samplers (500 micron mesh); sampling sites within each study reach will be positioned randomly (Li et al 2001).

Availability of invertebrates for fish diet also requires sampling for other life stages and terrestrial sources of prey. Four emergent traps/study reach will be set for 1-2 weeks per season to collect emerging stream insects beginning in year three. Eight pan traps/study reach/season will be set for two 24-hour intervals to collect insects falling or flying into the stream. Leaf packs will be set out for three-four weeks to collect invertebrates attracted to decomposing leaves in the autumn. All invertebrates will be sieved, stored in 70 per cent ethanol, and identified under laboratory microscopes at OSU. The resolutions of identification will depend on the sampling source; benthic samples will be identified to genus level and organisms in the emergence samples will be identified to species where possible. Invertebrate input from litterfall will be identified to the family level.

*Geographic information system* – Patterns of distribution and movement of fishes over the multiple-year study period will be monitored using a GIS able to georeference and co-register the different spatial and temporal data types:

- extensive habitat and fish distribution surveys,
- fixed-station PIT-tag reader detections of fish movement, and
- mobile tracking relocations of fish with PIT tags.

Before fish and habitat data were collected, colored survey markers were attached to trees at approximately 15-meter intervals along the entire length of the fish-bearing portions of the study streams. These markers serve as spatial reference points and all three types of data are registered to them to insure that field observations of fish and aquatic habitat are spatially compatible throughout the study. A subset of the survey markers will be georeferenced using a mapping-grade Trimble GPS. These benchmark locations will be used in the GIS to associate field observations with locations on a map. Separate data tables describing habitat characteristics, fish distribution, fixed-antenna detections, and mobile tracking relocations will all be linked in a spatial database through a common linear routing system that relates any given field observation to a distance from a colored survey marker anywhere in the stream network.

Dynamic segmentation in Arc/Info GIS will be used to create maps of stream survey data in each watershed. Landmarks, such as bridge crossings, tributary junctions, and GPS coordinates collected in the field, will calibrate digital hydrography layers (USGS 1:24,000 topographic maps) to measurements of stream channel length (Jones et al 2001). Consecutively numbered habitat units and associated attributes, including habitat dimensions, wood, substrate, and fish numbers, will then be joined to the calibrated stream network in the GIS.

## **Timeline**

### *Past Activities*

The Hinkle Creek Paired Watershed Project was informally initiated in August 2001. The agreement with Roseburg Forest Products is that the project, in its current form, will last 10 years, nominally, until August 2011.

During the summer of 2001, stream temperature data was collected and a census of the fish carried out in the study watersheds. In the spring of 2002, the Oregon Watershed Enhancement Board (OWEB) awarded a \$250,000 grant to the project; however it took over a year to gain access to the funds. During the summer of 2002, stream temperature data was again collected and a census of the fish again carried out; however this time PIT tags were implanted in approximately 600 fish. Fish traps were constructed at the confluence of the North and South Forks of Hinkle Creek. During the summer, a research cooperative was chartered at OSU giving the project an administrative home. The Watersheds Research Cooperative became reality in December 2002.

In 2003, with access to the OWEB grant, the balance of the research activities were initiated. Accomplishments included:

- Permanent PIT tag readers or 'gates' installed throughout the study watersheds,
- Temperature data collected,
- USGS initiated stream gauging at the North and South Forks of Hinkle Creek,
- A census of the fish carried out and PIT tags implanted in the in growth,
- Kermit Cromack received a grant from the Fish & Wildlife Managed Forest Program at OSU and started collecting stream chemistry data.
- Montana flumes were ordered and installed in the six, small, headwater streams,
- Turbidity threshold system (TTS) hardware was ordered and installed at all eight stream gauging stations, and went on-line by the onset of winter rains.

### *Future Activities*

The first harvest entry is planned for summer 2005. Four units will be harvested above fish/no-fish barriers along perennial and intermittent non-fish-bearing streams.

A second harvest entry is planned for 2007. Four units will again be harvested and this time they will be adjacent to perennial, fish-bearing streams, either the main stem of South Fork Hinkle Creek or its main tributaries.

Units tentatively are scheduled for harvest in 2009. The location of these units is interspersed with the 2005 harvest units in the headwaters above the flumes. No decisions or plans have been made regarding these harvest units or plans for the project at this time

Funding for the stream chemistry project under the direction of Dr. Kermit Cromack is scheduled to run out in FY '05. Plans are underway to secure funding for a follow-up project on stream chemistry to continue Dr. Cromack's data collection into the post-harvest years. Funding for the amphibian portion of this project lead by John Hayes and Michael Adams is scheduled to run out in FY '09. All other programs are scheduled to continue until 2011. The project will likely not end abruptly in 2011 rather it will probably be extended. The manner of the extension will have to be negotiated and then the program curtailed in an orderly manner. Discussions regarding how this will take place have not commenced.

## Budgets

Budget projected for FY '05

### Programmatic Budget

Program Administration	\$140,000
Hydrology & Water Quality	228,500
Fisheries	276,000
Aquatic Invertebrates	59,000
Stream Chemistry	44,000
Amphibians	40,000
Total	\$ 787,500
Overhead (15%)	118,125
Grand Total	\$905,625

### Categorical Budget

Personnel	
Principal Investigators	\$50,000
Research Assistants	192,500
Field Technicians	159,000
Graduate Students	130,000
Clerical & Support	110,000
Laboratory Support	62,000
Total Personnel	\$703,500
Travel	\$41,000
Capital	29,000
Supplies & Services	14,000
Total	\$787,500
Overhead (15%)	118,125
Grand Total	\$905,625

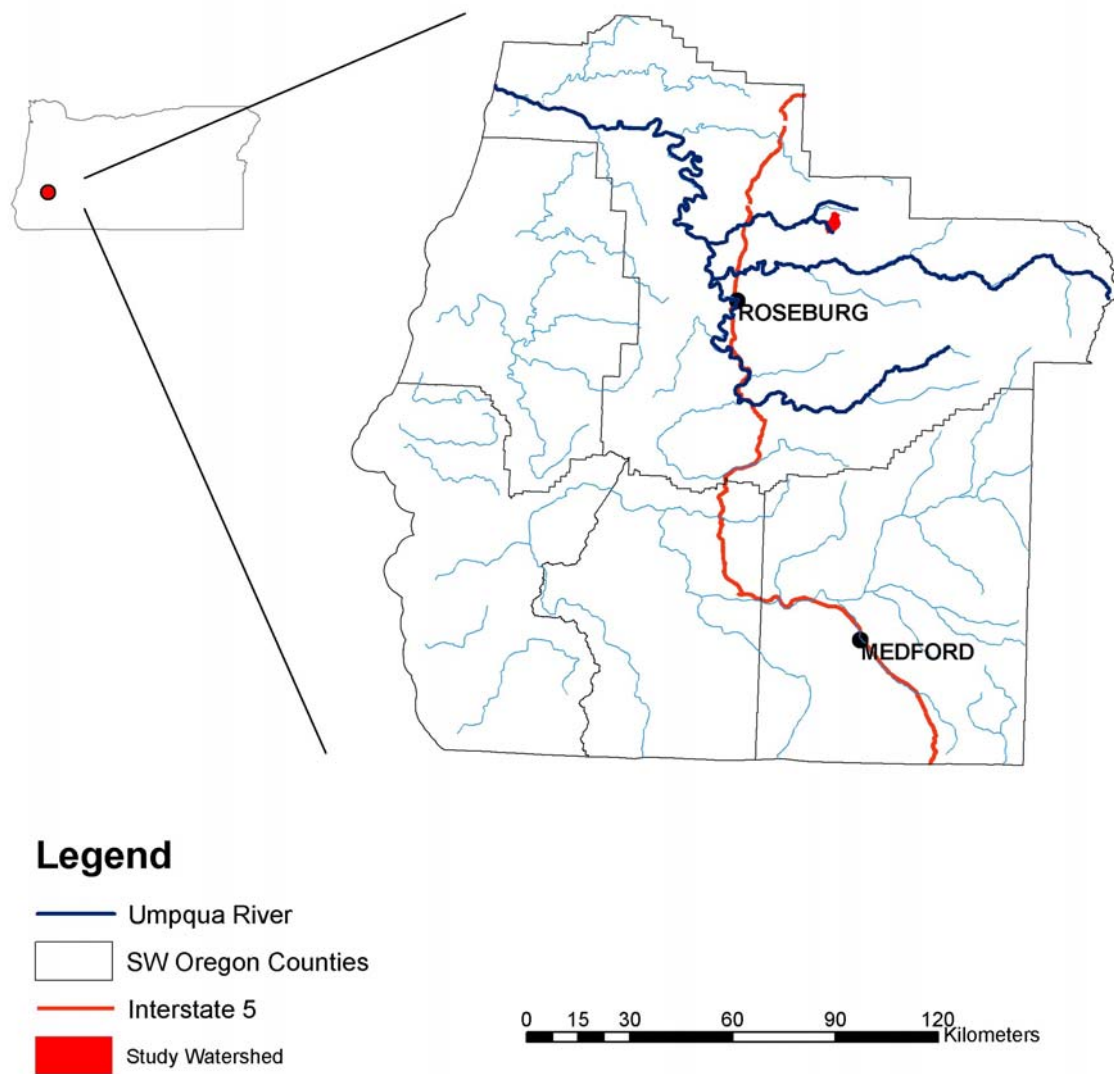


Figure 1: A vicinity map of the Hinkle Creek study watersheds.

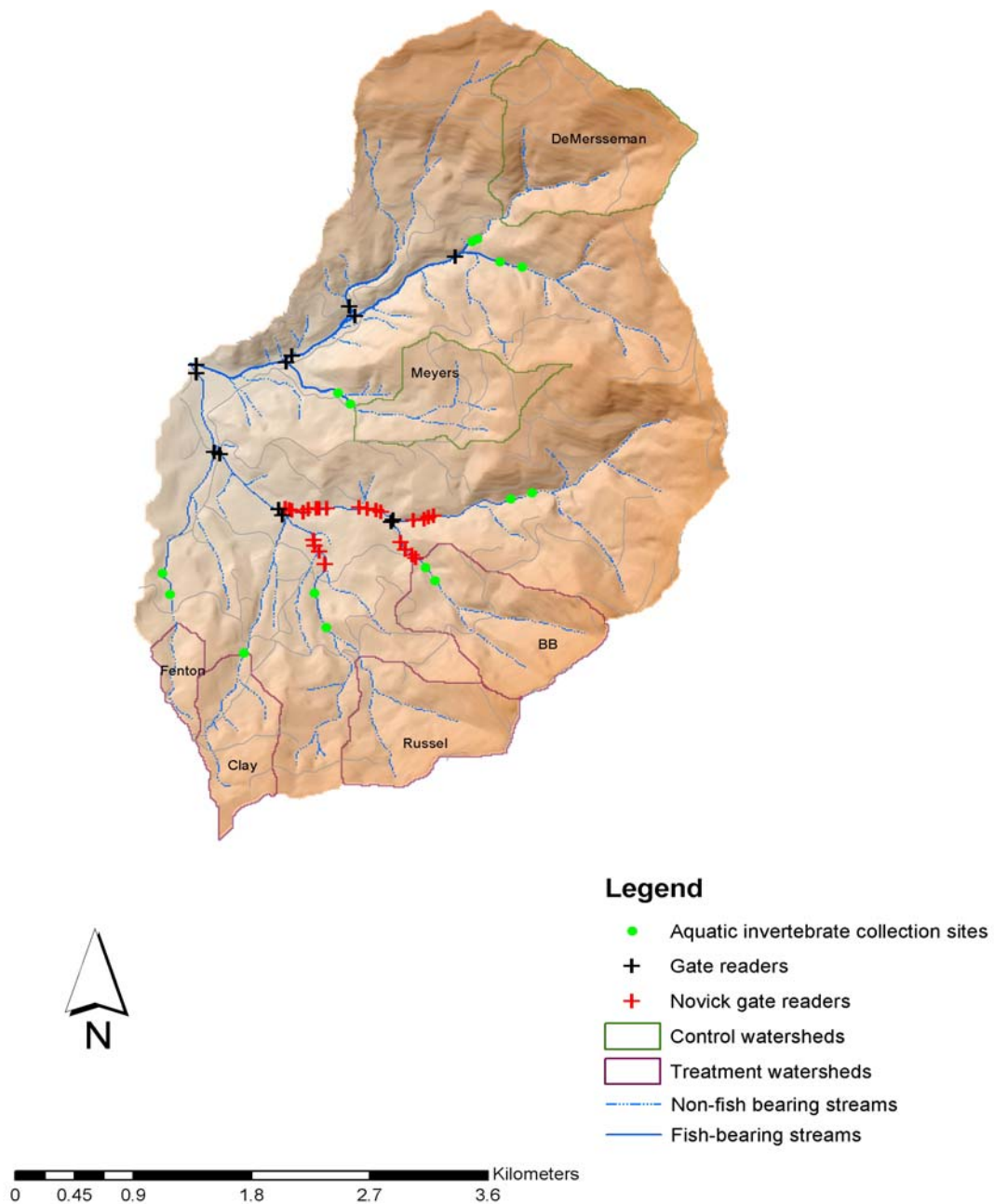


Figure 2: A map of the Hinkle Creek study watersheds showing the location of the fish-bearing and non-fish-bearing streams, the location of the small watersheds, and the location of the fisheries, aquatic invertebrate, and amphibian monitoring infrastructure and location.



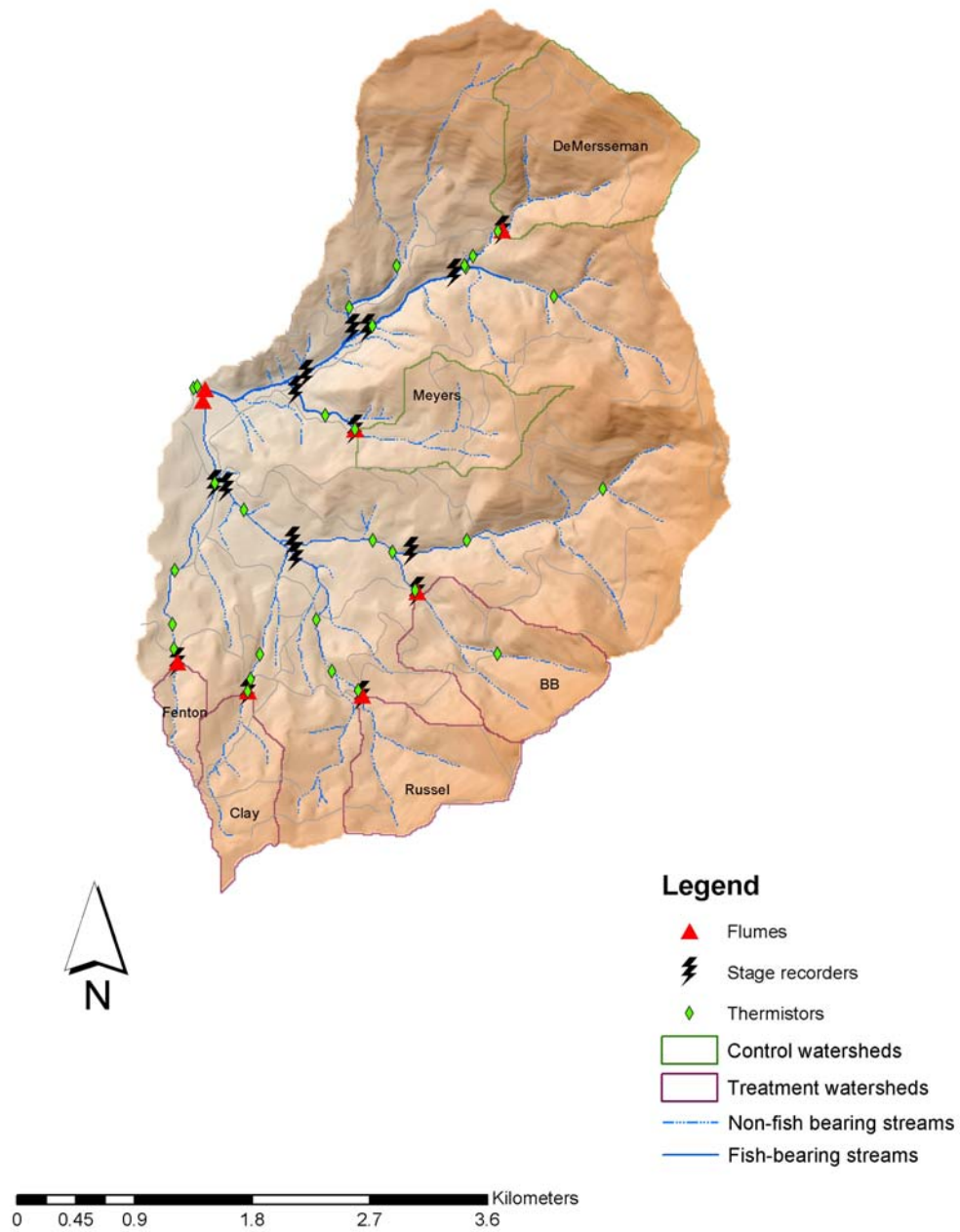


Figure 3: A map of the Hinkle Creek study watersheds showing the location of the small watersheds and the location of the hydrologic infrastructure.

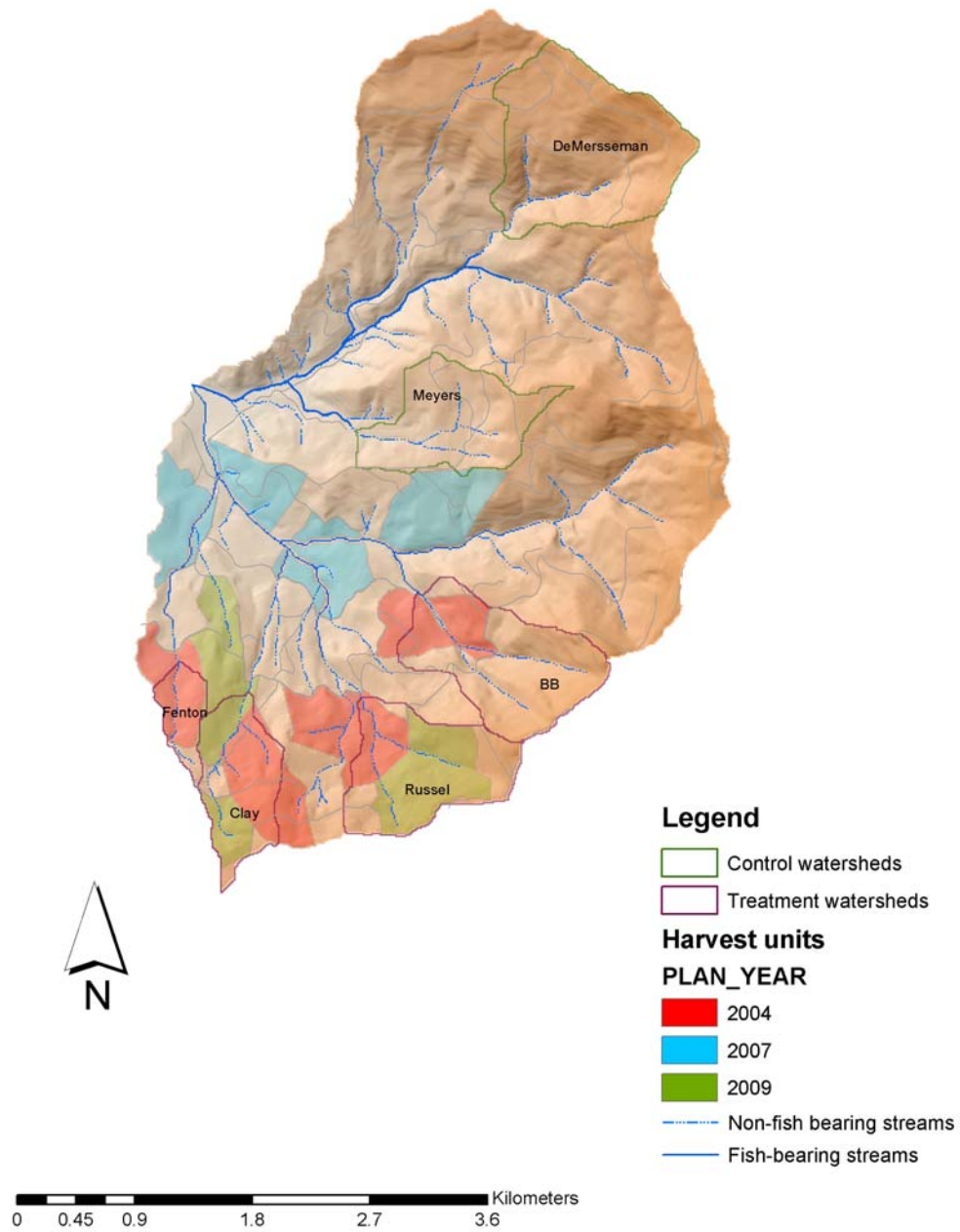


Figure 4: A map of the Hinkle Creek study watersheds showing the proposed harvest plan for the South Fork of Hinkle Creek through 2009.

## Literature Cited

- Adams, DM, R Schillinger, G Latta, and A Van Nalts. 2002. Timber Harvest Projections for Private Land in Western Oregon. Research Contribution 37, Forest Research Laboratory, Oregon State University, Corvallis.
- Anderson, WG, R Scott McKinley and Maria Colavecchia. 1997. The use of clove oil as an anesthetic for rainbow trout and its effects on swimming performance. *North American Journal of Fisheries Management* 17:301-307.
- Angermeier, PL, KL Krueger and CA Dolloff. 2002. Discontinuity in stream-fish distributions: Implications for assessing and predicting species occurrence. In: JM Scott, PJ Heglund, ML Morrison, JB Haufler, MG Raphael, WA Wall and FB Samson, editors. *Predicting species occurrences: Issues of accuracy and scale*. Island Press, Covelo, CA. pp 519-527.
- Bartlein, PJ, IC Prentice and T Webb III. 1986. Climatic response surfaces from pollen data for some eastern North American taxa. *Journal of Biogeography* 13:35-57.
- Benda, L, TJ Beechie, RC Wissmar and A Johnson. 1992. Morphology and evolution of salmonid habitats in a recently deglaciated river basin, Washington State, USA. *Canadian Journal of Fisheries and Aquatic Sciences* 79:1246-1256.
- Beschta, RL, JR Boyle, CC Chambers, WP Gibson, SV Gregory, J Grizzel, JC Hagar, JL Li, WC McComb, TW Parzybok, ML Reiter, GH Taylor, JE Warila. 1995. Cumulative effects of forest practices in Oregon: Literature and synthesis. Final Report to the Oregon Department of Forestry, Salem, Oregon.
- Beschta, RL and WS Platts. 1986. Morphological features of small streams: Significance and function. *American Water Resources Bulletin* 22: 369-379.
- Bilby, RE, and JW Ward. 1991. Characteristics and function of large woody debris in streams draining old-growth, clear-cut, and second-growth forests in southwestern Washington. *Canadian Journal of Fisheries and Aquatic Sciences*, 48:2499-2508.
- Bilby, RE and LJ Wasserman. 1989. Forest practices and riparian management in Washington state: data based regulation development. In: RE Gresswell, BA Barton and JL Kershner, editors. *Practical approaches to riparian resource management*. USDI Bureau of Land Management, Billings, Montana. pp 87-94.
- Bisson, PA, JL Nielsen, RA Palmason and LE Grove. 1982. A system of naming habitat types in small streams, with examples of habitat utilization by salmonids during low streamflow. In: NB Armantrout, editor. *Acquisition and utilization of aquatic habitat inventory information*. American Fisheries Society, Western Division, Bethesda, Maryland. pp 62-73.
- Bisson, PA, RE Bilby, MD Bryant, CA Dolloff, GB Greete, RA House, ML Murphy, KV Koski, and JR Sedell. 1987. Large woody debris in forested streams in the Pacific Northwest: past,

present, and future. In: EO Salo and TW Cundy, editors. Streamside management: forestry and fishery interactions. Institute of Forest Resources Contribution 57. University of Washington, College of Forest Resources, Seattle. pp 143-190.

Bisson, PA, TP Quinn, GH Reeves and SV Gregory. 1992. Best management practices, cumulative effects, and long-term trends in fish abundance in Pacific Northwest river systems. In: RJ Naiman, editor. Watershed management: balancing sustainability and environmental change. Springer-Verlag, New York, NY. pp 189-232.

Caselle, JE and RR Warner. 1996. Variability in recruitment of coral reef fishes: The importance of habitat at two spatial scales. *Ecology* 77(8):2488-2504.

Chamberlin, TW (Ed). 1988. Proceedings of the Workshop: Applying 15 Years of Carnation Creek Results. Pacific Biological Station, Nanaimo, B.C., January 13-15, 1987.

Chamberlin, TW, RD Harr, and FH Everest. 1991. Timber harvesting, silviculture, and watershed processes. In: WR Meehan, editor. Influences of forest and rangeland management on salmonid fishes and their habitats. Special Publication 19. American Fisheries Society, Bethesda, MD. pp 181-206.

Cromack, K Jr, RE Miller, OT Helgersen, RB Smith, and HW Anderson. 1999. Soil carbon and nutrients in a coastal Oregon Douglas-fir plantation with red alder. *Soil Science Society of America Journal*. 63: 232-239.

Everest, FH, RL Beschta, JC Scrivener, KV Koski, JR Sedell and CJ Cederholm. 1987. Fine sediment and salmonid production: A paradox. In: EO Salo and TW Cundy, editors. Stream side management: Forestry and fishery interactions. University of Washington, Institute of Forest Research, Contribution 57, Seattle, Washington. pp 98-142.

FEMAT (Forest Ecosystem Management Assessment Team), 1993. Forest Ecosystem Management: an Ecological, Economic, and Social Assessment. U.S. Department of Agriculture and U.S. Department of the Interior, Portland, Oregon.

Frissell, CA 1993. Topology of extinction and endangerment of native fishes in the Pacific Northwest and California (U. S. A.). *Conservation Biology* 7:342-354.

Frissell, CA, WJ Liss, CE Warren and MD Hurley. 1986. A hierarchical framework for stream habitat classification: viewing streams in a watershed context. *Environmental Management* 10: 199-214.

Gomi, T, RC Sidle and JS Richardson. 2002. Understanding processes and downstream linkages of headwater systems. *BioScience* 52:905-916.

Gowan, C, MC Young, KD Fausch and SC Riley. 1994. Restricted movement in resident stream salmonids: A paradigm lost. *Canadian Journal of Fisheries and Aquatic Sciences* 51:2626-2637.

Gregory, SV, GA Lamberti, DC Erman, KV Koski, ML Murphy, and JR Sedell. 1987. Influence of forest practices on aquatic production. In; EO Salo and TW Cundy, editors. Streamside management: Forestry and fishery interactions. University of Washington, Institute of Forest Resources, Contribution 57. Seattle, Washington. pp. 233-255.

Gresswell, RE, WJ Liss, GL Larson and PJ Bartlein. 1997. Influence of basin-scale physical variables on life-history characteristics of cutthroat trout in Yellowstone Lake. Transaction of the American Fisheries Society 126:1046-1064.

Hall, JD and RL Lantz. 1969. Effects of logging on the habitat of coho salmon and cutthroat trout in coastal streams. In; TG Northcote, editor. Symposium on salmon and trout in streams. MacMillan Lectures in Fisheries, University of British Columbia, Vancouver, B.C. pp. 335-375

Hall, JD, PA Bisson and RE Gresswell, editors. 1997. Sea-run cutthroat trout: Biology, management, and future conservation. Oregon Chapter, American Fisheries Society, Corvallis.

Hall, JD and NJ Knight. 1981. Natural variation in abundance of salmonid populations in streams and its implications for design of impact studies. U.S. Environmental Protection Agency EPA-600/S3-81-021.

Hankin, DG and GH Reeves. 1988. Estimating total fish abundance and total habitat area in small streams based on visual estimation methods. Canadian Journal of Fisheries and Aquatic Sciences 45:834-844.

Hartman, G. (Ed.) 1982. Proceeding of the Carnation Creek Workshop: A 10 Year Review. Pacific Biological Station, Nanaimo, British Columbia, February 24-26.

Hicks, BJ, JD Hall, PA Bisson, and JR Sedell. 1991. Responses of salmonids to habitat changes. In: WR Meehan, editor. Influences of forest and rangeland management on salmonid fishes and their habitats. American Fisheries Society Special Publication 19, Bethesda, Maryland. pp 483-518.

Hosmer, DW and S Lemeshow. 1989. Applied logistic regression. John Wiley and Sons, New York, N.Y.

Independent Multidisciplinary Science Team. 1999. Recovery of Wild Salmonids in Western Oregon Forests: Oregon Forest Practices Act Rules and the Measures in the Oregon Plan for Salmon and Watersheds. Technical Report 1999-1 to the Oregon Plan for Salmon and Watersheds, Governor's Natural Resources Office, Salem, Oregon.

Johnson, SL, and JA Jones. 2000. Stream temperature responses to forest harvest and debris flows in western Cascades, Oregon. Canadian Journal of Fisheries and Aquatic Sciences, 57 (Supplement 2):30-39.

Johnson, DW, and PS Curtis. 2001. Effects of forest management on soil C and N storage: meta analysis. *Forest Ecology and Management*. 140: 227-238.

Jones, KK, RL Flitcroft and BA Thom. 2001. Spatial patterns of aquatic habitat in Oregon. In: T Nishida, PJ Kailola and CE Hollingworth, editors. *Proceedings of the First International Symposium on GIS in Fishery Science*. Fishery GIS Research Group, Saitama, Japan. pp 266-280.

Jones, ML and JD Stockwell. 1995. A rapid assessment procedure for the enumeration of Salmonid populations in streams. *North American Journal of Fisheries Management* 15:551-562.

Keene, JL, DLG Noakes, RD Moccia and CG Soto. The efficacy of clove oil as an anaesthetic for rainbow trout, *Oncorhynchus mykiss* (Walbaum). 1998. *Aquaculture Research* 29:89-101.

Knoepp, JD, and WT Swank. 1995. Comparison of available soil nitrogen assays in control and burned forested sites. *Soil Science Society of America Journal*. 59:1750-1754.

Lee, D, J Sedell, B Rieman, R Thurnow and J Williams. 1997. Broad-scale assessment of aquatic species and habitats, In: TM Quigley and SJ Arbelbide, editors. *An assessment of ecosystem components in the Interior Columbia Basin and portions of the Klamath and Great Basins*. General Technical Report PNW-GTR-405. US Department of Agriculture, Forest Service, Pacific Northwest Research Station, Portland, Oregon.

Li, J, A Herlihy, W Gerth, P Kaufmann, S Gregory, S Urquhart and DP Larson. 2001. Variability in stream macroinvertebrates at multiple spatial scales. *Freshwater Biology* 46:87-97.

MacDonald, LH, AW Smart, and RC Wissmar. 1991. Monitoring guidelines to evaluate effects of forestry activities on streams in the Pacific Northwest and Alaska. EPA 910/9-91-001. US Environmental Protection Agency. Region 10. Seattle, Washington, USA.

May, CL and RE Gresswell. 2003. Processes and rates of sediment and wood accumulation in headwater streams of the central Oregon Coast Range. *Earth Surface Processes and Landforms* 28: 409-424.

May, RM. 1994. The effects of spatial scale on ecological questions and answers. In: PJ Edwards, RM May and NR Webb, editors. *Large-scale ecology and conservation biology*. British Ecological Society, Blackwell Science Ltd., Oxford. pp 1-17.

McCune, B and JB Grace. 2002. Analysis of ecological communities. MjM Software Design, Gleneden Beach, OR.

Meehan, W. R. (Ed), 1991. Influences of Forest and Rangeland Management on Salmonid Fishes and Their Habitats. American Fisheries Society Special Publication 19.

Montgomery, DR and JB Buffington. 1997. Channel-reach morphology in mountain drainage basins. *Geographic Society of America Bulletin* 109:596-611.

Moring, JR. 1975. The Alsea Watershed Study: Effects of logging on the aquatic resources of three headwater streams of the Alsea River, Oregon. Part II – Changes in Environmental Conditions. Fishery Research Report No. 9. Oregon Department of Fish and Wildlife. Corvallis, OR. 39 pp.

Moring, JR and RL Lantz. 1975. The Alsea Watershed Study: Effects of logging on the aquatic resources of three headwater streams of the Alsea River, Oregon. Part I – Biological Studies. Fishery Research Report No. 9. Oregon Department of Fish and Wildlife. Corvallis, OR. 66 pp.

Murphy ML and JD Hall. 1981. Varied effects of predators and their habitat in small streams of the Cascade Mountains, Oregon. Canadian Journal of Fisheries and Aquatic Sciences 38:137-145.

Naiman, RJ, TJ Beechie, LE Benda, DR Berg, PA Bisson, LH MacDonald, MD O'Connor, PL Olson and EA Steel. 1992. Fundamental elements of ecologically healthy watersheds in the Pacific Northwest Coastal Ecoregion. In: RJ Naiman, editor. Watershed management: Balancing sustainability and environmental change. Springer-Verlag, New York. pp 127-188.

Naiman, RJ, KL Fetherston, SJ McKay and J Chen. 1998a. Riparian Forests. In: RJ Naiman, RE Bilby, and S Kantor, editors. River Ecology and Management. Springer-Verlay, New York. pp. 289-323.

Naiman, RJ, PA Bisson, FG Lee, and MG Turner. 1998b. Watershed Management. In: RJ Naiman, RE Bilby, and S Kantor, editors. River Ecology and Management. Springer-Verlay, New York. pp. 642-661.

Nation Research Council. 1996. Upstream: Salmon and Society in the Pacific Northwest. National Academy Press, Washington, DC.

Nehlsen, W, JE Williams, JA Lichatowich. 1991. Pacific salmon at the crossroads: Stocks at risk from California, Oregon, Idaho, and Washington. Fisheries 16 (2), 4-21.

Nickelson, TE, MF Solazzi, SL Johnson and JD Rodgers. 1992. Effectiveness of selected stream improvement techniques to create suitable summer and winter rearing habitat for juvenile coho salmon (*Oncorhynchus kisutch*) in Oregon coastal streams. Canadian Journal of Fisheries and Aquatic Sciences 49:790-794.

ODF, 2004. 25-Year Harvest History. Available online from the Oregon Department of Forestry, [http://www.odf.state.or.us/DIVISIONS/resource\\_policy/resource\\_planning/Annual\\_Reports/rpt25YearHistory.asp](http://www.odf.state.or.us/DIVISIONS/resource_policy/resource_planning/Annual_Reports/rpt25YearHistory.asp), Accessed 3-12-2004.

OFRI, 2003. Forest Fact Book. Oregon Forest Resources Institute, Portland, Oregon. p. 24.

Osenberg, CW and RJ Schmitt. 1996. Detecting ecological impacts caused by human activities. In: RJ Schmitt and CW Osenberg, editors. Detecting ecological impacts: Concepts and applications in coastal habitats. Academic Press, Inc., San Diego. pp 3-16.

Pacific Lumber Company. 1999. Habitat Conservation Plan for the Properties of The Pacific Lumber Company, Scotia Pacific Holding Company, and Salmon Creek Corporation. Available online at <http://www.palco.com/hcp.pdf>. Accessed 5-11-04.

Poff, NL and JD Allan. 1995. Functional organization of stream fish assemblages in relation to hydrological variability. Ecology 76: 606-627.

Ramsey, FL and DW Schafer. 1997. The statistical sleuth: A course in methods of data analysis. Duxbury Press, Belmont, CA.

Reeves, GH, FH Everest and JR Sedell. 1993. Diversity of juvenile anadromous salmonid assemblages in coastal Oregon basins with different levels of timber harvest. Transactions of the American Fisheries Society 122:309-317.

Reeves, GH, LE Benda, KM Burnett, PA Bisson and JR Sedell. 1995. A disturbance-based ecosystem approach to maintaining and restoring freshwater habitats of evolutionarily significant units of anadromous salmonids in the Pacific Northwest. American Fisheries Society Symposium 17:334-349.

Reid, LM. 1993. Research and Cumulative Watershed Effects. USDA Forest Service, Pacific Southwest Research Station. General Technical Report PSW-GTR-141. 118 pp.

Rossi, RE, DJ Mulla, AG Journel and EH. Franz. 1992. Geostatistical tools for modeling and interpreting ecological spatial dependence. Ecological Monographs 62:277-314.

Rothe A, K Cromack, Jr, SC Resch, E Makinicki, and Y Son. 2002. Soil Carbon and nitrogen changes under Douglas-fir with and without red alder. Soil Science Society of America Journal. 66: 1988-1995.

Salo, EO and TW Cundy. 1987. Streamside Management: Forestry and Fishery Interactions. University of Washington, Institute of Forest Resources, Contribution No. 57. Seattle, Washington.

Sedell, JR, and RL Beschta. 1991. Bringing back the "bio" in bioengineering. American Fisheries Society Symposium 10:160-175.

Sollins P, CC Grier, FM McCorison, K Cromack JR, R Fogel, and RL Fredriksen. 1980. The internal nutrient cycles of an old-growth Douglas-fir ecosystem in western Oregon. Ecological Monographs 50:261-285.

Swanson FJ, JL Clayton, WF Megahan, and G Bush. 1989. Erosional processes and long-term site productivity. In: DA Perry, R Meurisse, B Thomas, R Miller, J Boyle, J Means, CR Perry,



and RF Powers, editors. Maintaining the long-term productivity of Pacific Northwest forest ecosystems. Timber Press, Portland, Oregon. p. 67-81.

Tabachnick, BG and LS Fidell. 1989. Using multivariate statistics. HarperCollins, New York.

Thrush, SF, RD Pridmore and JE Hewitt. 1996. Impacts on soft-sediment macrofauna. In: RJ Schmitt and CW Osenberg, editors. Detecting ecological impacts: Concepts and applications in coastal habitats. Academic Press, Inc., San Diego. pp 49-66.

Thurrow, RF, DC Lee and BE Rieman. 1997. Distribution and status of seven native salmonids in the interior Columbia basin and portions of the Klamath River and Great Basins. North American Journal of Fisheries Management 17:1094-1110.

Trexler, JC and J Travis. 1993. Nontraditional regression analysis. Ecology 74:1629-1637.

Triska FL, JR Sedell, K Cromack Jr, SV Gregory, and FM McCorison. 1984. Nitrogen budget for a small coniferous forest stream. Ecological Monographs 54: 119-140.

USFS Redwood Sciences Lab. 2004. Turbidity Threshold Sampling.  
<http://www.fs.fed.us/pnw/topics/water/tts>. Last accessed 5-11-04.

Vanderbilt KL, K Lajtha, and FJ Swanson. 2003. Biogeochemistry of unpolluted forested watersheds in the Oregon Cascades: temporal patterns of precipitation and stream nitrogen fluxes. Biogeochemistry 62: 87-117.

Washington Department of Natural Resources. 2004. WAC-222 Forest Practices Rules. Available online at <http://www.dnr.wa.gov/forestpractices/rules>. Accessed 5-11-04.

White, PS and STA Pickett. 1985. Natural disturbance and patch dynamics: An introduction. In: STA Pickett and PS White, editors. The ecology of natural disturbance and patch dynamics. Academic Press, San Diego. pp 3-13.

Wiley, MJ, SL Kohler and PW Seelbach. 1997. Reconciling landscape and local views of aquatic communities: Lessons from Michigan trout streams. Freshwater Biology 37:133-148.

Williams, JA and W Nehlsen. 1997. Status and trends of anadromous salmonids in the coastal zone with special reference to sea-run cutthroat trout. In: JD Hall, PA Bisson and RE Gresswell, editors. Sea-run cutthroat trout: Biology, management, and future conservation. Oregon Chapter, American Fisheries Society, Corvallis, Oregon. pp 37-42.