



# 2019 LWC Project Annual Report

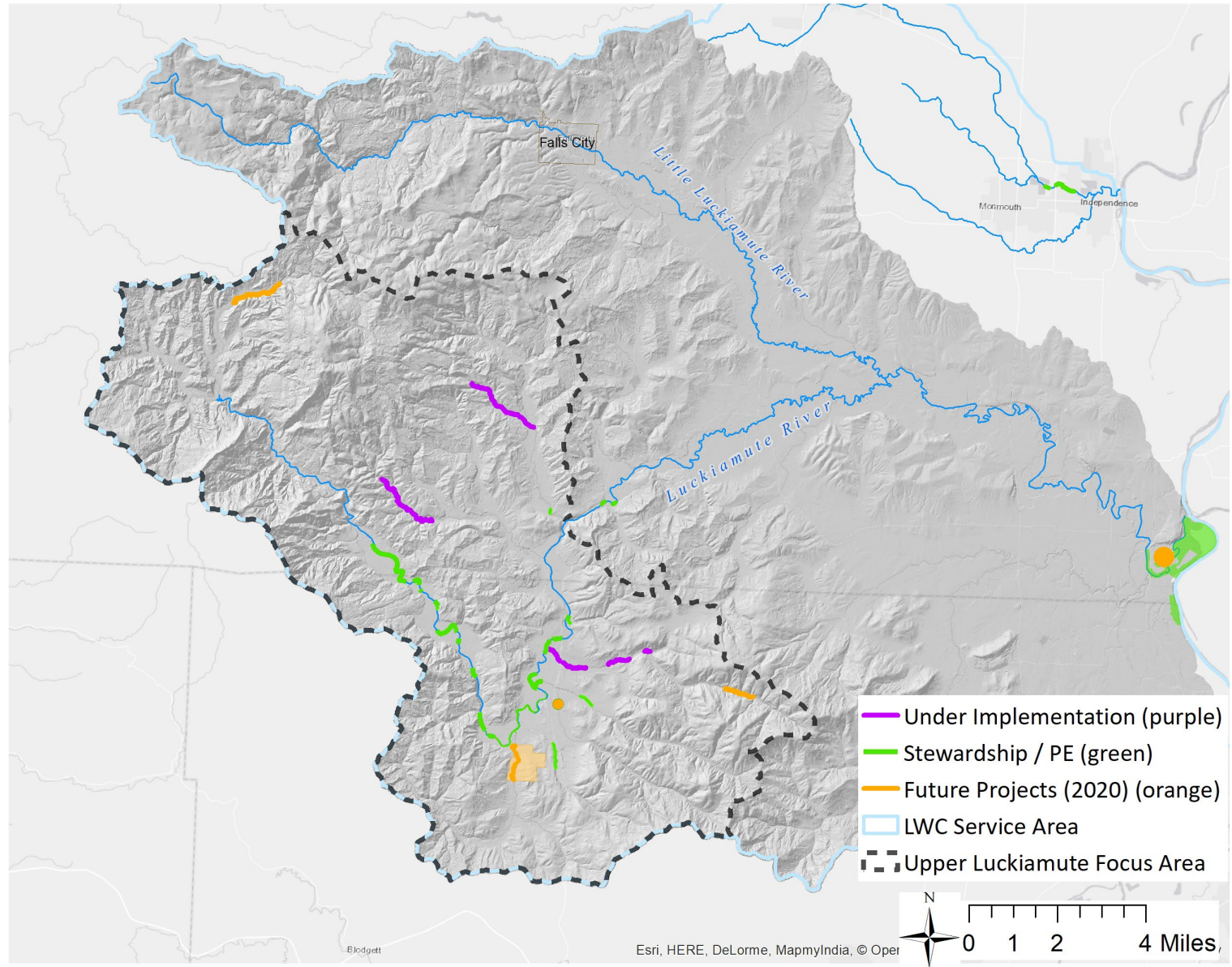
Jean-Paul Zagarola  
Project Manager

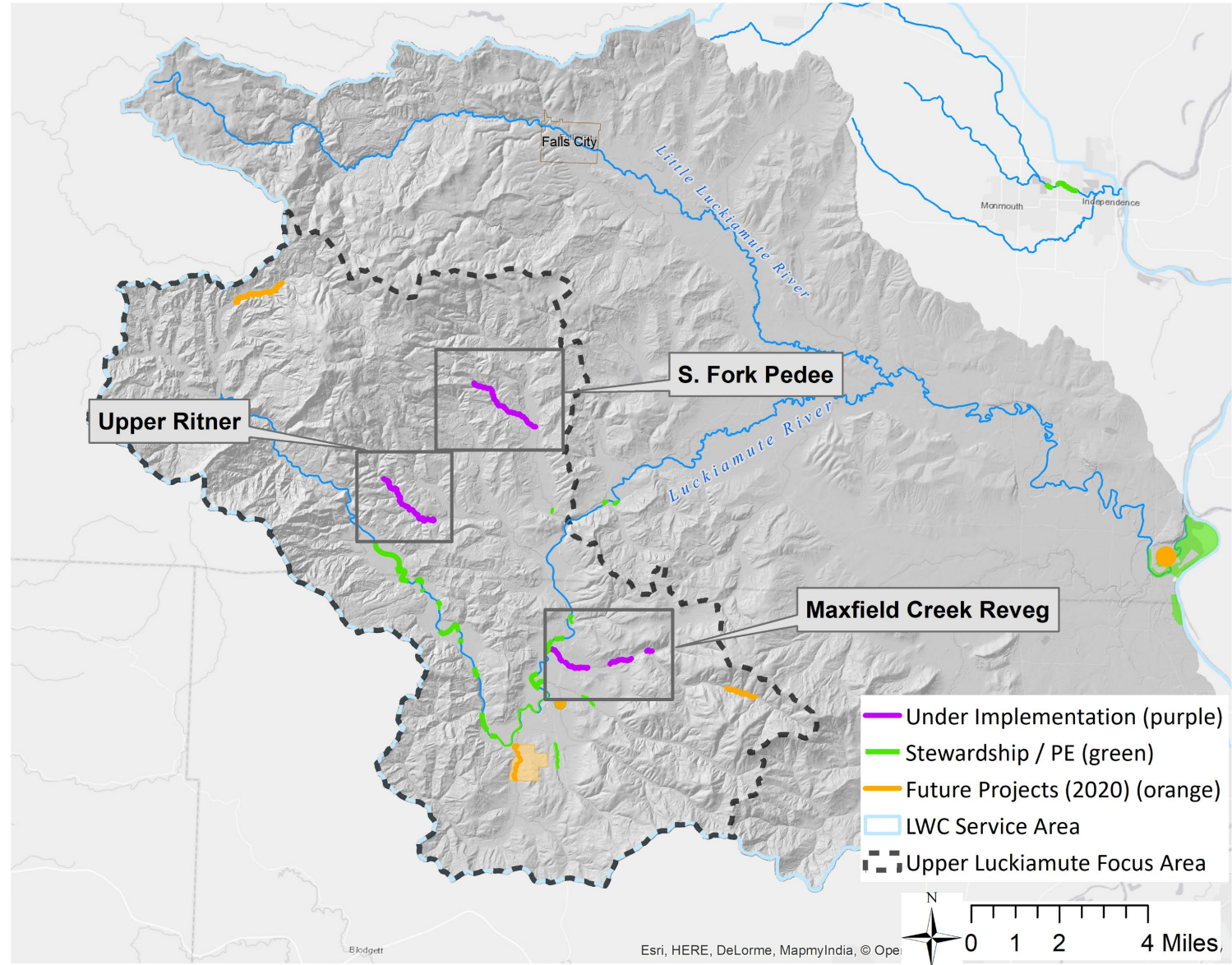
Bonneville Environmental Foundation



# 2019 LWC Projects

---





# Projects Under Implementation

-6.6 miles of stream enhancement/restoration

-36 acres of riparian revegetation



## South Fork Pedee Creek Enhancement Project

**NetMap Ranking** - #1 of 15

**Land Owners** - BLM, Hancock Timber Resources, Starker Forests, Private Resident, Forests Forever

**Other major partners** - OWEB, Xerces Society, Western Oregon University

**Target Species** - winter steelhead, cutthroat trout, coho, Pacific lamprey

**Number of acres or stream miles impacted** - 2.1 miles of stream and 6 acres riparian

**PRC goal(s) addressed**

- water quantity/quality,
- aquatic habitat processes,
- ecological function of riparian buffers, and/or



## South Fork Pedee Creek Enhancement Project

**Project Goal** - Improve salmonid and lamprey production and water storage in upper Pedee

### Accomplishments to date

1. Mussel survey complete
2. Macroinvertebrate baseline sampling complete
3. Lower culvert removed and replaced with fish friendly bridge
4. 22 Large wood structures installed
5. Baseline monitoring complete
6. Blackberry treatment and cutting in reveg area complete

### Next Steps

1. Conifer enrichment
2. Replacement of upper culvert
3. Continue site prep on reveg area
4. Reveg planting and plant establishment
5. Education and outreach



## Upper Ritner Creek Splash Dam Recovery Project

**Project Goal** - Recover legacy impacts to salmonid and beaver habitat

**NetMap Ranking** - #5 of 15

**Land ownership** - BLM, Hancock Timber Resources

**Funder** - OWEB, BLM, Hancock Timber Resources

**Target Species** - salmonids, beaver

**Stream miles or acres impacted** - 2.5 total stream miles, 2 acres of reveg

### PRC goal(s)

- water quantity/quality,
- aquatic habitat processes,
- ecological function of riparian buffers

### Accomplishments to date

1. Log placement in 27 structures
2. 1200 conifers planted
3. Actively controlling reed canary grass in all areas (>2 acres)

### Next Steps

1. Continue reed canary grass control
2. Heavily plant low gradient open areas with willow cuttings (beaver food)



## Building Resiliency and Connecting Corridors - Maxfield Creek Phase I

**Project Goal** - Restore the Maxfield Riparian Corridor

**Land owners and funders** - Luckiamute Meadows Farm Conservation Area, Sunrise Tree Farm and Four rural residential properties, OWEB, Oregon Wildlife Foundation

**Target Species** - salmonids

**Acres and Stream miles impacted** - 28 acres/1.95 miles

### PRC goal(s)

- water quantity/quality,
- aquatic habitat processes,
- ecological function of riparian buffers

### Accomplishments to date

1. 28 acres prepped and weeds controlled
2. 5300 bareroot plants planted, 500 dogwood cuttings installed

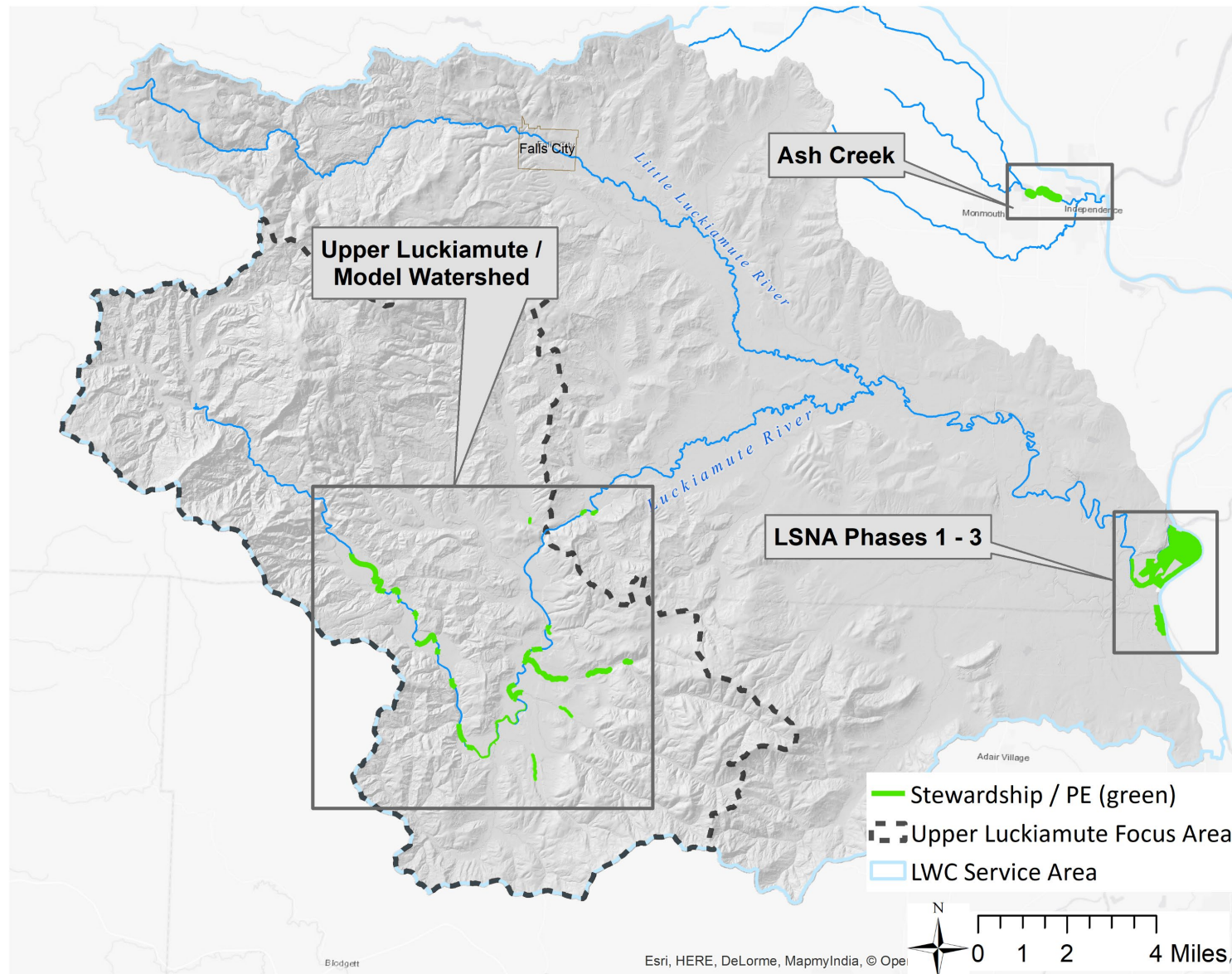
### Next Steps

1. Plant an additional 15,950 plants
2. Continue weed control and plant establishment

# Projects Under Stewardship

-40 sites

-641 acres of riparian plant establishment or long-term stewardship





## LSNA Phases I - III (2010-present)

**Project Goal** - Restore and enhance floodplain forest at the dynamic Luckiamute-Willamette confluence

**Land ownership** - OPRD

**Funder** - BPA, MMT, OWEB, OPRD

**Target Species** - salmonids, various bird and wildlife species

**Acres impacted** - 531 acres

### PRC goal(s)

- water quantity/quality,
- aquatic habitat processes,
- ecological function of riparian buffers
- quantity/quality of off-channel habitat

### Accomplishments to date

1. Over 530,000 plants
2. 400 acres of noxious weed controlled

### Next Steps

1. Continue stewardship activities
2. Continue survey and weed control in Gallery Forest



## Main Stem Ash Creek Riparian Revegetation

**Project Goal** - Improve riparian function in an urban setting

**Land ownership** - Cities of Independence and Monmouth, Ash Creek Water Control District, Local Fire District, Multiple private residents

**Funder** - OWEB, Pacific Power, Rotary

**Target Species** - salmonids

**Acres and Stream miles impacted** - 12 acres/1.4 miles of reveg; 52.6 acres/1.4 miles ivy

**PRC goal(s)**

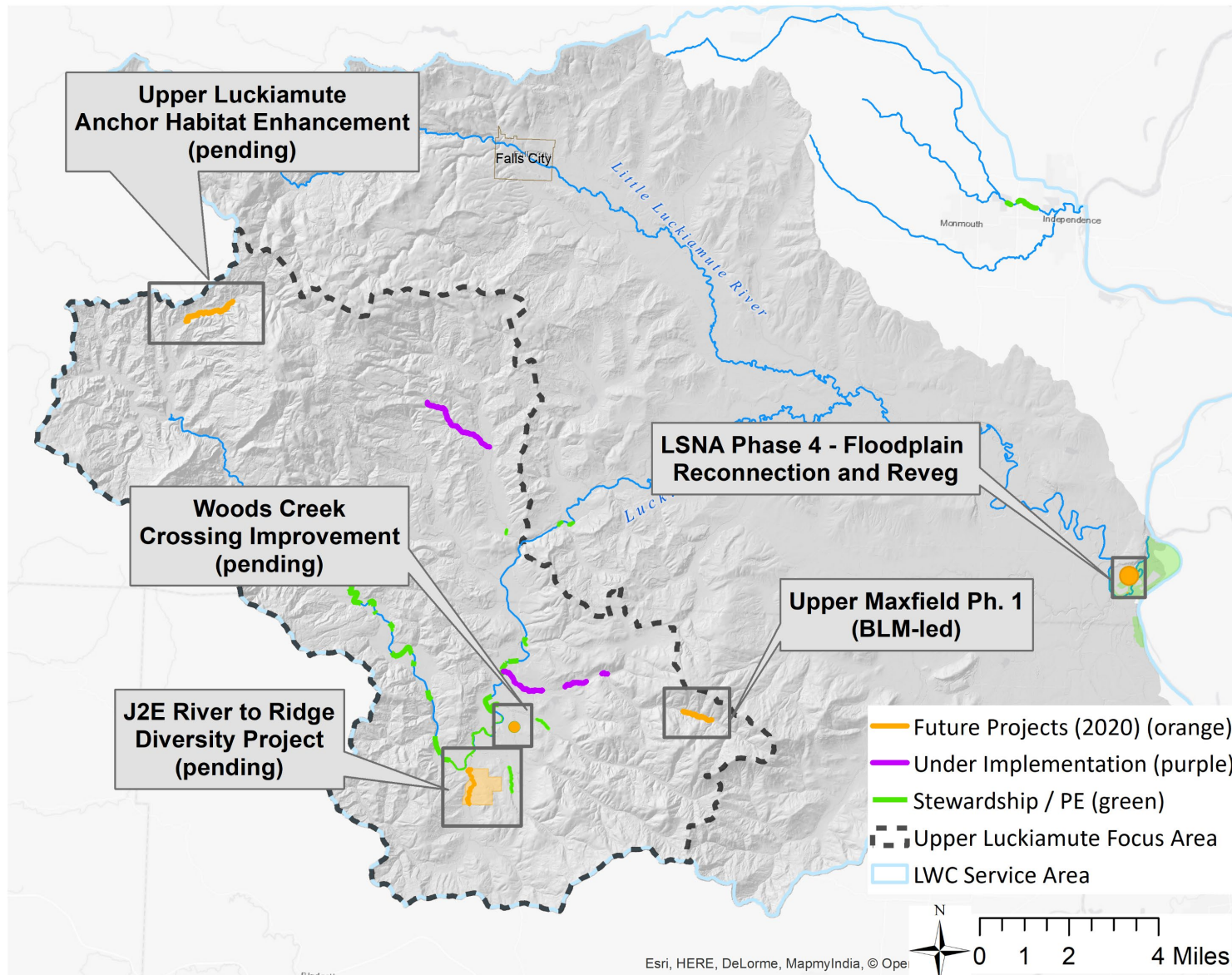
- water quantity/quality,
- aquatic habitat processes,
- ecological function of riparian buffers

**Accomplishments to date**

1. All 12 acres planted with over 63,000 plants
2. Ivy controlled and less than 1% exists in riparian

**Next Steps**

1. One more round of weed control
2. Transition long-term stewardship to landowners



# The Work Ahead (2020)

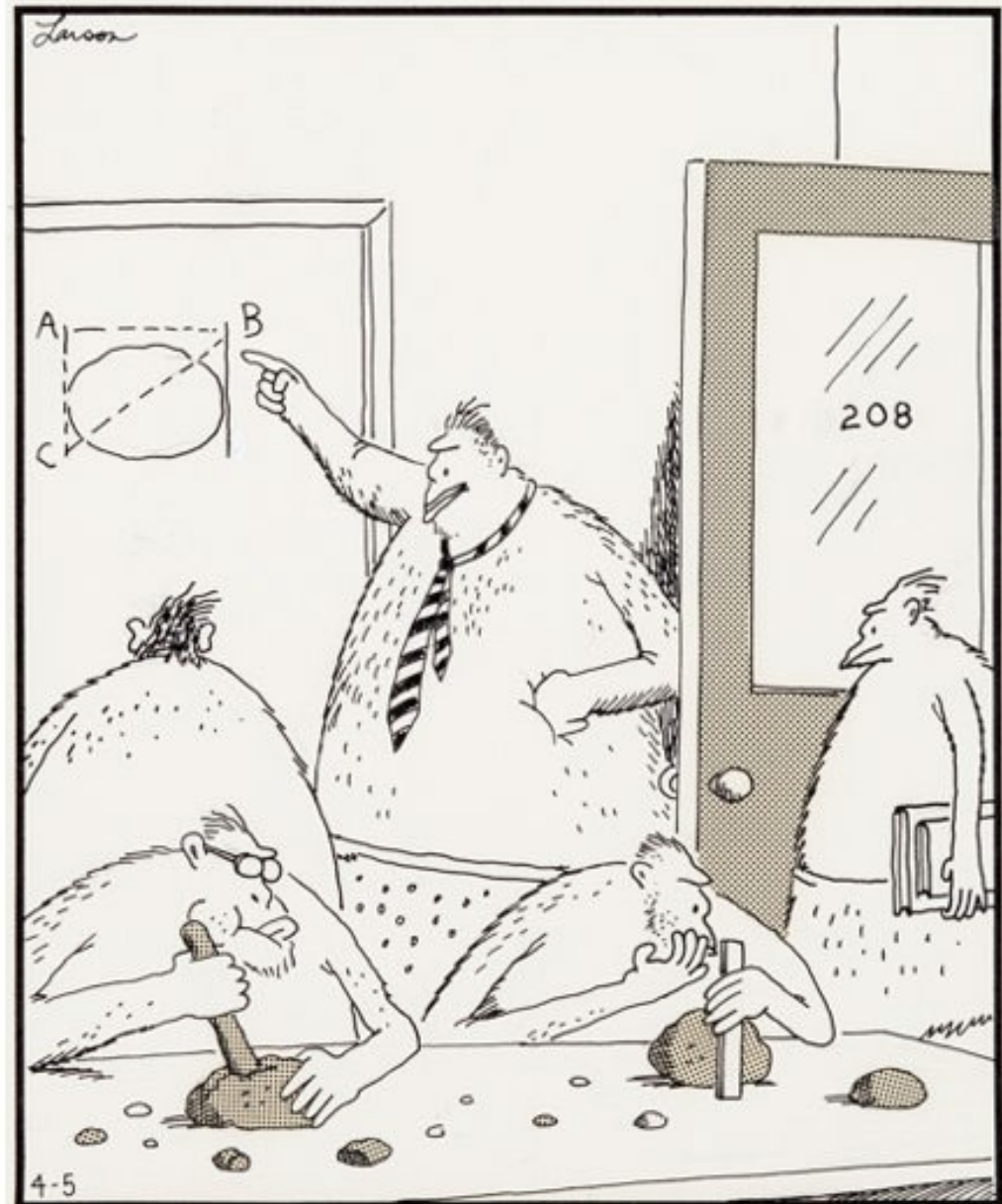
- 7 projects
- 102 acres of riparian reveg
- 22 acres wetland enhancement or survey
- 3.7 miles of in-stream enhancement
- 16 acres oak habitat enhancement
- 14 acres off-channel rearing habitat enhancement
- 45 miles of knotweed stream surveys

# The Work Ahead

---

**THE FAR SIDE**

By GARY LARSON



Rock Shop 101



## Protecting the Best: Upper Luckiamute Mainstem Anchor Habitat Enhancement

- **NetMap Ranking** - #7 of 15
- **Land Ownership(s)** - Hancock Timber Resources, Starker Forests
- **Other major partners** - BLM, Xerces Society, USFWS, IAE
- **Target Species** - winter steelhead, cutthroat trout, coho, Pacific lamprey, hybrid Nelson's-Meadow Checkermallow
- **Acres or stream miles impacted** - 8 acre wetland, 1.58 miles of stream and riparian
- **PRC goal(s) addressed**
  - water quantity/quality,
  - aquatic habitat processes,
  - ecological function of riparian buffers



## Protecting the Best: Upper Luckiamute Mainstem Anchor Habitat Enhancement

**Project Goal** - Improve salmonid and lamprey production and water storage in Luckiamute anchor habitat and enhance conditions in a unique high elevation wetland.

### **Accomplishments to date**

1. Stream surveys completed
2. Draft design of large wood placement
3. Preliminary wetland survey
4. Grant application submitted

### **Next Steps**

1. OWEB Site visit
2. Secure Funding
3. Implementation!



## LSNA Floodplain Reconnection and Reforestation (Phase IV)

**Land Ownership** - OPRD

**Other major partners** - BPA, MMT, OWEB, USGS

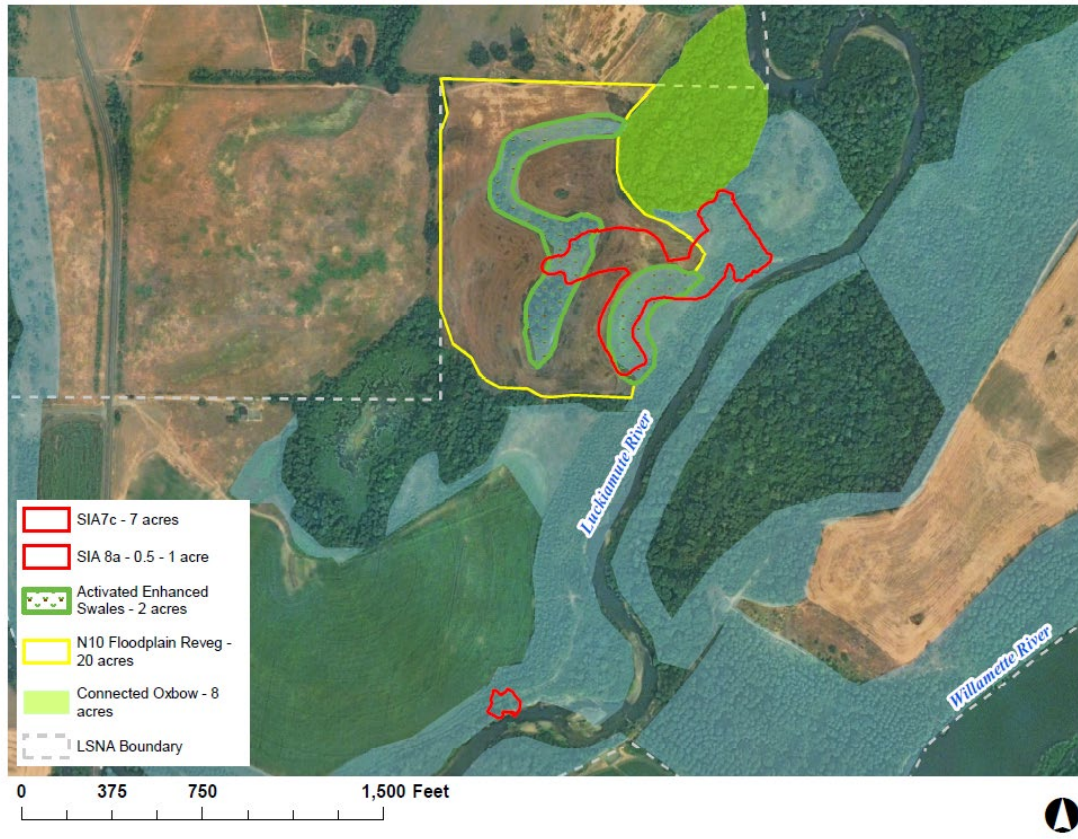
**Target Species** - Spring Chinook, winter steelhead

**Acres or stream miles impacted** - 17 acres reveg, 14 acres of enhanced/restored off-channel habitat, and 0.4 mainstem river miles impacted

**PRC goal(s) addressed**

- water quantity/quality,
- aquatic habitat processes,
- ecological function of riparian buffers
- quantity/quality of off-channel habitat

### LSNA Floodplain Reconnection and Revegetation Project Elements



## LSNA Floodplain Reconnection and Reforestation (Phase IV)

**Project Goal** - Improve off-channel winter rearing habitat for spring Chinook and winter steelhead

### Accomplishments to date

1. Contracted engineering and construction oversight contractor
2. Conducted baseline monitoring
3. Outreach to neighboring properties
4. Permitting partially complete
5. Cultural resources survey complete
6. Site prep on large field

### Next Steps

1. Complete permitting
2. RFP and contract for construction
3. Excavation of reconnection
4. Reveg planting and plant establishment
5. Education and outreach
6. More baseline and effectiveness monitoring

Thank you!!!!

---

© 1990 FarWorks, Inc./Dist. by Universal Press Syndicate

