

## FINAL EXAM REVIEW

This is a list of review problems provided to all MTH 111 students.

Unless specified in the problem, these problems can be done without a calculator. If they were on the calculator portion, you could expect slightly more difficult numbers.

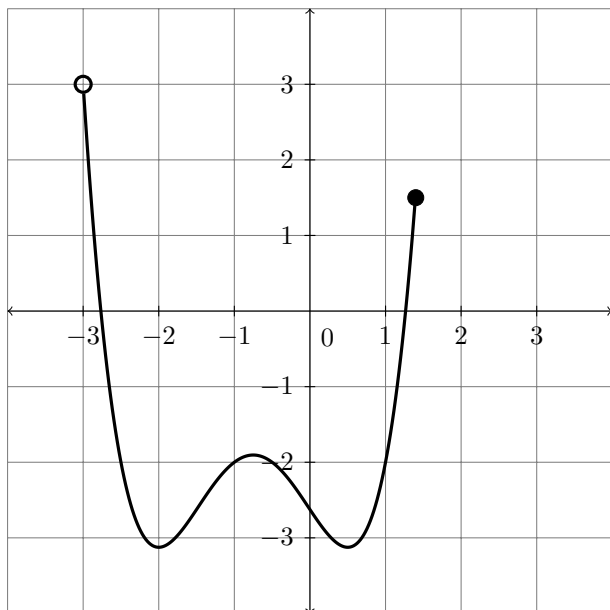
Be aware that not all topics are covered by this review.

Studying only these problems will NOT be enough preparation for the final exam. Please be sure to review all course materials in preparation for the final exam.

### Final Exam Information

- The final exam is cumulative.
- You may use ONE  $3 \times 5$  notecard of HANDWRITTEN notes to be turned in with your final exam.
- The final exam has a calculator portion and a non-calculator portion
- On the CALCULATOR portion ONLY, you may use an approved calculator (TI-84 PLUS CE or less)

1. Find all extrema. Be sure to specify what type of extrema it is.



2. Sketch the graph of a polynomial with no absolute maximum but an absolute minimum of 2 at  $x = -2$  and a local maximum of 6 at  $x = 1$ .
3. Describe the end behavior of a degree three polynomial with a leading coefficient of  $-257$ .

## FINAL EXAM REVIEW

4. Use the Division Algorithm to write  $f(x)$  in the form  $f(x) = d(x) \cdot q(x) + r(x)$  where

$$f(x) = 3x^4 - 16x^3 - 19x^2 + 44x - 12 \quad \text{and} \quad d(x) = x^2 + x - 1$$

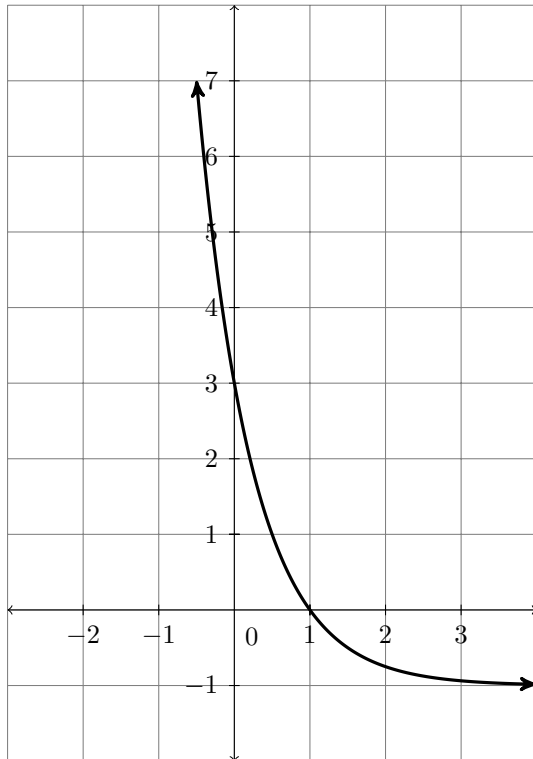
5. Solve

$$2x^5 + x^4 = -6x^3 - 3x^2$$

6. Solve

$$2u^{-2} - 5u^{-1} = 3$$

7. Using the graph of  $g(x)$  below, find the average rate of change of  $g$  on  $[0,1]$ .



8. For the following, consider  $f(x)$  given below.

$$f(x) = \begin{cases} -(x+4)^3 + 1 & \text{if } x < -2 \\ 2 & \text{if } -2 \leq x \leq 1 \\ \ln(x) & \text{if } x > 1 \end{cases}$$

(a) Find  $x$  such that  $f(x) = 0$

(b) Graph  $f(x)$

9. (Calculator) The maximum load that a horizontal beam can carry is directly proportional to its width. If a beam 1.5 inches wide can support a load of 250 pounds, find the load that a beam of the same type can support if its width is 3.5 inches.

## FINAL EXAM REVIEW

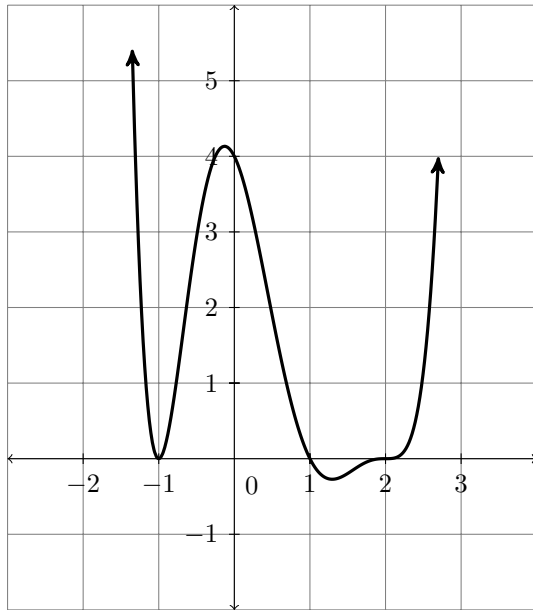
10. Simplify the following.

(a)  $6^{\log_6(x^2-1)}$

(b)  $\ln(e^x)$

(c)  $\log_5 125$

11. The graph of a polynomial  $f(x)$  is given below.



(a) Using the graph and smallest degree possible, write the complete factored form of  $f$ . *Hint: the leading coefficient is not  $\pm 1$*

(b) Solve  $f(x) > 0$ . Write your answer in interval notation.

12. (Calculator only because of the  $\frac{2}{3}$ ) If a zero of  $k$  is  $\frac{2}{3}$ , find the complete factored form of

$$k(x) = 3x^4 - 5x^3 + 50x^2 - 80x + 32$$

13. For the following parts, consider the function,  $h(x) = \frac{5x^2 + 18x - 8}{2x^2 + 5x - 12}$

(a) State the domain of  $h$ .

(b) State all vertical asymptotes (if any).

(c) State the horizontal asymptote.

(d) Does the graph cross its horizontal asymptote? Justify.

14. (Calculator) How much money would you make if you invested \$8,200 in an account for 5 years that is compounded monthly at a rate of 6.8%? What about daily at a rate of 6%?

15. For the following, let  $f(x) = (2x - 1)^5 + 7$ .

(a) Find  $f^{-1}$ .

(b) Verify that  $f$  and your answer to **15a** are inverses.

**FINAL EXAM REVIEW**

16. The tables for  $g$  and  $h$  are given below. Find the following. If it is not possible, then state so.

$x$	1	2	4	6	7	11
$g(x)$	-4	0	8	2	3	-2

$x$	0	2	4	6	8	11
$h(x)$	6	0	12	7	2	-3

(a)  $(g+h)(2)$

(b)  $\left(\frac{h}{g}\right)(2)$

(c)  $(g \circ h)(0)$

(d)  $g^{-1}(2)$

(e)  $(g \cdot h)(6)$

(f)  $(g \circ h^{-1})(12)$

17. Solve

$$2 \ln(x - 1) = 14$$

18. Solve

$$3^{x-2} = 11^{7x}$$

19. Write as a single logarithm

$$\frac{1}{3} \log(2x) + 4 \log z - 2 \log y$$

20. Expand the logarithm. If possible, write your answer without exponents.

$$\ln \frac{y^4 \sqrt{2x^2 - 1}}{z^3}$$

21. Solve

$$\log_2(2x) = 4 - \log_2(x + 2)$$

22. (Calculator) The voltage in a battery decreases by roughly 13% an hour when in use. Write a formula for  $V(t)$  where  $V(t)$  is the voltage of a 9 volt battery after  $t$  hours in use.

23. (Calculator) Near New Guinea there is a relationship between the number of bird species found on an island and the size of the island. The table lists the number of species of birds  $y$  found on an island with an area of  $x$  square kilometers.

$x$ ( $km^2$ )	0.1	1	10	100	1000
$y$ (species)	10	15	20	25	30

(a) Use regression to find a function  $f$  that models the data.

(b) Predict the number of bird species on an island of 5,000 square kilometers. Did you use interpolation or extrapolation?

(c) If there are 50 bird species on an island, how many square kilometers would you expect the island to be?

## FINAL EXAM REVIEW

24. Consider  $h(x) = \log_4(-x + 1) - 3$

(a) State the domain of  $h(x)$ .

(b) Graph  $h(x)$ . Be sure to include any intercepts or asymptotes.

(c) Briefly describe how you graphed  $h$ .

25. For the following, assume that you are given the graph of  $f$ . Describe how you would graph the function listed.

(a)  $f(x) + 1$

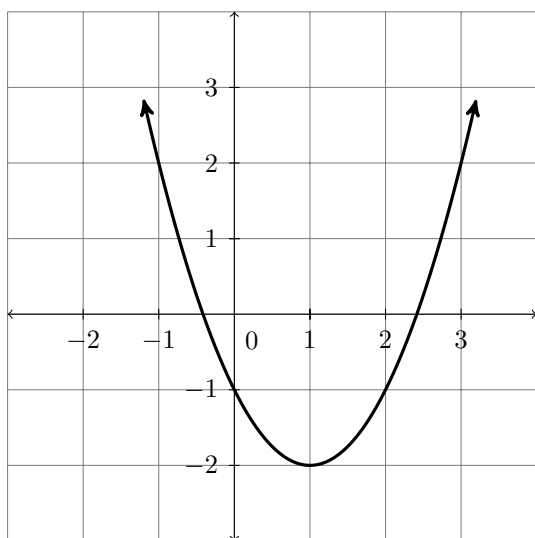
(b)  $4f(-x)$

(c)  $\frac{1}{10}f(x - 3) - 20$

(d)  $-3f(-x + 7) + 10$

(e)  $8 - f(4x - 2)$

26. Using the graph below, determine if the function is even, odd, or neither. Justify your answer.



27. For  $f(x) = \sqrt[4]{x - 5}$  and  $g(x) = x^4 - 3$  find the functions AND state their domains.

(a)  $(f + g)(x)$

(b)  $(f \circ g)(x)$

(c)  $(g \circ f)(x)$